

2019/5 | NOVEMBER - JANUARY

Perfect Beauty

COSMETICS • NAILS • PEDICURE • SPA/MASSAGE

BESTSELLERS IN 2019

OUR FAVORITE PRODUCTS

.....

Christmas designs without red

TIPS FOR THE HOLIDAY SEASON

.....

NEW Nail Stickers

Elastic Gel

New iridescent colors

Cuticle Oil Marzipan

NEW CUTICLE-REVITALIZING OIL

.....

LacGel Effect Collections

New LACGEL PRODUCT RANGE

Sara Beauty Spa

MOISTURIZING AND PAMPERING

Perfect Day
WORLDWIDE

.....

Perfect Nail Prep

STEP BY STEP GUIDE FOR PERFECTION

PERFECT DAY

TRAINING FOR NAIL TECHNICIANS

Easy, quick, dazzling! 2019 FALL-WINTER

*Perfect Days and beauty exhibitions
are coming soon to your city as well!*

2019
UPCOMING
EVENTS

We present the latest innovations and techniques!

| | |
|------------------------------|---|
| 24 th of November | GRAZ – AUSTRIA |
| 30 th of November | MÜNCHEN – GERMANY (Perfect Day & Weihnacht Workshop) |
| 7 th of December | NÜRNBERG – GERMANY (Perfect Day & Weihnacht Workshop) |
| 7 th of December | RASTATT – GERMANY (Weihnacht Workshop) |
| 8 th of December | ANSBACH – GERMANY (Weihnacht Workshop) |
| 8 th of December | VIENNA – AUSTRIA |



PORTUGAL – LISBON



SLOVENIA – LJUBLJANA



SLOVENIA – LJUBLJANA



PORTUGAL – PORTO

Contents

| | |
|--|-------|
| Cashmere LacGel Effect Collection – Gel polish with cashmere-like finish - <i>New!</i> | 4-5 |
| Winter Wonderland LacGel Effect Collection – Glitter gel polish - <i>New!</i> | 6-7 |
| Elastic Gel – All-In-One builder gels - <i>New iridescent colors!</i> | 8 |
| Nail Stickers – Self-adhesive & water decals for nail art - <i>New designs!</i> | 9 |
| Tips for the Holiday Season – Christmas designs without red | 10-11 |
| Perfect Nail Prep – Step by step guide for perfect gel polish application | 12 |
| Cuticle Oil Marzipan – Marzipan-scented cuticle-revitalizing oil - <i>New!</i> | 13 |
| Sara Beauty Spa – Moisturizing and pampering in winter | 14-15 |
| Hyper Holo Chrome Powder – Color-changing holographic chrome powder | 16 |
| Perfect Pixie – Finely-milled glitter dust in various colors | 17 |
| Bestsellers – Our Favorites in 2019 | 18-19 |

*Helps managing your most
valuable asset: your time!*

2020 APPOINTMENT BOOK

A5-size planner with a padded, soft cover and a unique design. Appointments can be penciled for 6 am to 9 pm.

PNRE148



LIMITED
EDITION

Cashmere

LACGEL EFFECT COLLECTION

New

Let's transfer the warmth and cosiness of your favorite sweater to your nail designs in the holiday season. Our lovely winter pastel shades offer a faux fur effect to recall the fluffiness of a cashmere pullover.

FAUX FUR EFFECT

#006
MERINO



4 ml | PNZME006
8 ml | PNZNYE006

#007
MOHAIR



PNZME007
PNZNYE007

#008
FURNEO



PNZME008
PNZNYE008

#009
TWEED



PNZME009
PNZNYE009

#010
FLEECE



PNZME010
PNZNYE010

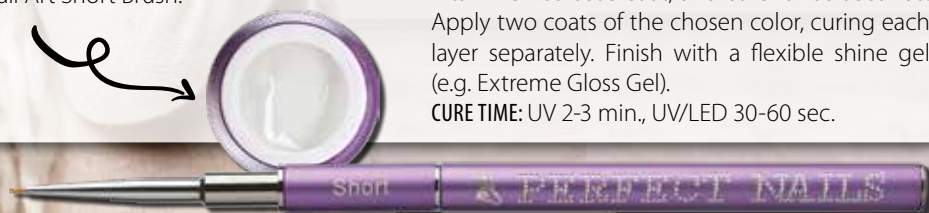
Perfect Tip

In order to emphasize the faux fur effect, create a pullover design with Delux Gel (e.g. #002 – white) using our Nail Art Short Brush.

HOW TO USE

After taking off the surface shine and prepping the natural nails, apply Perfect Prep, then Bond Gel Vitamine+ as base coat, and cure for 60 seconds. Apply two coats of the chosen color, curing each layer separately. Finish with a flexible shine gel (e.g. Extreme Gloss Gel).

CURE TIME: UV 2-3 min., UV/LED 30-60 sec.



Delux Gel #002 | PNZ2002

Nail Art Short Brush | PNED034

Faux fur on nails? Cosy pullover effect for your winter sets!



NAILS
Virág Lilla Tokár
MATERIALS USED
LacGel Effect #006, #009,
No Burn Gel, Delux Gel #002,
Extreme Gloss Gel



NAIL TIPS
Virág Lilla Tokár
MATERIALS USED
LacGel Effect #006, #007, #008, #009, #010, Liquid Stone
Gel - Clear, Delux Gel, Glue Gel, NailStar Strass, Micro
Pearl XS - Silver, Velvet Matt Gel, Extreme Gloss Gel

Save 10% when purchasing a set!



Cashmere LacGel Effect Collection kit | PNKG031

Winter Wonderland

LACGEL EFFECT COLLECTION

New

Once upon a time there was a beautiful snow fairy who scattered the finest magical glitter dust on nails. The sparkles of this fairy glitter reflected all the Christmas lights and made the holiday season even more special.

EXTRA
FINELY-MILLED
GLITTER

#001
MYSTERIOUS
WHITE



4 ml | PNZME001
8 ml | PNZNYE001

#002
LUXURY
ROSE



PNZME002
PNZNYE002

#003
MAGICAL
GOLD



PNZME003
PNZNYE003

#004
HYPNOTIC
SILVER



PNZME004
PNZNYE004

#005
CHARISMATIC
RED



PNZME005
PNZNYE005

Perfect Tip

You can do quick and easy designs with Cream Gel and to make these even more eye-catching, add Micro Pearl XS beads in Gold.

GOLD
MICRO PEARL XS



PNDD21

HOW TO USE

After taking off the surface shine and prepping the natural nails, apply Perfect Prep, then Bond Gel Vitamine+ as base coat, and cure for 60 seconds. Apply two coats of the chosen color, curing each layer separately. Finish with a flexible shine gel (e.g. Extreme Gloss Gel).

CURE TIME: UV 2-3 min., UV/LED 30-60 sec.

Winter is dull?
Add sparkle to
your designs!



NAILS

Virág Lilla Tokár

MATERIALS USED

AcrylGel Cover, LacGel Effect #001, #002, LacGel #182, Chrome Powder - White, Plastiline Gel - White, Color Acrylic Powder, Glue Gel, NailStar Strass, Micro Pearl XS, Extreme Gloss Gel



NAIL TIPS

Virág Lilla Tokár

MATERIALS USED

LacGel Effect #001, #002, #003, #004, #005, LacGel #182, Plastiline Gel - White, Delux Gel #031, Glue Gel, Micro Pearl XS - Gold, Velvet Matt Top Gel, Extreme Gloss Gel

Save 10% when purchasing a set!



Winter Wonderland LacGel Effect Collection kit | PNKG030



LIMITED
EDITION



Elastic Gel

ALL-IN-ONE BUILDER LAC GEL

New

Shiny-shimmery elegance?
Catches the eye but still sophisticated?
The new iridescent Elastic Gel colors
provide a toned down golden or silver shine
to make the holidays even more special.

COLD & WARM
SHADE
TO MATCH ALL
SKIN TONES

An iridescent twist on your
favorite nude shade!

NAILS
Évi Darabos
MATERIALS USED
Elastic Silver & Gold Shine Gel, Delux Gel #002,
Extreme Gloss Gel

HOW TO USE

After taking off the surface shine and prepping the natural nails, apply Perfect Prep Spray on hand surfaces and nails. Place the nail form according to the nail shape you are about to build. Apply a base layer of Elastic Gel, cure it halfway, then shape the apex and the C-curve and cure it completely. Cleanse the nail surfaces with Aroma Cleaner. Add a high shine top coat is optional (e.g. Extreme Gloss Gel).
CURE TIME: UV 1-2 min., UV/LED 60 sec.

Perfect Tip

Our white Delux Gel (#002) is ideal for French nails, and make sure to use our Nail art Long Brush for a smooth and precise application.



PNZ104 | 15 ml | PNZ105

Nail Art Long Brush | PNED036

Perfect Prep Spray | 100 ml | PNSA839

Nail Stickers

SELF-ADHESIVES & WATER DECALS FOR NAIL ART

New designs

Amazing designs for the winter and holiday season in a matter of seconds.
Our stickers and decals can be applied as accents or complete coverage.



MULTI-COLORED
SYMBOLS FOR
THE HOLIDAY
SEASON

Self-adhesive snowflakes with chrome effect!

HOW TO USE

When applying a decal, cut the chosen shape to size, then immerse it in water for 5 seconds. Take a dry paper towel, and remove the excess water by gently patting the surface of the decal. Then carefully remove the backing paper from the decal. Make sure to have a matte, dry and dusted-off nail surface before you apply and gently smooth out the decal or the self-adhesive (dry) sticker on it. Finish with a flexible shine gel (e.g. Extreme Gloss Gel).





Christmas designs without red

TIPS FOR THE HOLIDAY SEASON

Give red a break and choose from other amazing holiday shades. Surprise your clients with quick and clever nail art designs.

NAILS
Évi Darabos
MATERIALS USED
AcrylGel Cover, AcrylGel Clear, Delux Gel #018, Cream Gel - Silver, Delux Gel #002, Glitter - Dark Blue, Speed & Shine Top Gel

CHAMPAGNE FOR EVERYONE

Gold and silver Cream Gel nail art transforms everyday colors into festive holiday sets.

CREAM GEL

We can apply it on a matte surface or halfway cured no-cleanse shine gel (e.g. Extreme Gloss Gel).
CURE TIME: UV 3 min., UV/LED 60 sec.

When layers are needed, make sure to cure each one halfway!

CHAMPAGNE SILVER



PNPG12

PNPG13



NAIL TIPS
Virág Lilla Tokár
MATERIALS USED

LacGel #108, #109, #130, Perfect Pixie - Golden Shine, Cream Gel - Champagne, Velvet Matt Gel, Extreme Gloss Gel

*Move away from
ORDINARY & BECOME
extraordinary!*

VELVET MATT GEL

Apply a semi-thick layer after having cured the second coat of lacgel. Let the gel self-spread for 20 seconds before curing it under the lamp.
CURE TIME: UV 2 min., UV/LED 60 sec.



15 ml | PNZ6047

Check out our step by step videos on our website!

www.perfectnailscompany.com/product-videos

MIRROR CHROME WINTER MAGIC

Create shiny and sparkly nail designs fit for a fairy tale – use our nail art powders and nail jewels for a magical effect.

*Miracles are waiting
FOR YOU BEYOND
your comfort zone!*

TEAL DREAMS

Use our teal shades and our Cat Eye lacgels, and apply iridescent flakes on them.



ROSE GOLD
CHROME POWDER



PNP0088

BLUE
3D HOLO DROPS



PNDS1076

BLUE SHINE
MICA POWDER



NDMI02



4 ml | 8 ml

*Illusion that
meets the eye!*

LacGel #144, Cat Eye LacGel #009, #010, Cream Gel - White, Mica Powder - Blue Shine, Extreme Gloss Gel

NAIL TIPS
Virág Lilla Tokár
MATERIALS USED

Perfect Nail Prep

STEP BY STEP GUIDE FOR LACCGEL APPLICATION

The secret of perfect lacgel application is following an appropriate nail prep regimen.

Fail-safe prep steps!

1. lépés

Take off the surface shine of natural nails with a Supreme #180/180 nail file.



Supreme Nail File #180/180 | PNR0624

Step 2

Apply Perfect Prep Spray on a Nail Pads lint free wipe, and thoroughly cleanse the nail surfaces and the side walls in order to remove dust particles.

Prep Spray | PNSA839 | 100 ml | Nail Pads | 400 pcs/pack | PNSE304

Step 3

Apply a tiny amount of Acid Primer, then wait for it to dry completely.

Step 4

Apply Bond Gel Vitamine+ on the nail plate and the free edge, then cure it for 60 seconds.

15 ml | PNSA847

Step 5

Apply two coats of the chosen lacgel color, and cure each coat for 60 seconds under a UV/LED lamp. Finish with a flexible shine gel (e.g. Extreme Gloss Gel).

15 ml | PNZ050

Perfect Tip

If you combine manual prep and nail drill prep techniques, you can achieve an even cleaner surface around the side walls.

15 ml | PNZ6045



Cuticle Oil Marzipan

MARZIPAN-SCENTED NEW CUTICLE-REVITALIZING OIL

New

Revitalizing oil rich in almond and peach kernel oils to replenish the skin surrounding the nail plate and nourish the natural nails.

HOW TO USE

Apply a couple of drops onto the cuticle area and gently massage it to nourish and revitalize the skin around the nails. It also replenishes the natural nails when rubbed onto the nail plate.

Perfect Tip

After curing a no-cleanse top coat, make sure to only apply it on the skin surfaces surrounding the nails. If applied onto the nails, there is a risk of losing the high shine finish.

NEW

SWEET MARZIPAN SCENT



4 ml | PNSA849
15 ml | PNSA850

Calorie-free marzipan goodness!

Perfect holiday gift for your clients!





**Sara
Beauty
Spa**



ESSENTIAL CREAM GINGER & COCO

A moisturizing cream with a sweet and spicy scent, enriched with Vitamin E. Vitamin E has natural UV-blocking properties, protecting your skin cells and surface tissue from harmful rays. This product replenishes, moisturizes and nourishes the skin, leaving it silky smooth and revitalized. Suitable for all skin types and application on the whole body.

SBS079 | 250 ml

COLLAGEN CREAM VANILLA & JASMINE

Moisturizing cream with collagen and jasmine oil to facilitate skin regeneration. Nourishes and moisturizes to enhance skin firmness. Collagen slows down the natural aging process of the skin and regulates moisture content. Suitable for all skin types and application on the whole body.

SBS012 | 250 ml

SBS013 | 250 ml

COLLAGEN FACE CREAM SILK & JASMIN

Quick-absorbing, moisturizing and firming cream with collagen for a daily skincare routine. Jasmine oil and silk protein for a more effective skin regeneration process and to provide adequate moisturization. Suitable for all skin types and as a day and night cream.

SBS268 | 50 ml

MOISTURIZING DAY CREAM VITAMIN E & CHAMOMILE

Quick-absorbing, moisturizing and regenerating day cream with Vitamin E for a daily skincare routine. Regular use results in smoother and softer skin. Recommended for all skin types.

SBS265 | 50 ml

Give your loved ones some "me-time"!

One of the best gift ideas is a wellness and spa experience. Your loved ones will appreciate your loving care in the form of premium facial and body care products.



**Sara
Beauty
Spa**



VANILIA - JASMINE CARE

Collagen Cream – Vanilia & Jasmine 250 ml
Footh & Bath Salt – Vanilia & Jasmine 330 g

SBSKG001

STRAWBERRY - FOREST FRUIT FRESHNESS

Nourishing Cream – Forest Fruit 250 ml
Footh & Bath Salt – Strawberry 330 g

SBSKG003

CARIBBEAN CREAM COUPLE

Nourishing Cream – Coco 250 ml
Nourishing Cream – Tropical Fruits 250 ml

SBSKG002

MANGO – LAUENDER DREAM

Nourishing Cream – Mango & Lavender 250 ml
Footh & Bath Salt – Lavender 330 g

SBSKG004

Hyper Holo Chrome Powder

COLOR-CHANGING & HOLOGRAPHIC

Extra-finely milled, grain-free, rainbow-colored, mirror chrome powder.

HOW TO USE

Apply on halfway-cured, no-cleanse top coat (e.g. Speed & Shine Top Gel) with an ombre sponge. Start with applying the chrome powder by gently tapping it on the nail from the cuticle area up to the free edge. Then rub the applied powder layer on the nail to achieve the mirror effect. Finish with a flexible shine gel (e.g. Flexi Top Gloss).

Perfect Tip

After rubbing the chrome powder on the surface of the nail, two coats of flexible top coat can be applied to increase durability. Sealing the free edge with top coat minimizes chipping.

SEMI-TRANSPARENT



PNP0064

NAILS

Virág Buzás

MATERIALS USED

Color Top Cover Gel, Delux Gel #02

Hyper Holo Chrome Powder

Speed & Shine Top Gel

NAILSTAR STRASS

Achieve true holiday shine and brilliance with various sized and colored NailStar Strass nail jewels.

Brilliant jewels for nails!



NAIL TIP
Virág Lilla Tokár
MATERIALS USED
LacGel #046, #125, Delux Gel #001, #002, Glue Gel, NailStar Strass

AB CRYSTAL



CRYSTAL



LIGHT ROSE



ROSE



FUCHSIA



SIAM



AQUAMARINE



LIGHT TOPAZ



LIGHT PEACH



SUN



SS3 Ø 1,3–1,5 mm SS5 Ø 1,7–1,9 mm SS10 Ø 2,7–2,9 mm SS12 Ø 3–3,2 mm SS16 Ø 3,8–4 mm

PERFECT PIXIE

FINELY-MILLED GLITTER DUST

Suitable for use with gel polish, gel or acrylic. Apply on the nail surface for nail art or a sparkling sugar effect, or encapsulate it.

GOLDEN SHINE



PNPP07

ROYAL BLUE



PNPP10

HIGHLIGHT RED



PNPP08

DEEP PURPLE



PNPP09

HOW TO USE

Apply one coat of no-cleanse top gel (e.g. Speed & Shine Top Gel) and do not cure. Sprinkle Pixie dust on the nail surface, then cure completely.



NAILS

Évi Darabos

MATERIALS USED

LacGel #088, #125, #130, #134, #141, #148, Perfect Pixie

Perfect Tip

This product can be mixed into a clear gel (e.g. LacGel Base/Top) to get complete coverage even if applied in a thin layer and to create sparkling designs within layers or on the nail surface.

BESTSELLERS IN 2019

OUR FAVORITE PRODUCTS

The end of the year is approaching - it's time to look back and share our absolute favorites of 2019.

A STAR AMONG NAIL HARDENERS

Enjoy working on a perfectly prepped base, and provide even more durable nails for your clients.



PNZ090 | 15 ml | PNZ059

Push Up Manicure Drill Bit | PNG4073

BUILDER FAVORITES

We absolutely believe in time-efficient, well thought-out nail building that crowns the challenging salon work with success.

BLUSH

ROUGE



PNZ098 | 15 g | PNZ100
PNZ099 | 50 g | PNZ101



PNZ102 | 15 g | PNZ096
PNZ103 | 50 g | PNZ097



Gel Laquer Brush #6 | PNEZ028 AcrylGel Tip | 120 pcs/pack | PNTGY005

COLOR EXPLOSION OF LACGELS

Fabulous colored glass effect and multi-dimensional shades that quickly became client favorites.



5D MAGIC CAT EYE LACGEL COLLECTION

PNKG029



VITRAGE LACGEL GLASS COLLECTION

PNKG027



PUNCH & LOVE LACGEL PLUS COLLECTION

PNKG017

EXTREME SHINE OR A VELVETY MATTE FINISH

Matte or shiny top coats that guarantee a beautiful result.



PNZ6047 | 15 ml | PNZ6045

Perfect Nails at Beauty Exhibition



**BEAUTY
FORUM
MUNICH**

26-27 OCTOBER 2019.



Congratulations to
Perfect Nails
Bayern!



5 999056 054714

Graphic Designer Laura Máté

Some product images in the magazine are illustrations only.
We do not assume any liability for any printing errors.