



# PERFECT NAILS

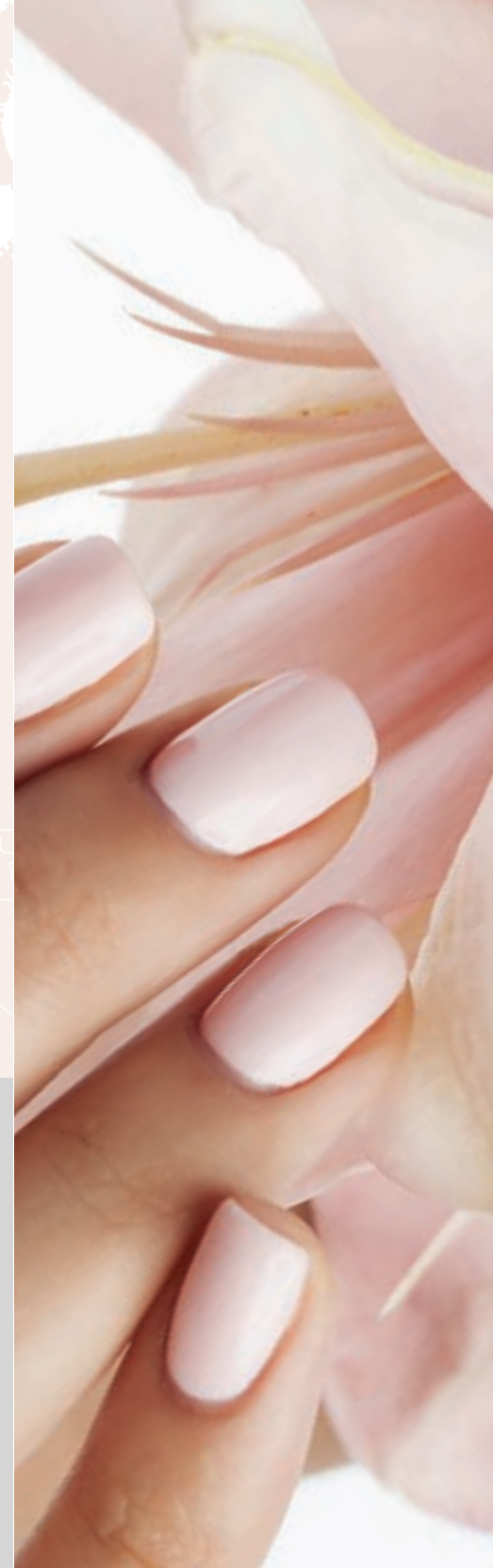
CATALOG 2022-2023



# Perfect Nails worldwide



Since 1992, our priority has been to provide nail technicians with the most perfect, **highest possible quality** products in every category. Today Perfect Nails is listed among the **most innovative** nail enhancement product ranges on the global professional market. We pride ourselves in our Perfect Nails family of top level nail technicians that has constantly expanded **for 30 years** now. **Our courses** and products aim to enable nail technicians to provide top quality services to their clients.



## Contents

■ Primers, Auxiliary Liquids, Removers .....	4-9
■ Nail Care, Top Coat, Nail Polish .....	10-13
■ Base & Top Gels .....	14-23
■ All-in-One Builder Gels .....	24-27
■ Color Gel Polish .....	28-39
■ Gel Polish Starter Kits .....	40-43
■ Builder Gels .....	44-59
■ Perfect AcrylGel, Prime .....	60-63
■ Nail Art & Color Gels .....	64-67
■ Acrylic Powders .....	68-73
■ Gel & Acrylic Kits .....	74-79
■ Nail Files .....	80-87
■ Builder & Nail Art Brushes .....	88-99
■ Tips & Nail Forms .....	100-103
■ Professional Metallic Tools & Accessories .....	104-109
■ Drill Bits & Sanding Bits .....	110-117
■ Electric Tools & Lamps .....	118-123
■ Stamping Accessories .....	124-129
■ Nail Art Supplies .....	130-145
■ Protective Gear .....	146-149
■ Salon Accessories & Tools .....	150-167



# PRIMERS, Auxiliary Liquids, Removers

## PURE NAIL

■ Liquid to prevent fungal infections

Special formula containing an anti-fungal agent, tolnaftate, to prevent nail fungus-related issues. Rub one or two drops into the skin folds and onto the nail plate. Helps in reattaching the lifted nail plate onto the nail bed.

4 ML PNSA826

15 ML PNSA818



## PERFECT CLEAN

■ Multifunctional cleaning liquid

Suitable for cleaning and degreasing nails and skin surfaces, removing the tacky layer as well as the cleaning of tools and surfaces. Displays a pleasant, slightly peachy scent.

100 ML SPRAY PNSA819

500 ML PNSA820

AVAILABLE  
IN SPRAY



## BRUSH CLEANER

■ Brush cleaning liquid

Removes any residue from the brushes.

30 ML PNSA804

100 ML PNSA805

250 ML PNSA806



## ACRYLGEL SOLUTION

■ Solution developed for AcrylGel

Perfectly suitable for working with AcrylGel, cleaning the brush and removing the tacky layer. Contains no fragrance and color additives, so it causes no discoloration in the AcrylGel.

**PLEASE NOTE:** Avoid overusing AcrylGel Solution as it may overthin the product, causing lifting and/or small bubbles.

100 ML PNZ4057



FOR ACRYLGEL  
SHAPING &  
CLEANSING

AVAILABLE  
IN SPRAY

## PERFECT PREP

### ■ Nail primer liquid

Liquid nail primer that prevents fungal infections, helps to achieve good adhesion, and also has water repellent and degreasing qualities. An acid-free product with a pH neutralizing effect, recommended for lacgel, gel, acrylic, and AcrylGel techniques. Its skin-friendly formula does not damage the nail plate.

**4 ML** PNSA825**100 ML** PNSA808**100 ML SPRAY** PNSA839**15 ML** PNSA006**250 ML** PNSA809**30 ML** PNSA807**500 ML** PNSA811

## PERFECT BOND PRIMER

### ■ Acid-free liquid adhesive film

Acid-free. Water repelling formula to prevent lifting and fungal infections. It forms a shiny and sticky layer on the natural nail surface. Highly recommended for problematic nails.

**4 ML** PNSA2003**15 ML** PNSA2002

## ACID PRIMER

### ■ Acid-based primer liquid

It contains acid and has a distinctive pungent smell, and removes most of the water- and fat-content of the natural nail plate to achieve even better adhesion. Let it dry completely, then apply Perfect Bond Primer or base gel (e.g. Bond Gel Vitamine+, Elastic Hard Gel). Highly recommended for clients with sweaty, clammy hands.

**CAUTION!** This product is corrosive, so avoid all skin contact. It should only be applied on the natural nail plate. Do not apply on nail enhancements. Please store at room temperature, as cool storage may cause crystallization.

**15 ML** PNSA847

## HYPER SHINE CLEANER

### ■ High shine gel cleanser

Its oil-based skin softening components with a refreshing tea scent nourish the cuticles. Always use this product as the finishing step, as the oil content may hinder the adhesion of any subsequent layer of gel or gel polish.

**100 ML** PNSA841

## AROMA CLEANER

### ■ Scented gel cleanser

Scented liquid to remove the tacky dispersion layer of cured gel, gel polish and AcrylGel from the nail surface, providing it with a long-lasting shine.

**STRAWBERRY****1 000 ML** PNSA822**CANDY****1 000 ML** PNSA840

BESTSELLER



## GEL CLEANER

### ■ Gel cleanser

Fragrance-free liquid to remove the tacky dispersion layer of cured gel, gel polish and AcrylGel from the nail surface.

**30 ML** PNSA801**500 ML** PNSA810**100 ML** PNSA802**250 ML** PNSA803





## LIQUID

■ Standard speed liquid

Compatible with any builder and color acrylic powder. A slight purple-bluish hue helps prevent yellowing and discoloration. Provides maximal adhesion. The perfect choice for both beginners and advanced users.

30 ML PNLQ020

100 ML PNLQ021

250 ML PNLQ022

500 ML PNLQ032



## INTENSIVE LIQUID

■ High speed liquid

Provides a color-enhancing effect; slight purple tone. The perfect choice for both beginners and advanced users. When used in combination with high speed acrylic powders, it provides even faster curing, making it the ideal choice for competitions.

30 ML PNLQ026

100 ML PNLQ027

250 ML PNLQ028

500 ML PNLQ033



TEMPERATURE-COMPENSATING  
PORCELAIN

## DAPPEN DISH – PORCELAIN

■ Dappen dish made of porcelain with a cork stopper

Liquid container with heat distributing double thickness walls preventing the premature setting of acrylic in warmer and a delayed setting in colder ambient temperatures. The container is corked for an odor-tight sealing. Easy to clean.

PC PNSE218

## ARTIFICIAL NAIL REMOVER

■ Particularly effective solvent

Solution for the quick removal of tips, acrylic nails and gel polish.

100 ML PNSA702

1 000 ML PNSA703



## LACGEL REMOVER

■ Gel polish remover solution

Special formula for the gentle and quick removal of the gel polish layer without drying the skin.

100 ML PNSA705

1 000 ML PNSA704



## NAIL POLISH REMOVER

■ Acetone-free nail polish remover

Recommended for removing traditional nail polish. Removes the nail polish in a gentle, nail-friendly way.

100 ML PNSA600

1 000 ML PNSA601



## REMOVER WRAP FOIL

■ Aluminium foil with cotton pad insert

Easily removes any type of gel polish and acrylic nails. The strong foil and the no-tear material prevent the evaporation of the solvent, allowing for a shorter application time.

100 PCS / PACK PNSE001



# NAIL CARE

## Top Coat, Nail Polish



### BASE COAT NAIL HARDENER

■ Nail hardener varnish with bamboo extract

Flexible nail care product with bamboo extract. Recommended for treating weakened natural nails upon the removal of gel polish and gel.

4 ML PNSA471

15 ML PNSA470



SHIELD  
FOR NAILS

### CUTICLE SOFTENER

■ Skin softener liquid

Light skin solvent to loosen up the dead skin layer for easier manual and machine manicure/ pedicure. Rinse off with soapy water after use.

4 ML PNSA837

15 ML PNSA838



### GLASS COAT

■ High shine, quick-dry top coat

Quick-dry top coat for nail polish, providing high gloss finish and scratch resistance. An anti-yellowing formula prevents the discoloration of the nail polish.

4 ML PNSA451

15 ML PNSA450



ROMANIA'S  
FAVORITE

### BASE & TOP COAT

■ Flexible base/top coat

Strengthens the nails and prevents discoloration. Used as a cover shine, it boosts the drying time of the nail polish, and provides it with a vivid, brilliant shine.

4 ML PNSA421

15 ML PNSA420





## GEL EFFECT NAIL POLISH

■ Gel-like nail polish range

More flexible than regular nail polish. This quick drying, durable, easy to apply nail polish provides perfect coverage in the first layer. Dries to an extra shiny surface, providing a gel polish effect on the nails. A base and a top coat is recommended.

**PERFECT TIP:** Before application, make sure to shake the nail polish bottle to release pigments from the bottom. **DRY TIME:** 3–5 minutes



7 ML PNSZL001-030



7 ML



7 ML



7 ML

ALSO  
AVAILABLE  
IN SETS



3 X 7 ML PNKL001



## HIGH SHINE GEL

■ High shine top coat for nail polish

Protects nail polish from scratches and abrasion caused by everyday use.

**DRY TIME:** 4 minutes

7 ML PNDNY028



## FX BASE GEL

■ Flexible, nail-strengthening base for nail polish

Provides outstanding adhesion between the nail plate and color nail polish.

**DRY TIME:** 2 minutes

7 ML PNDNY029

## CUTICLE OIL

■ Cuticle revitalizing oil

Rich in almond and peach kernel oil to nourish and treat the natural nail and the skin around the nail plate. Rub a few drops of this revitalizing oil into the cuticle area and around the nail contour, or apply it directly on the natural nail surface.



PINEAPPLE

4 ML PNSA823  
15 ML PNSA812



PEACH

4 ML PNSA824  
15 ML PNSA480



GRAPE

4 ML PNSA844  
15 ML PNSA843



STRAWBERRY

4 ML PNSA846  
15 ML PNSA845



MARZIPAN

4 ML PNSA849  
15 ML PNSA850



FLOWER  
FUSION

4 ML PNSA851  
15 ML PNSA852



# BASE AND

## Top Gels

### LACGEL BASE/TOP

Flexible base and shine top gel

Medium thick, flexible, soluble base and shine gel providing excellent adhesion. Apply the product on gel polish or on any type of nail enhancement as finishing cover shine. The layer will last and retain its gloss for weeks.

**CURE TIME:** UV 2–3 min., UV/LED 60–90 sec.

4 ML PNZM000

15 ML PNZ7017

THICKNESS	● ●
FLEXIBILITY	● ● ● ●
SOLUBILITY	● ●



NEW  
BOTTLE,  
X  
BRUSH

### BOND GEL VITAMINE+

Adhesion boosting, flexible base gel with vitamins

Thin, universal base gel to boost the adhesion of various nail enhancement materials, minimizing the chance of lifting from the natural nail surface. Forms a thinner and more readily soluble layer than the traditional bases, and also protects the nails. It provides rock solid adhesion even to problematic nail surfaces.

**HEAT PRODUCTION:** none | **CURE TIME:** UV 2–3 min., UV/LED 30–60 sec.

**PERFECT TIP:** For extremely problematic nails use the Hardener Gel after applying Bond Gel Vitamine+.

4 ML PNZ049

15 ML PNZ050

THICKNESS	●
FLEXIBILITY	● ● ● ● ● ●
SOLUBILITY	● ● ● ● ● ●



FOR  
PROBLEMATIC  
NAILS

### HARDENER GEL

Flexible base gel with nail hardening properties

Medium thick, soluble base gel with nail hardening properties. Flexible and bendable to easily follow the movement of the natural nails. Protects the natural nails from impact and damage. It smooths out uneven nail surfaces. Suitable for nail shape correction and fixing of slightly broken-off nail corners.

**PLEASE NOTE:** The product only allows a very short nail extension with the use of a nail form, as the highly flexible material only provides minimal support.

**HEAT PRODUCTION:** none | **CURE TIME:** UV 2–3 min., UV/LED 30–60 sec.

4 ML PNZ047

15 ML PNZ048

THICKNESS	● ● ●
FLEXIBILITY	● ● ● ●
SOLUBILITY	● ● ● ●







### NO CLEANSE TOP SHIELD

■ Slightly flexible, no-cleanser shine top gel

Medium thin, slightly flexible, soluble, non-yellowing shine gel requiring no cleansing. Apply the product in a normal thickness layer on sculpted nails and in an extra thin layer on nails strengthened with Hardener Gel/Elastic Hard Gel. Flexibility is only obtained when applied in a thin layer.

**CURE TIME:** UV 3–4 min., UV/LED 60–90 sec.

**ATTENTION:** Upon curing allow a 1 minute relax phase for the gel to retain its shine.

4 ML PNZ051

15 ML PNZ052

THICKNESS	● ●
FLEXIBILITY	● ●
SOLUBILITY	● ● ● ●



### FLEXI TOP GLOSS

■ Flexible shine top gel

Medium thick, soluble, flexible, high gloss shine gel with color-enhancing properties. Apply the product on gel polish or on any type of nail enhancement as finishing cover shine. The layer will last and retain its gloss for weeks. A slight bluish tint prevents yellowing and highlights the white nail tips. Requires cleansing after curing.

**CURE TIME:** UV 2–4 min., UV/LED 60–90 sec.

4 ML PNZ6039

15 ML PNZ6040

THICKNESS	● ● ●
FLEXIBILITY	● ● ● ●
SOLUBILITY	● ● ● ●



### TOP GEL

■ Non-flexible, no-cleanser shine top gels

Medium thin shine gel requiring no cleansing. Forms an extra strong and tough protective layer for a durable shine that will last for weeks. Rigid, only use on the surface of nail builder materials.

**CURE TIME:** UV 2–3 min., UV/LED 30–60 sec.

15 ML PNZ0002

THICKNESS	● ●
FLEXIBILITY	●
SOLUBILITY	●

### EXTREME GLOSS GEL

■ Flexible, no-cleanser shine top gel

Thick, flexible shine gel requiring no cleansing. Forget cobweb-cracks and yellowing of the nail surface with this beautiful glassy shine. Apply the product on gel polish or on any type of nail enhancement as finishing cover shine. The layer will last and retain its gloss for weeks.

**CURE TIME:** UV 2–3 min., UV/LED 120 sec.

8 ML PNZ6044

15 ML PNZ6045

THICKNESS	● ● ● ●
FLEXIBILITY	● ● ● ● ●
SOLUBILITY	●



### COOL SHINE EVER GEL

■ Flexible, no-cleanser shine top gel with UV protector formula

This is a medium thick, flexible shine gel with UV protector formula that creates a protective shield. Its purplish-blue hue neutralizes the yellowing effect of UV lights. Apply the product on gel polish or on any type of nail enhancement as a top gel. The durable layer will retain its gloss for weeks.

**CURE TIME:** UV 2–3 min., UV/LED 60–90 sec.

4 ML PNZ6050

15 ML PNZ6051

THICKNESS	● ●
FLEXIBILITY	● ● ● ● ●
SOLUBILITY	●



### SPEED & SHINE TOP GEL

■ Medium flexible, no-cleanser shine top gel

Medium thick, brilliant gloss shine gel requiring no cleansing. Apply the product on gel polish or on any type of nail enhancement as finishing cover shine. A particularly durable layer resistant to chemicals and solvents. The layer will last and retain its gloss for weeks.

**CURE TIME:** UV 1–3 min., UV/LED 30–60 sec.

**ATTENTION:** Allow a 1 minute relax phase upon curing for the gel to retain its gloss.

15 ML PNZ6041

THICKNESS	● ● ● ●
FLEXIBILITY	● ● ●
SOLUBILITY	●





### VELVET MATT EXTRA GEL

Flexible, no-cleanse extra matte top gel

Medium thick, flexible, no-cleanse top gel that creates an extra matte, velvety surface on any color without modifying the hue of the applied gel polish. The matte finish is long-lasting and does not become shiny with time. Apply the product on gel polish or on any type of nail enhancement as a top gel.

**CURE TIME:** UV 3 min., UV/LED 120 sec.

- 8 ML PNZ6048
- 15 ML PNZ6049

THICKNESS	● ● ●
FLEXIBILITY	● ● ● ● ●
SOLUBILITY	●



### NAIL ART TOP GEL

Flexible, surface filler shine top gel

Flexible, high-shine, thick consistency top gel – ideal choice for clear-capping nail art designs to achieve a perfectly smooth surface. It evens out gaps between nail art elements, ensuring their long-lasting adhesion.

**PERFECT TIP:** Wipe over the surface with dry cotton wool upon application for a beautiful gloss.

**CURE TIME:** UV 2–3 min., UV/LED 60–90 sec.

- 15 ML PNZ077

THICKNESS	● ● ● ●
FLEXIBILITY	● ● ● ●
SOLUBILITY	● ● ● ●



### GRANITE TOP GEL

Flexible, no-cleanse top gel that includes tiny black bits of various sizes and irregular shapes

Flexible, non-fixing topcoat and shine gel with black grains of different sizes and irregular shapes. Mini Top contains small and medium particles, Maxi Top contains larger particles. Matt Top contains small, medium and larger particles.

**PERFECT TIP:** Try combining the Mini and the Maxi top gel. Apply one coat of Maxi, cure for 10 seconds, then apply a coat of Mini on top.

**CURE TIME:** UV 2-3 min., UV/LED 60 sec.

- KIT PNKG073

#### CONTENTS

- 15 ML PNZ122 Granite Top Gel - Matt
- 15 ML PNZ123 Granite Top Gel - Mini
- 15 ML PNZ124 Granite Top Gel - Maxi

### MUST HAVE - BASE & TOP GEL COLLECTION

Base & Top Gel Collection

This simplifies the base and top gel selection process for your LAQ X gel polishes, since you can now work with products specifically designed for this range. This collection features two base gels with various thicknesses, and three different top gels.

**PERFECT TIP:** This product was specifically designed for protecting summer colors, so a slight bluish tint might be visible on certain dark colors of the fall/winter season.

**CURE TIME:** UV 2-3 min., UV/LED 60 sec.

- KIT 5x 8ml PNKG085

#### CONTENTS

- 8 ML PNZ128 Easy Base
- 8 ML PNZ6057 Massive Base
- 8 ML PNZ6058 Glossy Top
- 8 ML PNZ6055 Pixie Top
- 8 ML PNZ6056 Prisma Top



AVAILABLE IN SET AT A BETTER PRICE

### FLAKES EFFECT TOP GEL COLLECTION

Flexible, no-cleanse top gels in a set, offering the trendiest effects.

The collection features 4 varieties of top shine and 1 matte top gel. The magical effects are conjured by reflective gold and silver flakes, as well as white snowflakes. The shiny versions of black and white dots trending on Instagram and the matte versions of hexagons are also included in this set!

**CURE TIME:** UV 2-3 min., UV/LED 60 sec.

- KIT 5x 8ml PNKG086

#### CONTENTS

- 8 ML PNZ130 Golden Flakes
- 8 ML PNZ129 Silver Flakes
- 8 ML PNZ132 White Flakes
- 8 ML PNZ131 Hexa Flakes
- 8 ML PNZ133 Square Flakes Matt



AVAILABLE IN SET AT A BETTER PRICE



BASE AND BUILDER GELS – COMPARISON TABLE

WHAT TO USE TOGETHER AND HOW

PRODUCT NAME	PRODUCT FEATURES	USE	PRODUCT COMBINATION	COLOR	COVERAGE	CONSISTENCY		FLEXIBILITY	CURE TYPE	CURE TIME	CLEANSSED SURFACE	SURFACE WHEN CURED, STICKINESS	CLEANSING	HEAT PRODUCTION	SOLUBILITY	SOAK-OFF TIME	DURABILITY
Bond Gel Vitamine+	base gel with vitamins	nail preparation (dry manicure) + Perfect Prep	LacGel, LacGel Plus, Hardener Gel, Elastic Hard Gel, LacGel Base/Top, Premium Gel, LacGel Effect, LacGel Cat Eye, LacGel LaQ X	transparent, water clear	✖	●		●●●●●	UV, UV/LED	2-3 min., 30-60 sec.	●	✓	✖	●	●●●●●	5-8 min.	2 weeks
Hardener Gel	base gel suitable for nail correction	nail preparation (dry manicure) + Perfect Prep	LacGel, LacGel Plus, LacGel Base/Top, LacGel Effect, LacGel Cat Eye, LacGel LaQ X	transparent, slight purple tone	✖	●●●		●●●●	UV, UV/LED	2-3 min., 30-60 sec.	●	✓	✖	●	●●●●	8-15 min.	3-4 weeks
Elastic Hard Gel	brush-applicable base & builder gel	nail preparation (dry manicure) + Perfect Prep	LacGel, LacGel Plus, LacGel Glass, LacGel Effect, LacGel Cat Eye, LacGel LaQ X	transparent, water clear	✖	●●●●		●●●	UV, UV/LED	2-3 min., 30-60 sec.	●●●	✓	✖	●●	●●●●	8-15 min.	3-4 weeks
Elastic Gel	all-in-one base, builder & nail bed extension gel	nail preparation (dry manicure) + Perfect Prep	LacGel, LacGel Plus, LacGel Effect, LacGel Cat Eye, LacGel LaQ X	various tones	✓	●●●		●●●	UV, UV/LED	2-3 min., 30-60 sec.	●●●	✓	✖	●●	●●●●	8-15 min.	3-4 weeks
Fiber Gel Vitamin	all-in-one base and builder gel with glass fibers	nail preparation (dry manicure) + Perfect Prep	LacGel, LacGel Plus, LacGel Effect, LacGel Cat Eye, LacGel LaQ X	various tones	✓	●●●●		●●●	UV, UV/LED	2-3 min., 30-60 sec.	●●●	✓	✖	●●	●●●●	8-15 min.	3-4 weeks
Easy Base	thin base layer for natural-looking gel polishing	nail preparation (dry manicure) + Perfect Prep	LacGel, LacGel Plus, Hardener Gel, Elastic Hard Gel, LacGel Base/Top, Premium Gel, LacGel Effect, LacGel Cat Eye, LacGel LaQ X	transparent, water clear	✖	●		●●●●●	UV, UV/LED	2-3 min., 30-60 sec.	●	✓	✖	●	●●●●●	5-8 min.	2 weeks
Massive Base	brush-applicable base & builder gel	nail preparation (dry manicure) + Perfect Prep	LacGel, LacGel Plus, LacGel Effect, LacGel Cat Eye, LacGel LaQ X	transparent, water clear	✖	●●●●●		●●●	UV, UV/LED	2-3 min., 30-60 sec.	●●●	✓	✖	●●	●●●●	8-15 min.	3-4 weeks

CONSISTENCY

● thin | ●● medium thin | ●●● medium thick | ●●●● thick | ●●●●● very thick

FLEXIBILITY

● rigid | ●● slightly flexible | ●●● medium flexible | ●●●● flexible | ●●●●● highly flexible

SOLUBILITY

● non-soluble | ●● low solubility | ●●● medium solubility | ●●●● soluble | ●●●●● good solubility

CLEANSSED SURFACE

● matte | ●● slight gloss | ●●● medium gloss | ●●●● gloss | ●●●●● brilliant gloss

HEAT PRODUCTION

● none | ●● slight | ●●● medium | ●●●● high | ●●●●● very high

TOP GELS – COMPARISON TABLE

WHAT TO USE TOGETHER AND HOW

PRODUCT NAME	PRODUCT FEATURES	USE	PRODUCT COMBINATION	COLOR	CONSISTENCY		FLEXIBILITY	CURE TYPE	CURE TIME	CLEANSED SURFACE	SURFACE WHEN CURED, STICKINESS	CLEANSING	HEAT PRODUCTION	SOLUBILITY	SOAK-OFF TIME	DURABILITY
No Cleanse Top Shield	no-cleanse shine top gel	apply on filed and dust-free surface in a normal thickness layer or, on gel polish colors, in a thin layer	strengthening + gel polish, any type of nail enhancement	transparent, water clear, slight purple tone	●●		●●	UV, UV/LED	3-4 min., 60-90 sec.	●●●●	✕	✕	●●	●●●●	8-15 min.	2-3 weeks
Flexi Top Gloss	color-enhancing top shine gel	apply on filed and dust-free surface of gel polish colors, in a normal thickness layer	any gel polish, any type of nail enhancement	transparent, water clear, slight blue tone	●●●		●●●●	UV, UV/LED	2-4 min., 60-90 sec.	●●●●●	✓	✓	●●	●●●●	8-15 min.	2-3 weeks
Speed & Shine Top Gel	quick curing shine top gel	apply on filed and dust-free surface in a normal thickness layer or, on gel polish colors, in a thin layer	strengthening + gel polish, any type of nail enhancement	transparent, water clear	●●●		●●●	UV, UV/LED	1-3 min., 30-60 sec.	●●●●●	✕	✕	●●	●	-	2-3 weeks
Extreme Gloss Gel	extremely high shine top gel	apply on filed and dust-free surface of gel polish colors, in a thin thickness layer	any gel polish, any type of nail enhancement	transparent, water clear	●●●●		●●●●●	UV, UV/LED	2-3 min., 120 sec.	●●●●●	✕	✕	●●	●	-	3-4 weeks
Cool Shine Ever Gel	shine top gel with UV protector formula and glistening water effect	apply on filed and dust-free surface of gel polish colors, in a normal thickness layer	any gel polish, any type of nail enhancement	transparent, water clear, slight purple tone	●●		●●●●●	UV, UV/LED	2-3 min., 60-90 sec.	●●●●●	✕	✕	●●	●	-	4-5 weeks
LacGel Base/Top	flexible base and shine top gel	as a base: nail preparation + Perfect Prep, as a cover: apply on filed and dust-free surface of gel polish colors	as a base: any gel polish; as a cover: LacGel, LacGel Plus, LacGel Rapid, Hardener Gel, Elastic Gels	transparent, water clear	●●		●●●●	UV, UV/LED	2-3 min., 60-90 sec.	●●●●	✓	base ✕ top ✓	●●	●●	8-15 min.	3-4 weeks
Velvet Matt Extra Gel	velvety, extra matte top gel	apply on filed and dust-free surface of gel polish colors, in a normal thickness layer	any gel polish, any type of nail enhancement	transparent, water clear	●●●		●●●●●	UV, UV/LED	3 min., 120 sec.	●	✕	✕	●	●	-	3-4 weeks
Top Gel	non-flexible shine top gel	apply on filed and dust-free surface in a thin thickness layer	rigid builder acrylic, gel	transparent, water clear	●●		●	UV, UV/LED	2-3 min., 60-90 sec.	●●●●●	✕	✕	●●	●	-	2-3 weeks
Nail Art Top Gel	shine top gel with surface filling properties	apply on filed and dust-free surface of gel polish colors	any gel polish, any type of nail enhancement	transparent, water clear	●●●●		●●●●	UV, UV/LED	2-3 min., 60-90 sec.	●●●●●	✓	✓	●	●●●●	8-15 min.	2-3 weeks
Glossy Top	crystal clear high shine, UV protector formula	apply on filed and dust-free surface in a thin thickness layer	any gel polish, any type of nail enhancement	transparent, crystal clear	●●●		●●●●	UV, UV/LED	2-3 min., 60-90 sec.	●●●●●	✕	✕	●●	●	-	3-4 weeks
Effect Top Gels	matte and glossy top gel enriched with different effects	apply on filed and dust-free surface in a thin thickness layer	any gel polish, any type of nail enhancement	with different size particles and mica	●●		●●●●	UV, UV/LED	2-3 min., 60-90 sec.	shiny ●●●● matte ●	✕	✕	shiny ●●●● matte ●●	●	-	3-4 weeks

- CONSISTENCY
- thin | ●● medium thin | ●●● medium thick | ●●●● thick | ●●●●● very thick
- FLEXIBILITY
- rigid | ●● slightly flexible | ●●● medium flexible | ●●●● flexible | ●●●●● highly flexible
- SOLUBILITY
- non-soluble | ●● low solubility | ●●● medium solubility | ●●●● soluble | ●●●●● good solubility

- CLEANSED SURFACE
- matte | ●● slight gloss | ●●● medium gloss | ●●●● gloss | ●●●●● brilliant gloss
- HEAT PRODUCTION
- none | ●● slight | ●●● medium | ●●●● high | ●●●●● very high



# ALL-IN-ONE

## Builder Gels



## Elastic Gels

■ All-in-one base and builder gel in a bottle

Suitable as base gel to strengthen the nails before gel polish application, as well as for corrections, nail sculpting and creating an apex.

### ELASTIC HARD GEL

■ Clear, self-spreading, brush-applicable base and builder gel with surface filling properties

Thick and strong like a builder gel, yet flexible like gel polish. Suitable as base gel to strengthen the nails before gel polish application, as well as for nail hardening/correction, nail sculpting and creating an apex. It protects the natural nails from impact and mechanical damage. This gel spreads completely and offers surface filling properties, also ideal for the no-filing technique. Flexible and bendable, but will not deform. It offers high stability and adhesion; requires no primer, and retains shine after cleansing.

**HEAT PRODUCTION:** slight | **CURE TIME:** UV 2–3 min., UV/LED 30–60 sec.

4 ML PNZ060

15 ML PNZ059

3 X 15 ML PNKG100

THICKNESS



FLEXIBILITY



SOLUBILITY



**NAILS:**  
Évi Darabos

NAIL  
TECHNICIANS'  
FAVORITE



## ELASTIC GEL

■ All-in-one base, builder and extension gel in a bottle

Suitable as a thin base gel to strengthen the nails before gel polish application, as well as for nail hardening/correction, nail sculpting and creating an apex. Protects the natural nails from impact and mechanical damage. Perfect for nude nails or French nails with a slight extension. This gel spreads completely and offers surface filling properties, also ideal for the no-filing technique. It offers high stability and adhesion; requires no primer, and retains shine after cleansing.

**HEAT PRODUCTION:** slight | **CURE TIME:** UV 2–3 min., UV/LED 30–60 sec.

15 ML

THICKNESS	● ● ● ●
FLEXIBILITY	● ● ●
SOLUBILITY	● ● ● ●

SILVER SHINE  
ELASTIC GEL



PNZ104

GOLD SHINE  
ELASTIC GEL



PNZ105

PINK SHINE  
ELASTIC GEL



PNZ116

MILKY PINK  
ELASTIC GEL



PNZ093

MILKY WHITE  
ELASTIC GEL



PNZ125

NEW

COVER ROSE  
ELASTIC GEL



PNZ094

COVER PINK  
ELASTIC GEL



PNZ088

COVER NUDE  
ELASTIC GEL



PNZ087

COVER BLUSH  
ELASTIC GEL



PNZ118

COVER BLOSSOM  
ELASTIC GEL



PNZ119

COVER TAN  
ELASTIC GEL



PNZ117



AVAILABLE  
IN SET AT A  
BETTER  
PRICE

KIT

PNKG055

AVAILABLE  
IN SET AT A  
BETTER  
PRICE

## BABYBOOMER - ELASTIC GEL COLLECTION

■ All-in-one builder gels for a perfect Baby Boomer design

**PERFECT TIP:** We highly recommend our Ombre brush in order to achieve a perfect blend of colors.

KIT

PNKG035

### CONTENTS

- 15 ML Elastic Gel - Cover Pink
- 15 ML Fiber Gel Vitamin - Latte
- 15 ML Elastic Gel - Milky Pink

COVER PINK  
ELASTIC GEL



PNZ088

LATTE  
FIBER GEL VITAMIN



PNZ090

MILKY PINK  
ELASTIC GEL



PNZ093



# Fiber Gel Vitamin

■ All-in-one base and builder gel with glass fibers

Suitable as base gel to strengthen the nails before gel polish application, as well as for corrections, nail sculpting and creating an apex.

## FIBER GEL VITAMIN

■ All-in-one base, builder and extension gel with glass fibers

Thick and strong like a builder gel, yet flexible like gel polish. Suitable as base gel to strengthen the nails before gel polish application, as well as for corrections, nail sculpting, extension and creating an apex. This gel spreads perfectly and it evens out the surface; it is also ideal for the no-filing technique. The fiber glass in the gel provides high stability and a solid base suitable for building longer nails (up to 5mm). Retains shine after cleansing. Requires no primer.

**HEAT PRODUCTION:** slight | **CURE TIME:** UV 2–3 min., UV/LED 30–60 sec.

15 ML PNZ090

THICKNESS	● ● ● ●
FLEXIBILITY	● ● ●
SOLUBILITY	● ● ● ●

WHITE SHINE  
FIBER GEL VITAMIN



PNZ113

NUDE SHINE  
FIBER GEL VITAMIN



PNZ112

CLEAR  
FIBER GEL VITAMIN



PNZ120

PINK  
FIBER GEL VITAMIN



PNZ107

LATTE  
FIBER GEL VITAMIN



PNZ090



## COVER PINK SHADES - FIBER GEL VITAMIN COLLECTION

■ All-in-one extension gels with glass fibers for a French nail

KIT

PNKG054

### CONTENTS

- 15 ML Fiber Gel Vitamin - Rose Quartz
- 15 ML Fiber Gel Vitamin - Candy
- 15 ML Fiber Gel Vitamin - Baby Pink

ROSE QUARTZ  
FIBER GEL VITAMIN



PNZ111

CANDY  
FIBER GEL VITAMIN



PNZ114

BABY PINK  
FIBER GEL VITAMIN



PNZ115



AVAILABLE  
IN SET AT A  
BETTER  
PRICE



COLOR

Gel Polish

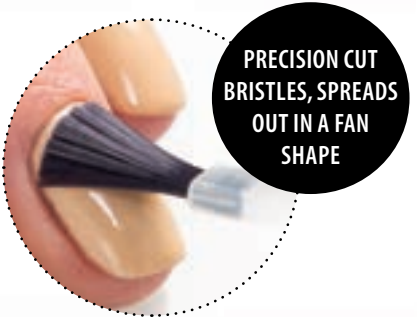


# LacGel LaQ X Effect

■ LaQ X gel polish with glitter and other particles in three steps  
„X” for an extra color experience! This means up to 30% more pigmented colors and creamier consistency, our X gel polishes will help you perfect your gel polishing technique. Seductive, hot, intense colors.  
**CURE TIME:** UV 2–3 min., UV/LED 60 sec.  
**PERFECT TIP:** Stir the gel polish with a spatula, or shake the bottle thoroughly before use to ensure an even distribution of pigment.

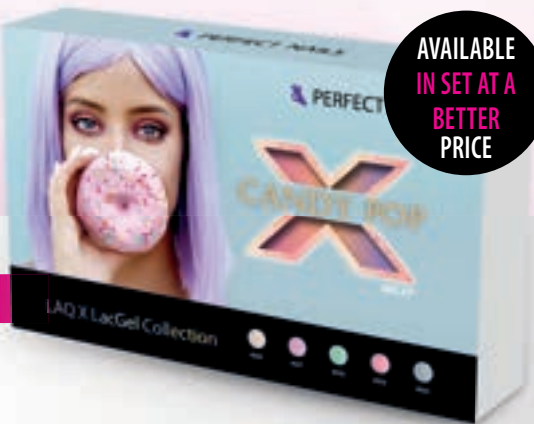
8 ML PNZXNY046-070

THICKNESS	● ● ●
FLEXIBILITY	● ● ● ●
SOLUBILITY	● ● ● ● ●



CANDY POP LAQ X GEL POLISH COLLECTION

5X8 ML PNKG087







# LacGel LaQ X

■ Up to 30% more pigmented gel polish colors in three steps

„X” for an extra color experience! This means up to 30% more pigmented colors and creamier consistency, our X gel polishes will help you perfect your gel polishing technique. Seductive, hot, intense colors.

**CURE TIME:** UV 2–3 min., UV/LED 60 sec.

**PERFECT TIP:** Stir the gel polish with a spatula, or shake the bottle thoroughly before use to ensure an even distribution of pigment.

8 ML PNZXNY001-082

THICKNESS	● ● ●
FLEXIBILITY	● ● ● ●
SOLUBILITY	● ● ● ● ●



ART LAQ X GEL POLISH COLLECTION

5X8 ML PNKG088



AVAILABLE  
IN SET AT A  
BETTER  
PRICE

## BLACK & WHITE GEL POLISH COLLECTION

■ The perfect black and white LaQ X gel polishes in one collection

„X” for extra color intensity! These colors have an extra, even 30% pigmentation, and the consistency is so X-tremely creamy that you can fine-tune your application technique to perfection. We keep on surprising you with our newest collections that feature even more seductive, fabulous and intensive colors.

KIT PNKG097



CHERRY BLOSSOM LAQ X GEL POLISH COLLECTION

5X8 ML PNKG093



AVAILABLE  
IN SET AT A  
BETTER  
PRICE



# LacGel

Highly durable gel polish colors in three steps

Softly spreading gel polish with excellent adhesion – a transition between color gels and nail polish. No scratching, abrasion and flaking for up to 3 weeks. Requires base and top gel. A flexible top gel is recommended as a finishing touch. It can be soaked off with acetone.

**CURE TIME:** UV 2–3 min., UV/LED 60 sec.

**PERFECT TIP:** Stir the gel polish with a spatula, or shake the bottle thoroughly before use to ensure an even distribution of pigment.

4 ML PNZM001-222

8 ML PNZNY001-222

THICKNESS	● ●
FLEXIBILITY	● ● ● ●
SOLUBILITY	● ● ● ● ●



CREAMY GEL POLISH COLLECTION

5X8 ML PNKG080



AVAILABLE  
IN SET AT A  
BETTER  
PRICE

MORE THAN  
100  
COLORS



TROPICAL CHAOS GEL POLISH COLLECTION

5X8 ML PNKG094



AVAILABLE  
IN SET AT A  
BETTER  
PRICE





# LacGel Plus

■ Highly pigmented gel polish colors in three steps

A thicker gel polish of creamier texture and a higher pigment concentration, which will provide perfect coverage in as little as one layer. It spreads more readily and cures to shinier than traditional gel polish. Requires base and top gel. The surface cures to slightly shiny; a flexible top gel is recommended as a finishing touch. It can be soaked off with acetone.

**CURE TIME:** UV 2–3 min., UV/LED 60 sec.

**PERFECT TIP:** Stir the gel polish with a spatula, or shake the bottle thoroughly before use to ensure an even distribution of pigment.

- 4 ML PNZMP01-128
- 8 ML PNZNY8001-128

THICKNESS	● ● ●
FLEXIBILITY	● ● ● ●
SOLUBILITY	● ● ● ● ●



- 4 ML PNZMP01-128
- 8 ML PNZNY8001-128



CUPCAKE LACGEL PLUS GEL POLISH COLLECTION

5X8 ML PNKG034



WITH X BOTTLE & X BRUSH

AVAILABLE IN SET AT A BETTER PRICE



NEARLY 100 COLORS



DOLCE GELATO LACGEL PLUS GEL POLISH COLLECTION

5X8 ML PNKG038



WITH X BOTTLE & X BRUSH

AVAILABLE IN SET AT A BETTER PRICE





# LacGel Effect

■ Gel polish with glitter and other particles in three steps

Use as standalone gel polish or apply as second layer on any gel polish color. It requires base and top gels and cures to moderately shiny, with a flexible top gel recommended as a finishing touch. It can be soaked off with acetone.

**CURE TIME:** UV 2–3 min., UV/LED 60 sec.

**PERFECT TIP:** Stir the gel polish with a spatula, or shake the bottle thoroughly before use to ensure an even distribution of glitter particles.

- 4 ML PNZME001-025
- 8 ML PNZNYE001-025

THICKNESS	● ● ●
FLEXIBILITY	● ● ● ●
SOLUBILITY	● ● ● ● ●



PINK DIAMOND LACGEL EFFECT GEL POLISH COLLECTION

5X8 ML PNKG067



AVAILABLE  
IN SET AT A  
BETTER  
PRICE

# LacGel Cat Eye

■ Magnetizable gel polish colors with cat's eye prismatic effect

For the cat eye effect hold a magnet over the painted surface for a few seconds; start curing when the desired prismatic effect occurs. Without magnetizing, this product serves as regular gel polish. Requires base and top gel. A flexible top gel is recommended as a finishing touch. It can be soaked off with acetone.

**CURE TIME:** UV 2–3 min., UV/LED 60 sec.

**PERFECT TIP:** Stir the gel polish with a spatula, or shake the bottle thoroughly before use, for a consistent pigment concentration throughout. Please use a black base before applying 9D Cat Eye lacgels.

- 4 ML PNZMC001-25
- 8 ML PNZNY9001-025



THICKNESS	● ● ●
FLEXIBILITY	● ● ● ●
SOLUBILITY	● ● ● ● ●



## CAT EYE LACGEL MAGNET – BLACK

■ Double-sided magnet for extra-pigmented magnetizable gel polish

The marked end of the magnet pulls the color grains together, whereas the unmarked end of the magnet spreads the particles. You can create a circle and several other shapes with this special magnet. This magnet is specifically recommended for 9D Cat Eye LacGels.

PC PNSE708



VELVET CAT EYE GEL POLISH COLLECTION

5X8 ML PNKG082



NEW  
AVAILABLE  
IN SET AT A  
BETTER  
PRICE

COLOR GEL POLISH – COMPARISON TABLE

WHAT TO USE TOGETHER AND HOW

PRODUCT NAME	PRODUCT FEATURES	USE	BASE GEL COMBINATION	TOP GEL COMBINATION	DURABILITY	CONSISTENCY		APPLICATION / LEVEL OF COVERAGE	FLEXIBILITY	CURE TYPE	CURE TIME	SURFACE WHEN CURED, STICKINESS	CLEANSING	CLEANSED SURFACE	TOP GEL	SOLUBILITY	SOAK-OFF TIME
LacGel	three-step gel polish	three-step lacgel	Bond Gel Vitamine+, Hardener Gel, Elastic Gel, Fiber Gel Vitamin, LacGel Base/Top	Cool Shine Ever Top Gel, No Cleanse Top Shield, Extreme Gloss Gel, Velvet Matt Extra Gel, Flexi Top Gloss, LacGel Base/Top	3-4 weeks	●●		two normal layers	●●●●	UV, UV/LED	2-3 min., 60 sec.	✓	✗	●	✓	●●●●●	file off top layer + 10-20 min.
LacGel Plus	thicker and more pigmented three-step gel polish	nail preparation (dry manicure) + Perfect Prep + base gel + color + top gel	Bond Gel Vitamine+, Hardener Gel, Elastic Gel, Fiber Gel Vitamin, LacGel Base/Top	Cool Shine Ever Top Gel, No Cleanse Top Shield, Extreme Gloss Gel, Velvet Matt Extra Gel, Flexi Top Gloss, LacGel Base/Top	3-4 weeks	●●●		one - two normal layers	●●●●	UV, UV/LED	2-3 min., 60 sec.	✓	✗	●●	✓	●●●●●	file off top layer + 10-20 min.
LacGel Glass	transparent, three-step gel polish with a colored glass effect	nail preparation (dry manicure) + Perfect Prep + base gel + color + top gel	Bond Gel Vitamine+, Hardener Gel, Elastic Gel, Fiber Gel Vitamin, LacGel Base/Top	Cool Shine Ever Top Gel, No Cleanse Top Shield, Extreme Gloss Gel, Velvet Matt Extra Gel, Flexi Top Gloss, LacGel Base/Top	3-4 weeks	●●		one - two normal layers	●●●●	UV, UV/LED	2-3 min., 60 sec.	✓	✗	●●●	✓	●●●●●	file off top layer + 10-20 min.
LacGel Effect	three-step gel polish with glitter, velvet fibers and other particles	nail preparation (dry manicure) + Perfect Prep + base gel + color + top gel	Bond Gel Vitamine+, Hardener Gel, Elastic Gel, Fiber Gel Vitamin, LacGel Base/Top	Cool Shine Ever Top Gel, No Cleanse Top Shield, Extreme Gloss Gel, Velvet Matt Extra Gel, Flexi Top Gloss, LacGel Base/Top	3-4 weeks	●●●		one - two normal layers	●●●●	UV, UV/LED	2-3 min., 60 sec.	✓	✗	●●●	✓	●●●●●	file off top layer + 10-20 min.
LacGel Cat Eye	magnetic, three-step gel polish with a cateye effect	nail preparation (dry manicure) + Perfect Prep + base gel + color + top gel	Bond Gel Vitamine+, Hardener Gel, Elastic Gel, Fiber Gel Vitamin, LacGel Base/Top	Cool Shine Ever Top Gel, No Cleanse Top Shield, Extreme Gloss Gel, Velvet Matt Extra Gel, Flexi Top Gloss, LacGel Base/Top	3-4 weeks	●●●		two normal layers	●●●●	UV, UV/LED	2-3 min., 60 sec.	✓	✗	●	✓	●●●●●	file off top layer + 10-20 min.
LacGel LaQ X	extra pigmented, creamy three-step gel polish	nail preparation (dry manicure) + Perfect Prep + base gel + color + top gel	Bond Gel Vitamine+, Hardener Gel, Elastic Gel, Fiber Gel Vitamin, LacGel Base/Top	Cool Shine Ever Top Gel, No Cleanse Top Shield, Extreme Gloss Gel, Velvet Matt Extra Gel, Flexi Top Gloss, LacGel Base/Top	3-4 weeks	●●●		one - two thin layers	●●●●	UV, UV/LED	2-3 min., 60 sec.	✓	✗	●●●	✓	●●●●●	file off top layer + 10-20 min.
LacGel LaQ X Effect	extra pigmented, creamy three-step gel polish, with glitter and some special effect	nail preparation (dry manicure) + Perfect Prep + base gel + color + top gel	Bond Gel Vitamine+, Hardener Gel, Elastic Gel, Fiber Gel Vitamin, LacGel Base/Top	Cool Shine Ever Top Gel, No Cleanse Top Shield, Extreme Gloss Gel, Velvet Matt Extra Gel, Flexi Top Gloss, LacGel Base/Top	3-4 weeks	●●●		one - two thin layers	●●●●	UV, UV/LED	2-3 min., 60 sec.	✓	✗	●●●	✓	●●●●●	file off top layer + 10-20 min.

- CONSISTENCY

● thin | ●● medium thin | ●●● medium thick | ●●●● thick | ●●●●● very thick
- FLEXIBILITY

● rigid | ●● slightly flexible | ●●● medium flexible | ●●●● flexible | ●●●●● highly flexible

- CLEANSED SURFACE

● matte | ●● slight gloss | ●●● medium gloss | ●●●● high gloss | ●●●●● brilliant gloss
- SOLUBILITY

● non-soluble | ●● low solubility | ●●● medium solubility | ●●●● soluble | ●●●●● good solubility



# GEL POLISH

## Starter Kits



## For Gel Polish Application

■ Recommended for trainees or as a trial set for Perfect Nails products

These kits are ideal for manicure and gel polish application. A complimentary technical card is included for reference to ensure the correct order of product application.



### MINI KIT

■ For gel polish application

**CONTENTS** **KIT** PNKG041

**4 ML** Perfect Prep **4 ML** LacGel Base/Top **20 ML** Gel Cleaner **4 ML** LacGel #007  
**1 PC** Orange Wood Stick **1 PC** White Buffer **100 PCS** Premium Nail Wipes



### MINI MOUSE KIT

■ For gel polish application with a UV/LED lamp (containing 6 LEDs)

**CONTENTS** **KIT** PNKG048

**4 ML** Perfect Prep **4 ML** LacGel Base/Top **20 ML** Gel Cleaner **4 ML** LacGel #007  
**1 PC** Orange Wood Stick **1 PC** White Buffer **100 PCS** Premium Nail Wipes  
**1 PC** Mouse Gelpolish UV/LED Lamp



### PRO KIT

■ For gel polish application with a UV/LED lamp (containing 21 LEDs)

**CONTENTS** **KIT** PNKG043

**4 ML** Perfect Prep **4 ML** LacGel Base/Top **20 ML** Gel Cleaner **4 ML** LacGel #007  
**1 PC** Orange Wood Stick **1 PC** White Buffer **100 PCS** Premium Nail Wipes  
**1 PC** Smart Universal UV/LED Lamp



### UNICORN PRO KIT

■ For gel polish application with a UV/LED lamp (containing 30 LEDs)

**CONTENTS** **KIT** PNKG045

**4 ML** Perfect Prep **4 ML** LacGel Base/Top **20 ML** Gel Cleaner **4 ML** LacGel #007  
**1 PC** Orange Wood Stick **1 PC** White Buffer **100 PCS** Premium Nail Wipes  
**1 PC** Unicorn Pink UV/LED Lamp



AVAILABLE  
IN SET AT A  
BETTER  
PRICE



# For Nail-Strengthening

■ Recommended for trainees or as a trial set for Perfect Nails products

These kits are ideal for manicure and strengthening the nails with Elastic Hard Gel before gel polish application. A complimentary technical card is included for reference to ensure the correct order of product application.



## MAXI KIT

■ For nail-strengthening and gel polish application

### CONTENTS

**KIT** PNKG042

**4 ML** Perfect Prep **4 ML** LacGel Base/Top **20 ML** Gel Cleaner **4 ML** LacGel #007  
**4 ML** LacGel #151 **4 ML** Cuticle Softener **4 ML** Elastic Hard Gel **1 PC** White Buffer  
**1 PC** Orange Wood Stick **1 PC** Pusher & Scraper - Flat **100 PCS** Premium Nail Wipes



AVAILABLE  
IN SET AT A  
BETTER  
PRICE

## MAXI MOUSE KIT

■ For nail-strengthening and gel polish application with a UV/LED lamp (containing 6 LEDs)

### CONTENTS

**KIT** PNKG049

**4 ML** Perfect Prep **4 ML** LacGel Base/Top **20 ML** Gel Cleaner **4 ML** LacGel #007  
**4 ML** LacGel #151 **4 ML** Cuticle Softener **4 ML** Elastic Hard Gel **1 PC** White Buffer  
**1 PC** Orange Wood Stick **1 PC** Pusher & Scraper - Flat **100 PCS** Premium Nail Wipes  
**1 PC** Mouse Gelpolish UV/LED Lamp



## PRO PLUS KIT

■ For nail-strengthening and gel polish application with a UV/LED lamp (containing 21 LEDs)

### CONTENTS

**KIT** PNKG044

**4 ML** Perfect Prep **4 ML** LacGel Base/Top **20 ML** Gel Cleaner **4 ML** LacGel #007  
**4 ML** LacGel #151 **4 ML** Cuticle Softener **4 ML** Elastic Hard Gel **1 PC** White Buffer  
**1 PC** LacGel Waterproof Nail File - Fine/Medium **1 PC** Orange Wood Stick  
**1 PC** Pusher & Scraper - Mani **100 PCS** Premium Nail Wipes  
**1 PC** Smart Universal UV/LED Lamp

## UNICORN PRO PLUS KIT

■ For nail-strengthening and gel polish application with a UV/LED lamp (containing 30 LEDs)

### CONTENTS

**KIT** PNKG046

**4 ML** Perfect Prep **4 ML** LacGel Base/Top **20 ML** Gel Cleaner **4 ML** LacGel #007  
**4 ML** LacGel #151 **4 ML** Cuticle Softener **4 ML** Elastic Hard Gel **1 PC** White Buffer  
**1 PC** LacGel Waterproof Nail File - Fine/Medium **1 PC** Orange Wood Stick  
**1 PC** Pusher & Scraper - Mani **100 PCS** Premium Nail Wipes  
**1 PC** Unicorn Silver UV/LED Lamp



AVAILABLE  
IN SET AT A  
BETTER  
PRICE

## MEGA PACK KIT

■ For nail-strengthening and gel polish application with a UV/LED lamp (containing 36 LEDs)

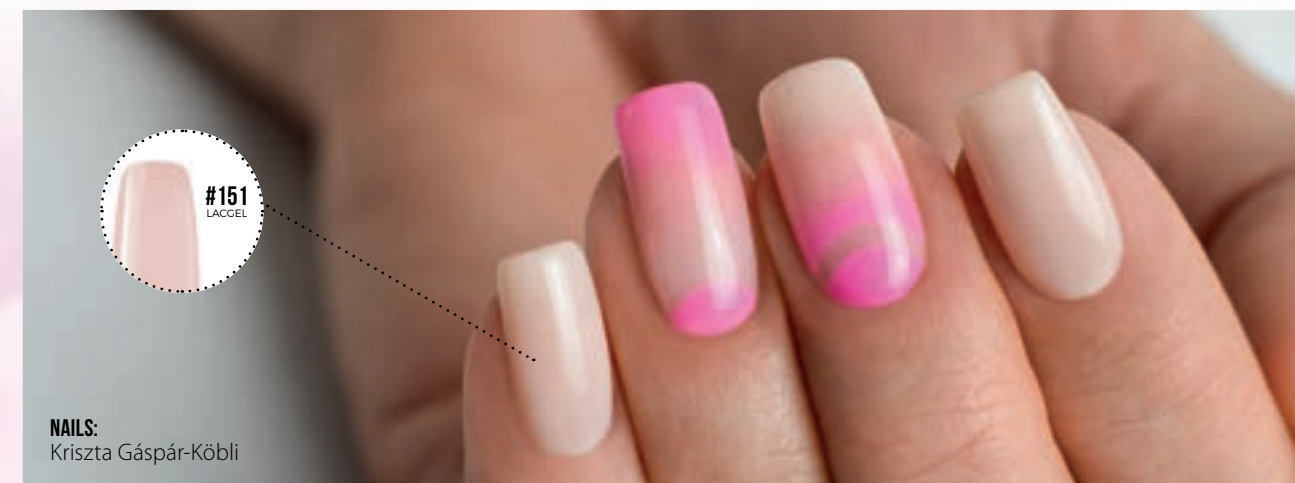
### CONTENTS

**KIT** PNKG047

**4 ML** Perfect Prep **4 ML** LacGel Base/Top **20 ML** Gel Cleaner **4 ML** LacGel #007  
**4 ML** LacGel #151 **4 ML** Cuticle Softener **4 ML** Elastic Hard Gel **1 PC** White Buffer  
**1 PC** LacGel Waterproof Nail File - Fine/Medium **1 PC** Orange Wood Stick  
**1 PC** Pusher & Scraper - Flat **100 PCS** Premium Nail Wipes  
**1 PC** Moonlight Plus Universal UV/LED Lamp



AVAILABLE  
IN SET AT A  
BETTER  
PRICE



NAILS:  
Kriszta Gáspár-Köbli



# BUILDER

## Gels



## Cool Protein Gels

NEW

■ Builder & Cover Gels

### COOL PROTEIN GEL - CLEAR NAIL BUILDER GEL

■ Medium thick, transparent builder gel with almost no burning sensation

Creamy consistency, easy application, spreads readily without smearing, retains shape. Slightly flexible, bends well, and retains the apex. Crystal clear, contains no pigments, won't yellow. Cures without producing heat; retains shine after cleansing.

**PHASE:** single-phase | **HEAT PRODUCTION:** almost none | **CURE TIME:** UV 3 min., UV/LED 60 sec.



15 G PNZ126

50 G PNZ127

THICKNESS ● ● ●

FLEXIBILITY ● ● ●



### COOL PROTEIN GEL - NAIL BUILDER PINK GEL

■ Medium thick builder gel with almost no burning sensation

Creamy consistency, easy application, spreads readily without smearing, retains shape. Slightly flexible, bends well, and retains the apex. Crystal clear, contains no pigments, won't yellow. Cures without producing heat; retains shine after cleansing.

**PHASE:** single-phase | **HEAT PRODUCTION:** almost none | **CURE TIME:** UV 3 min., UV/LED 60 sec.



15 G PNZ138

50 G PNZ139

Nude Cover

15 G PNZ136

50 G PNZ137

Pinky Cover

15 G PNZ134

50 G PNZ135

Natural Cover





# White Gels

White builder gels

White Builder Gels

Builder Gels



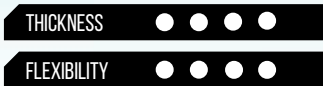
## EXTREME WHITE GEL

Medium thick, extremely white, self-spreading builder gel

Allows for a perfectly smooth and level surface, offers outstanding shape retention. Recommended for working on the French free edge. Allows creating a clear-cut, contoured smile-line. A clear base gel is needed before applying this white multiphase gel. Requires cleansing at the end of the process.

**PHASE:** multiphase | **HEAT PRODUCTION:** slight | **CURE TIME:** UV 2–3 min., UV/LED 60–90 sec.

15 G PNZ4023



## WHITE BABE GEL

Medium thin white gel providing slight coverage

Provides steady adhesion on the natural nails, without a separate base layer. Ideal for natural-looking nail enhancements. A slightly translucent white tone for easier gradients. Requires cleansing at the end of the process.

**PHASE:** single-phase | **HEAT PRODUCTION:** high | **CURE TIME:** UV 2–3 min., UV/LED 60–90 sec.

15 G PNZ061



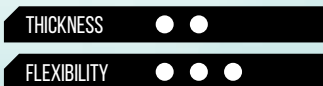
## FIBER REFILL GEL

Milky-white, medium thick, color-enhancing builder gel with glass fibers

The thinner consistency allows for quicker and easier application. Due to its self-leveling and the short cure time, you can cut the infill time in half. Glass fibers boost adhesion and durability, while preventing the product from flooding the side walls. It is ideal for infills and the no-filing technique. It offers high stability and adhesion and requires no primer. The surface should be cleansed after curing.

**PHASE:** single-phase | **HEAT PRODUCTION:** slight | **CURE TIME:** UV 2–3 min., UV/LED 60–90 sec.

15 G PNZ109



# Clear Gels

Clear builder gels

## PREMIUM GEL

Color-enhancing, medium thin, self-leveling builder gel

The product's purplish tone enhances colors. This highly flexible and bendable product retains the C-curve and it is easy to file. Due to its flexibility, it may only be used with flexible top gel. The surface should be cleansed after curing.

**PERFECT TIP:** Its outstanding flexibility makes this product highly suitable for strengthening natural nails or the slight extension of nails (size XS: 0.5–1 mm).

**PHASE:** single-phase | **HEAT PRODUCTION:** minimal | **CURE TIME:** UV 2 min., UV/LED 60 sec.

15 G PNZ042

50 G PNZ044



## NO BURN GEL

Medium thick, transparent builder gel with almost no burning sensation

Creamy consistency, easy application, spreads readily without smearing, retains shape. Slightly flexible, bends well, and retains the C-curve. Crystal clear, contains no pigments, won't yellow. Cures without producing heat; retains shine after cleansing.

**PHASE:** single-phase | **HEAT PRODUCTION:** almost none | **CURE TIME:** UV 3 min., UV/LED 60 sec.

15 G PNZ102

50 G PNZ103



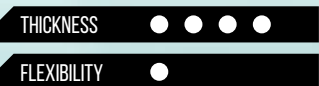
## ACTIVE CLEAR GEL

Very thick builder gel of creamy texture and violet tone

Provides steady adhesion to the natural nails, without a separate base layer. Perfectly suitable for extreme nail shapes and bending. Requires cleansing after curing.

**PHASE:** single-phase | **HEAT PRODUCTION:** high | **CURE TIME:** UV 2–3 min., UV/LED 60 sec.

15 G PNZ4038



Clear Builder Gels

Builder Gels





WHITENING  
EFFECT

### EXTREME WHITENING GEL

■ Medium thick and transparent builder gel with whitening properties

Slight purple tone, with UV filtering and optical color-enhancing properties. Provides steady adhesion on the natural nails, without a separate base layer. Thick, still readily shaped; spreads perfectly without smearing. Slightly flexible, bends well, and retains the C-curve. Low dust production when filed. Requires cleansing after curing.

**PHASE:** single-phase | **HEAT PRODUCTION:** slight | **CURE TIME:** UV 3 min., UV/LED 60 sec.

15 G PNZ096

50 G PNZ097

THICKNESS ● ● ●

FLEXIBILITY ● ●



NO.1  
BUILDER GEL

### PLATINUM GEL

■ Medium thick, builder gel of platinum shine

Creates a durable, resistant and solid surface, it is easy to shape and spreads perfectly without smearing. The product is bendable and retains the C-curve. Low dust production when filed. The surface should be cleansed after curing.

**PERFECT TIP:** Recommended for strengthening and medium (size M: approx. 1 cm) extension of nails. Readily mixes with pigment powders and other decorative materials.

**PHASE:** single-phase | **HEAT PRODUCTION:** minimal | **CURE TIME:** UV 2 min. UV/LED 60 sec.

15 G PNZ038

50 G PNZ040

THICKNESS ● ● ●

FLEXIBILITY ● ● ● ●



THE KING  
OF UNIQUE  
SHAPES

COLOR-  
ENHANCING  
PROPERTIES

### ICE GEL

■ Thick and softly spreading builder gel with color-enhancing effect

Color-enhancing properties due to the bluish tone. Beyond the standard nail shapes this product is also suitable for sculpting extra long nails & extreme nail shapes, as it won't smear. Remains shiny after cleansing.

**PERFECT TIP:** Recommended for salon nails and size L (1.5–2 cm) nail extensions.

**PHASE:** single-phase | **HEAT PRODUCTION:** high | **CURE TIME:** UV 2–3 min., UV/LED 60 sec.

15 G PNZ4035

50 G PNZ4037

THICKNESS ● ● ● ●

FLEXIBILITY ●

### CRYSTAL CLEAR GEL

■ Crystal clear thick, yet easily spreading builder gel

Provides steady adhesion to the natural nails, without a separate base layer. An easy-to-handle consistency makes it perfect for thin base layers and C-curves; won't smear. Recommended for both beginners and professionals. Requires cleansing after curing.

**PERFECT TIP:** Recommended for salon nails and size L (1.5–2 cm) nail extensions.

**PHASE:** single-phase | **HEAT PRODUCTION:** high | **CURE TIME:** UV 2–3 min., UV/LED 60 sec.

15 G PNZ4031

50 G PNZ4033

THICKNESS ● ● ● ●

FLEXIBILITY ●



CRYSTAL  
CLEAR

### ELASTIC REFILL GEL

■ Clear, medium thin, self-leveling builder gel

The thinner consistency allows for quicker and easier application. Due to its self-leveling and the short cure time, you can cut the infill time in half. It is ideal for infills and the no-filing technique. It offers high stability and adhesion and requires no primer. The surface should be cleansed after curing.

**PHASE:** single-phase | **HEAT PRODUCTION:** slight | **CURE TIME:** UV 2–3 min., UV/LED 30–60 sec.

15 G PNZ121

THICKNESS ● ●

FLEXIBILITY ● ● ● ●



NAILS:  
Évi Darabos

# Pink Gels

■ Pink builder gels



FOR  
BABY BOOMER  
TECHNIQUE

## PINK BABE GEL

■ Very thick, baby pink gel providing slight coverage

Ideal for creating natural-looking nail enhancements, the Baby Boomer design or as a filler for French nail enhancements. The transparency of this product allows for creating the gradient effect with only a few strokes. Holds the C-curve perfectly, which makes it ideal for creating extreme shapes. Requires cleansing at the end of the process.

**PHASE:** single-phase | **HEAT PRODUCTION:** high | **CURE TIME:** UV 2–3 min., UV/LED 60–90 sec.

15 G PNZ073

50 G PNZ075

THICKNESS	● ● ● ● ●
FLEXIBILITY	● ●



## ACTIVE PINK GEL

■ Very thick, glassy pink builder gel

It boosts and intensifies the nail bed color. Bendable and won't smear, making it highly suitable for nail bed extension and creating extreme nail shapes. Requires cleansing at the end of the process.

**PERFECT TIP:** Recommended for experienced nail technicians.

**PHASE:** single-phase | **HEAT PRODUCTION:** high | **CURE TIME:** UV 2–3 min., UV/LED 60–90 sec.

15 G PNZ6005

50 G PNZ6007

THICKNESS	● ● ● ● ●
FLEXIBILITY	●



FOR  
ROSE QUARTZ  
TECHNIQUE

## CREAM PINK GEL

■ Medium thick, Barbie pink builder & nail bed extension gel

It is equally suitable for sculpting nails and creating surface designs. This product is ideal for an exquisite French manicure effect. It provides excellent adhesion to the natural nails, so there is no need for a base layer. The surface should be cleansed after curing. It is recommended for the rose quartz technique.

**PERFECT TIP:** Suitable for building nails up to size L.

**PHASE:** single-phase | **HEAT PRODUCTION:** minimal | **CURE TIME:** UV 2–3 min., UV/LED 60–90 sec.

15 G PNZ6002

THICKNESS	● ●
FLEXIBILITY	● ●

# Cover Gels

■ Nail bed extension gels

## BUILD & FILL COVER ROUGE GEL

■ Medium thick, darker tone builder & nail bed extension gel

The darker tone highlights the white French tip. Ideal for filing the smile line when sculpting a French nail, and suitable for infills as well. Self-spreading, yet retains shape. Provides good coverage in a thicker layer and a nice gradient in a thinner layer. Requires cleansing at the end of the process.

**PHASE:** single-phase | **HEAT PRODUCTION:** slight | **CURE TIME:** UV 2–3 min., UV/LED 60–90 sec.

15 G PNZ100

50 G PNZ101

THICKNESS	● ●
FLEXIBILITY	● ●



## BUILD & FILL COVER BLUSH GEL

■ Thick, lighter tone builder & nail bed extension gel

The perfect choice for lighter skin tones. Ideal for filing the smile line when sculpting a French nail, and suitable for infills as well. Self-spreading, yet retains shape. Provides good coverage in a thicker layer and a nice gradient in a thinner layer. Requires cleansing at the end of the process.

**PHASE:** single-phase | **HEAT PRODUCTION:** slight | **CURE TIME:** UV 2–3 min., UV/LED 60–90 sec.

15 G PNZ098

50 G PNZ099

THICKNESS	● ● ●
FLEXIBILITY	● ●



## COVER GEL

■ Highly pigmented, natural pink nail bed extension gel

The warm tone goes well with the natural color of the nail, and covers up any imperfections. The smile line will show no grow-out. Even one thin layer provides good, spotless coverage. Requires cleansing at the end of the process.

**PHASE:** single-phase | **HEAT PRODUCTION:** minimal | **CURE TIME:** UV 2–3 min., UV/LED 60–90 sec.

15 G PNZ6016

50 G PNZ6021

THICKNESS	● ● ●
FLEXIBILITY	● ●



NAIL  
TECHNICIANS'  
FAVORITE





COVER EXTRA GEL

Very thick, highly pigmented nail bed extension gel of darker tone

Ideal for building the appropriate nail structure for a French nail. The ultra light texture allows for a one-step shaping of the smile line. Not self-leveling, therefore retains the created shape even in the hottest temperatures. Requires cleansing at the end of the process.

PHASE: single-phase | HEAT PRODUCTION: high | CURE TIME: UV 2–3 min., UV/LED 60–90 sec.

15 G PNZ070

50 G PNZ072

THICKNESS ● ● ● ● ●

FLEXIBILITY ● ●



COVER NUDE GEL

Highly pigmented, medium thick, nail bed extension gel of nude tone

Creamy texture, easy to handle. Spreads readily, and won't smear, suitable for creating natural gradients. Provides steady adhesion on the natural nails, without a separate base layer. The color goes well with the natural tone of the nail, and covers up any imperfections. The smile line will show no grow-out. Requires cleansing at the end of the process.

PERFECT TIP: Perfect choice for both competitions and salon work.

PHASE: single-phase | HEAT PRODUCTION: minimal | CURE TIME: UV 2–3 min., UV/LED 60–90 sec.

15 G PNZ064

50 G PNZ066

THICKNESS ● ●

FLEXIBILITY ● ●



FOR  
BABY BOOMER  
TECHNIQUE

COVER BABE GEL

Very thick, peachy pink nail bed extension gel

Ideal for creating natural-looking nail enhancements, the Baby Boomer technique or as a filler for French nails. Slightly transparent, so the gradient can be created with a few movements. Requires cleansing at the end of the process.

PHASE: single-phase | HEAT PRODUCTION: high | CURE TIME: UV 2–3 min., UV/LED 60–90 sec.

15 G PNZ067

50 G PNZ069

THICKNESS ● ● ● ● ●

FLEXIBILITY ● ●

COVER PEACH GEL

Medium thick nail bed extension gel of lighter peach tone

Requires a clear base layer and a cover layer of Clear gel. Covers the imperfections of the natural nail perfectly. Extremely easy to apply and handle. The smile-line remains free of any grow-out. Requires cleansing at the end of the process.

PHASE: multiphase | HEAT PRODUCTION: minimal | CURE TIME: UV 2–3 min., UV/LED 60–90 sec.

15 G PNZ6018

THICKNESS ● ● ●

FLEXIBILITY ● ●



COVER SILVER SHINE GEL

Nail bed extension gel with a pearly-silver shine

This multiphase gel offers good coverage. A clear base coat is needed before application, and the product should be clear-capped with gel.

PHASE: multiphase | HEAT PRODUCTION: medium | CURE TIME: UV 2–3 min., UV/LED 60–90 sec.

15 G PNZ6013

THICKNESS ● ● ●

FLEXIBILITY ● ●



PEARLY  
SILVER SHINE

COVER GOLD SHINE GEL

Nail bed extension gel with a pearly-gold shine

This multiphase gel offers good coverage. A clear base coat is needed before application, and the product should be clear-capped with gel.

PHASE: multiphase | HEAT PRODUCTION: medium | CURE TIME: UV 2–3 min., UV/LED 60–90 sec.

15 G PNZ6015

THICKNESS ● ● ●

FLEXIBILITY ● ●



PEARLY  
GOLD SHINE

# Basic Gels

Basic builder gels



### BASIC BLUE GEL

Builder gel of bluish tone, with color-enhancing properties

Suitable for base layers and C-curves. Requires cleansing after curing. Recommended for both beginners and experienced nail technicians.

**PHASE:** single-phase | **HEAT PRODUCTION:** minimal | **CURE TIME:** UV 2–4 min., UV/LED 60–90 sec.

15 GPNZ6037

50 GPNZ6038

THICKNESS●●●

FLEXIBILITY●



### BASIC WHITE GEL

Natural white builder gel

Even one thin layer provides good, spotless coverage. A clear base coat is needed before applying this white multiphase gel. Requires cleansing after curing.

**PERFECT TIP:** Due to the high pigment content, this product is best applied in a thin layer, and longer cure time should be allowed.

**PHASE:** multiphase | **HEAT PRODUCTION:** minimal | **CURE TIME:** UV 2–4 min., UV/LED 60–90 sec.

15 GPNZ6053

THICKNESS●●●

FLEXIBILITY●



### BASIC COVER DARK GEL

Dark toned nail bed extension gel

A thin layer of this gel already provides good, spotless coverage. A clear base coat is needed before application, and the product should be clear-capped with gel. The surface should be cleansed after curing. Recommended for lighter skin tones.

**PERFECT TIP:** Gently stir the product with a spatula before use. Since the product is highly pigmented, it should be applied in a thinner layer and allow a longer cure time.

**PHASE:** multiphase | **HEAT PRODUCTION:** minimal | **CURE TIME:** UV 2–4 min., UV/LED 60–90 sec.

15 GPNZ6054

THICKNESS●●●

FLEXIBILITY●

# Basic Gel Kit

Basic builder gels for creating nail extensions

Medium thick, self-leveling gel range that offers perfect adhesion to the natural nail. Further characteristics include easy application, low heat production, easy filing and reduced dust production. These products are suitable for the tip-gel technique, sculpting and infills as well.

**HEAT PRODUCTION:** minimal | **CURE TIME:** UV 2–4 min., UV/LED 60–90 sec.

KITPNKG064

THICKNESS●●●

FLEXIBILITY●

## CONTENTS

- 15 G Basic Blue Gel
- 15 G Basic White Gel
- 15 G Basic Cover Dark Gel



NAILS:  
Abigél Krupa



BUILDER GELS – COMPARISON TABLE

WHAT TO USE TOGETHER AND HOW

PRODUCT NAME	PRODUCT FEATURES	USE	PRODUCT COMBINATION	COLOR	COVERAGE		CONSISTENCY	FLEXIBILITY	NAIL HARDENING	NAIL EXTENSION	BENDABLE	PHASE	CURE TYPE	CURE TIME	HEAT PRODUCTION	CLEANSE
Cool Protein Gel	protein-containing builder gel with minimal heat generation	nail preparation (dry manicure) + Perfect Prep + Perfect Bond Primer	Bond Gel Vitamine+, Cover Gels, Extreme White Gel, Top Gels, gel polish	various tones	varies		●●●	●●●	✓	L	✓	single	UV, UV/LED	3 min., 60 sec.	●	✓
Basic Gels	builder & nail extension gels for tip-gel techniques, building and infill	nail preparation (dry manicure) + Perfect Prep + Perfect Bond Primer	Bond Gel Vitamine+, Cover Gels, Extreme White Gel, Top Gels, gel polish	various tones	varies		●●●	●	✓	S	✗	Blue: single White, Cover: multi	UV, UV/LED	2–4 min., 60–90 sec.	●●	✓
Premium Gel	builder gel with color-enhancing properties	nail preparation (dry manicure) + Perfect Prep + Perfect Bond Primer	Bond Gel Vitamine+, Cover Gels, Extreme White Gel, Flexi Top Gloss, Extreme Gloss Gel, Cool Shine Ever Gel, Velvet Matt Extra Gel, gel polish	transparent, water clear, purplish tone	✗		●●	●●●●●	✓	XS	✓	single	UV, UV/LED	2 min., 60 sec.	●●	✓
Platinum Gel	builder gel with platinum shine	nail preparation (dry manicure) + Perfect Prep + Perfect Bond Primer	Bond Gel Vitamine+, Cover Gels, Extreme White Gel, Top Gels, gel polish	transparent, water clear, slight purple tone	✗		●●●	●●●●	✓	M	✓	single	UV, UV/LED	2 min., 60 sec.	●●	✓
Extreme Whitening Gel	builder gel with whitening effect and optical color-enhancing properties	nail preparation (dry manicure) + Perfect Prep + Perfect Bond Primer	Bond Gel Vitamine+, Cover Gels, Extreme White Gel, Top Gels, gel polish	transparent, slight purple tone	✗		●●●	●●	✓	L	✓	single	UV, UV/LED	3 min., 60 sec.	●●●	✓
No Burn Gel	builder gel with almost no burning sensation	nail preparation (dry manicure) + Perfect Prep + Perfect Bond Primer	Bond Gel Vitamine+, Cover Gels, Extreme White Gel, Top Gel-ek, gel polish	transparent, water clear	✗		●●●	●●	✓	L	✓	single	UV, UV/LED	3 min., 60 sec.	●	✓
Ice Gel	builder gel with color-enhancing properties, for extreme nais	nail preparation (dry manicure) + Perfect Prep + Perfect Bond Primer	Bond Gel Vitamine+, Cover Gels, Extreme White Gel, Top Gel-ek, gel polish	slightly bluish	✗		●●●●	●	✓	L	✓	single	UV, UV/LED	2–3 min., 60 sec.	●●●●●	✓
Active Clear Gel	builder gel for creating extreme shapes	nail preparation (dry manicure) + Perfect Prep + Perfect Bond Primer	Bond Gel Vitamine+, Cover Gels, Extreme White Gel, Top Gel-ek, gel polish	transparent, violet tone	✗		●●●●	●	✓	L	✓	single	UV, UV/LED	2–3 min., 60 sec.	●●●●●	✓
Crystal Clear Gel	builder gel for creating size L nails	nail preparation (dry manicure) + Perfect Prep + Perfect Bond Primer	Bond Gel Vitamine+, Cover Gels, Extreme White Gel, Top Gels, gel polish	transparent, crystal clear	✗		●●●●	●	✓	L	✓	single	UV, UV/LED	2–3 min., 60 sec.	●●●●●	✓
Elastic Refill Gel	clear, self-leveling builder gel	nail preparation (dry manicure) + Perfect Prep	Flexi Top Gloss, Speed & Shine Top Gel, Extreme Gloss Gel, Cool Shine Ever Gel, Velvet Matt Extra Gel, gel polish	transparent, water clear	✗		●●●●	●●●	✓	S-M	✗	single	UV, UV/LED	2–3 min., 60 sec.	●●●	✓
Fiber Refill Gel	milky white builder gel with glass fibers	nail preparation (dry manicure) + Perfect Prep	Flexi Top Gloss, Speed & Shine Top Gel, Extreme Gloss Gel, Cool Shine Ever Gel, Velvet Matt Extra Gel, gel polish	milky pink	✓		●●●	●●●	✓	M	✓	single	UV, UV/LED	2–3 min., 60 sec.	●●●	✓

CONSISTENCY

● thin | ●● medium thin | ●●● medium thick | ●●●● thick | ●●●●● very thick

FLEXIBILITY

● rigid | ●● slightly flexible | ●●● medium flexible | ●●●● flexible | ●●●●● highly flexible

HEAT PRODUCTION

● almost none | ●● minimal | ●●● slight | ●●●● medium | ●●●●● high

BUILDER GELS – COMPARISON TABLE

WHAT TO USE TOGETHER AND HOW

PRODUCT NAME	PRODUCT FEATURES	USE	PRODUCT COMBINATION	COLOR	COVERAGE		CONSISTENCY	FLEXIBILITY	NAIL HARDENING	NAIL EXTENSION	BENDABLE	PHASE	CURE TYPE	CURE TIME	HEAT PRODUCTION	CLEANSE
White Babe Gel	slight coverage for baby boomer technique	nail preparation (dry manicure) + Perfect Prep + Perfect Bond Primer	Bond Gel Vitamine+, Clear Gels, Cover Gels, Top Gels	milky white	✓		●●	●	✓	L	✓	single	UV, UV/LED	2–3 min., 60 sec.	●●●●●	✓
Pink Babe , Cover Babe, Cover Extra Gel	builder & nail bed extension gel, also suitable for baby boomer technique	nail preparation (dry manicure) + Perfect Prep + Perfect Bond Primer	Clear Gels, Extreme White Gel, Top Gels	pink tones	✓		●●●●●	●●	✓	L	✓	single	UV, UV/LED	2–3 min., 60 sec.	●●●●●	✓
Active Pink Gel	builder gel for intensifying the nail bed color	nail preparation (dry manicure) + Perfect Prep + Perfect Bond Primer	Bond Gel Vitamine+, Cover Gels, Extreme White Gel, Top Gels, gel polish	glassy pink	✗		●●●●●	●	✓	XL	✓	single	UV, UV/LED	2–3 min., 60 sec.	●●●●●	✓
Cream Pink Gel	builder & nail bed extension gel, also suitable for rose quartz technique	nail preparation (dry manicure) + Perfect Prep + Perfect Bond Primer	Bond Gel Vitamine+, Extreme White Gel, Clear Gels, Top Gels	barbie pink	✓		●●	●●	✓	L	✓	single	UV, UV/LED	2–3 min., 60 sec.	●●	✓
Build & Fill Gel Rouge	nail bed extension gel also suitable for infill	nail preparation (dry manicure) + Perfect Prep + Perfect Bond Primer	Bond Gel Vitamine+, Extreme White Gel, Clear Gels, Top Gels	darker meat tone	✓		●●●	●●	✓	M	✓	single	UV, UV/LED	2–3 min., 60 sec.	●●●	✓
Build & Fill Gel Blush	nail bed extension gel also suitable for infill	nail preparation (dry manicure) + Perfect Prep + Perfect Bond Primer	Bond Gel Vitamine+, Extreme White Gel, Clear Gels, Top Gels	lighter meat tone	✓		●●●●	●●	✓	M	✓	single	UV, UV/LED	2–3 min., 60 sec.	●●●	✓
Cover Gel	highly pigmented nail bed extension gel	nail preparation (dry manicure) + Perfect Prep + Perfect Bond Primer	Bond Gel Vitamine+, Extreme White Gel, Clear Gels, Top Gels	warm pink tone	✓		●●●	●●	✗	M	✓	single	UV, UV/LED	2–3 min., 60 sec.	●●	✓
Cover Nude Gel	highly pigmented nail bed extension gel	nail preparation (dry manicure) + Perfect Prep + Perfect Bond Primer	Bond Gel Vitamine+, Extreme White Gel, Clear Gels, Top Gels	lighter natural pink tone	✓		●●	●●	✗	M	✓	single	UV, UV/LED	2–3 min., 60 sec.	●●	✓
Extreme White Gel	builder gel for creating French free edges	nail preparation (dry manicure) + Perfect Prep + Perfect Bond Primer + Base Gel	Bond Gel Vitamine+, Extreme White Gel, Clear Gels, Top Gels	extremely white	✓		●●●●	●●●●	✗	XL	✓	multi	UV, UV/LED	2–3 min., 60 - 90 sec.	●●●	✓
Cover Silver & Gold Shine Gel	nail bed extension gel with good coverage	nail preparation (dry manicure) + Perfect Prep + Perfect Bond Primer + Base Gel	Clear Gels, Extreme White Gel, Top Gels	pearly shine, nude tone	✓		●●●	●●	✓	M	✓	multi	UV, UV/LED	2–3 min., 60 sec.	●●●●	✓
Perfect AcrylGel	the lightness of gel nails combined with the stability of acrylic nails	nail preparation (dry manicure) + Perfect Prep + Perfect Bond Primer	Bond Gel Vitamine+, Top Gels	various tones	varies		●●●●●	●●	✓	XL	✓	single	UV, UV/LED	4–5 min., 120 sec.	●●●●●	✓
AcrylGel Prime	the lightness of gel nails combined with the stability of acrylic nails	nail preparation (dry manicure) + Perfect Prep + Perfect Bond Primer	Bond Gel Vitamine+, Top Gels	various tones	varies		●●●●●	●●	✓	XL	✓	single	UV, UV/LED	4–5 min., 120 sec.	●	✓

CONSISTENCY

● thin | ●● medium thin | ●●● medium thick | ●●●● thick | ●●●●● very thick

FLEXIBILITY

● rigid | ●● slightly flexible | ●●● medium flexible | ●●●● flexible | ●●●●● highly flexible

HEAT PRODUCTION

● almost none | ●● minimal | ●●● slight | ●●●● medium | ●●●●● high



PERFECT

# AcrylGel, Prime



## AcrylGel Prime

■ AcrylGel in a tube

Extra thick, yet easy to shape as long as needed. This product combines the benefits of gel and acrylic builder materials: applicable in a few steps, stays put and easy to file. Ideal for quick and efficient salon work on problematic nails as well. It provides excellent adhesion, and it only requires a liquid primer as base. Suitable for strengthening the natural nail and sculpting extensions both with nail forms and reverse tips. The polymerization during curing does not produce heat, so this product causes no burning sensation.

**PERFECT TIP:** If the product starts sticking to the bristles, dampen your brush with Perfect AcrylGel Solution. Use AcrylGel Tip kit for quick and easy building.

**PHASE:** single-phase | **HEAT PRODUCTION:** almost none | **CURE TIME:** UV 4-5 min., UV/LED 120 sec.

30 G

THICKNESS



FLEXIBILITY



**COVER NUDE**  
ACRYLCEL PRIME



PNZ4068

**COVER ROSE**  
ACRYLCEL PRIME



PNZ4069

**CLEAR**  
ACRYLCEL PRIME



PNZ4070

**MEGA WHITE**  
ACRYLCEL PRIME



PNZ4071

**BABYBOOMER WHITE**  
ACRYLCEL PRIME



PNZ4072

**BABY PINK**  
ACRYLCEL PRIME



PNZ4073

**COVER DARK**  
ACRYLCEL PRIME



PNZ4074

**GLITTERY RED**  
ACRYLCEL PRIME



PNZ4081

**PIXIE ROSEGOLD**  
ACRYLCEL PRIME



PNZ4075

**SHIMMER GOLD**  
ACRYLCEL PRIME



PNZ4076

**SHATTERED DIAMOND**  
ACRYLCEL PRIME



PNZ4077

**RAINBOW QUARTZ**  
ACRYLCEL PRIME



PNZ4078

**PINKY FLAKES**  
ACRYLCEL PRIME



PNZ4082

**PEARLY ROSE**  
ACRYLCEL PRIME



PNZ4079

**SPARKLE WHITE**  
ACRYLCEL PRIME



PNZ4080

NEW

ÉVI DARABOS'  
FAVORITE



SEE  
TUBE SQUEEZER  
ON PAGE 159.



FAVORITE OF STUDENTS



### PERFECT ACRYLGEL

■ AcrylGel in a container

Despite its thick consistency, it is easy to shape as long as needed. This product combines the benefits of gel and acrylic builder materials: applicable in a few steps, stays put and easy to file. It provides excellent adhesion, and it only requires a liquid primer as base. Suitable for strengthening the natural nail and sculpting extensions both with nail forms and reverse tips.

**PERFECT TIP:** If the product starts sticking to the bristles, dampen your brush with Perfect AcrylGel Solution. Use an Art & Corrector Pen silicone tool to avoid accidentally moving the nail form and to minimize waste. Without applying excessive pressure, simply roll the AcrylGel onto the nail plate for shaping.

**PHASE:** single-phase | **HEAT PRODUCTION:** high | **CURE TIME:** UV 4-5 min., UV/LED 120 sec.

15 G  
50 G

THICKNESS ● ● ● ● ●

FLEXIBILITY ● ●



CLEAR  
ACRYLGEL

15 G PNZ4053  
50 G PNZ4062



WHITE  
ACRYLGEL

PNZ4054



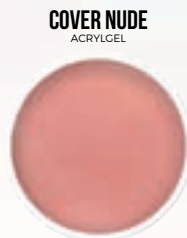
COVER  
ACRYLGEL

PNZ4055  
PNZ4060



PINK  
ACRYLGEL

PNZ4056



COVER NUDE  
ACRYLGEL

PNZ4059



COVER GLITTER  
ACRYLGEL

PNZ4061



FOR ACRYLGEL  
SHAPING &  
CLEANSING

### ACRYLGEL SOLUTION

■ Solution developed for AcrylGel

Perfectly suitable for working with AcrylGel, cleaning the brush and removing the tacky layer. Contains no fragrance and color additives, so it causes no discoloration in the AcrylGel. **PLEASE NOTE:** Avoid overusing AcrylGel Solution as it may overthin the product, causing lifting and/or small bubbles.

100 ML PNZ4057

### ACRYLGEL TIP KIT

■ Perfect AcrylGel Tips

Designed specifically for the Perfect AcrylGel, this clear plastic tip set helps minimize building time. The tips allow achieving the exact length desired, without any waste. They also minimize filing time, as they deliver a consistent and perfectly smooth surface. The tips are reusable.

120 PCS / PACK PNTGY005



**THE SMILE LINE**  
for the French building technique

**STRAIGHT LINES**  
for determining the length of the nail to build

THE TIPS ARE REUSABLE

### ACRYLGEL KIT

■ AcrylGel starter kit

The best choice if you like AcrylGel or if you have not tried it before! Purchase your favorites in a set and **save 10%** of the single price!

**PHASE:** single-phase | **HEAT PRODUCTION:** high | **CURE TIME:** UV 4-5 min., UV/LED 120 sec.

KIT PNKG016

THICKNESS ● ● ● ● ●

FLEXIBILITY ● ●

#### CONTENTS

- 15 G AcrylGel Clear
- 15 G AcrylGel White
- 15 G AcrylGel Cover
- DB Basic Line Acryl Brush #6

CLEAR  
ACRYLGEL

WHITE  
ACRYLGEL

COVER  
ACRYLGEL

#06  
BASIC LINE  
ACRYL



AVAILABLE  
IN SET AT A  
BETTER  
PRICE





### GLUE GEL

■ Thick consistency gel with adhesive effect

As opposed to traditional adhesives, this product contains no cyanoacrylates and leaves no foggy residue on nail art pieces, so these retain their original beauty. The elements of the design are movable until the nails get under the lamp. Rhinestones and crystals are securely and reliably enclosed, so even lower quality stones are less likely to fall off. The slightest amount of UV light initiates polymerization, making this product highly suitable for securing larger nail art elements or clusters. Given the product’s flexibility, it is durable on nails coated with gel polish as well. Can be filed or soaked off.

**CURE TIME:** UV 2–3 min., UV/LED 60 sec.

15 ML PNZ076

THICKNESS	● ● ● ● ●
FLEXIBILITY	● ● ● ● ●
SOLUBILITY	● ● ● ● ●



### TRANSFER FOIL GEL

■ Gel for transfer foils

Thick, transparent gel with a sticky effect for the application of transfer foils. It can be applied onto any cured and then buffed surface and color gel polish, since it causes no discoloration on the surface. The clean and dry piece of transfer foil can be re-applied to the same surface to cover the spots that might have been missed. A flexible top gel is recommended as a finishing touch.

**CURE TIME:** UV 1 min., UV/LED 30 sec.

**PERFECT TIP:** After curing the Transfer foil Gel, firmly press the foil onto the sticky surface, then quickly pull away. Recommended for the patchwork technique.

15 ML PNZ110

THICKNESS	● ● ● ● ●
FLEXIBILITY	● ● ● ● ●
SOLUBILITY	● ●



TIPS:  
 Évi Darabos



SEE  
 TRANSFER FOILS  
 ON PAGE 144.



FLEXIBLE,  
STRETCHABLE

## SPIDER GEL

■ Stretchable, no-cleanser gels with high pigment content

Elastic and flexible, no-cleanser color gel with high pigment content for creating a cobweb-like pattern with the finest threads. Suitable for use on matte surfaces; you can also use a dotting tool pen or a nail art brush to create the desired pattern on cured flexible, no-cleanser shine gel. Cures to shiny, requires neither cleansing nor top gel.

**CURE TIME:** UV 4 min., UV/LED 3 min. (min. 36W lamps)

5 G

WHITE  
SPIDER GEL

PNPG19

BLACK  
SPIDER GEL

PNPG20

THICKNESS	● ● ● ● ●
FLEXIBILITY	● ● ● ● ●
SOLUBILITY	●

## DELUX GEL

■ Highly pigmented, no-cleanser color gels, providing great coverage in one layer

A medium thick, no-cleanser color gel with high pigment content; provides excellent coverage in one layer. Cures to shiny, requires no top gel. Highly suitable for the one-move technique, surface nail art and creating colored French edge. Don't allow it to cure completely if you want to apply a top layer, to allow proper adhesion for the top gel. The colors will mix well.

**CURE TIME:** UV 2–3 min., UV/LED 90 sec.

5 G

PNZ2001-2060

NAILS:  
Martina PutzBLACK  
DELUX GEL

PNZ2001

WHITE  
DELUX GEL

PNZ2002

THICKNESS	● ● ●
FLEXIBILITY	● ●
SOLUBILITY	●

## CREAM GEL

■ Thick, no-cleanser cream gel for nail art

A thick decor cream gel requiring no cleansing, suitable for surface nail art. Suitable for use on matte surfaces; you can also use this product to paint the desired pattern on half-cured no-cleanser, flexible shine gel. For multiple layers, cure each layer separately halfway. Cures to shiny, requires neither cleansing nor top gel.

**CURE TIME:** UV 3 minutes, UV/LED 60 seconds

**PERFECT TIP:** This gel is more rigid, so it is only suitable for surface designs on smaller areas.

5 G

PNPG06-18



THICKNESS	● ● ● ● ●
FLEXIBILITY	● ●
SOLUBILITY	●

ÉVI DARABOS'  
FAVORITENAILS:  
Évi Darabos



# ACRYLIC

## Powders

### Standard Speed Acrylic Powders

■ For both beginners and experienced nail technicians

Standard speed acrylic powders of extra fine grain size. They provide maximal adhesion and a creamy texture. Remarkable bendability due to the flexible nature of the products. Drying time is influenced by the chosen liquid.

#### CLEAR POWDER

■ Transparent acrylic builder powder

Perfectly highlights the base colors. Excellent in combination with nail art color gels (Delux gel, Cream gel), for uses such as Sugar Effect technique or the matting of gel polish.

15 ML PNP0001

50 ML PNP0006

140 G PNP0007



#### SALON CLEAR POWDER

■ Crystal clear, transparent acrylic builder powder

In comparison with the Clear powder, it is even more transparent, crystal clear and more finely milled.

15 ML PNP0080

50 ML PNP0085



#### WHITE POWDER

■ White acrylic builder powder

Its slower drying time makes it ideal for creating smile lines by wiping with a brush.

15 ML PNP0011







## WHITE BOOMER POWDER

■ Slightly transparent, milky white acrylic powder

Slightly clear for creating the perfect gradient. Ideal for the Baby Boomer technique.

15 ML PNP0060

50 ML PNP0062



## PINK POWDER

■ Clear, light pink acrylic builder powder

Perfectly highlights the color of the nail bed. Suitable for French nails without nail bed extension and changing the tone of the nail bed extension powder.

15 ML PNP0021



## SPARKLING ROSE POWDER

■ For the building of colorful, glittering porcelain nails

Build pearly porcelain nails! Our colorful porcelain powders are back in nude colors! Our popular Porcelain powder is enriched with small glitter, extra fine-grained, medium-textured, pearlescent. It is easy to bend due to its flexibility.

15 ML PNP0112

50 ML PNP0113



## SHINY PEARL POWDER

■ For the building of colorful, glittering porcelain nails

Build pearly porcelain nails! Our colorful porcelain powders are back in nude colors! Our popular Porcelain powder is enriched with small glitter, extra fine-grained, medium-textured, pearlescent. It is easy to bend due to its flexibility.

15 ML PNP0114

50 ML PNP0115



## COVER BOOMER POWDER

■ Slightly clear, peachy pink acrylic powder

The natural tone fits any skin tone well. Slightly clear for creating the perfect gradient; ideal choice for Baby Boomer technique and even total coverage. Ideal for French nail infills.

15 ML PNP0057

50 ML PNP0059







### PINK MASQUE POWDER

■ Acrylic nail extension powder of natural nude tone

Matches a variety of skin tones. Suitable for covering up any imperfections of the nail bed, and allows seamless infills. The strong pigmentation ensures reliable coverage for nail surface imperfections and the free edge.

15 ML PNP0003

50 ML PNP0045

140 G PNP0052



### SALON COVER PINK POWDER

■ Acrylic nail bed extension powder with a cool purple tone

Extra finely milled, nail bed extension acrylic powder with a cool purple undertone. Highly pigmented, ensuring a long lasting color.

15 ML PNP0082

50 ML PNP0086

COOL  
PURPLE  
UNDERTONE



### PEACH MASQUE POWDER

■ Acrylic nail bed extension powder of peachy tone

This powder has a beautiful, highly pigmented, peachy tone and provides spotless and perfectly consistent coverage.

15 ML PNP0054

140 G PNP0087

IRELAND'S  
FAVORITE

## High Speed Acrylic Powders

■ For experienced nail technicians and competitors

Finely milled acrylic powders with faster drying time. They have a creamy texture and provide maximum adhesion. These products are flexible, ensuring remarkable bendability. Can be used with both standard and high speed liquids.

**PERFECT TIP:** In colder ambient temperatures, nail technicians of all skill levels can benefit from the properties of these products.

### SPEED CLEAR POWDER

■ Crystal clear acrylic builder powder

Builder powder with the same characteristics as the Clear powder, but a roughly one and a half times quicker drying time. Besides offering excellent color retention, this product allows for easy sculpting and consistent application.

15 ML PNP0013

50 ML PNP0014

140 G PNP0047



### SPEED EXTRA WHITE POWDER

■ Brilliant white acrylic builder powder

The product's bluish white undertones ensure a dazzling white color. Besides offering excellent color retention, this product allows for easy sculpting and consistent application.

15 ML PNP0019

50 ML PNP0020

140 G PNP0049



BRILLIANT  
WHITE

### SPEED PINK POWDER

■ Light pink acrylic builder powder

Perfectly highlights the color of the nail bed. Suitable for French nails without nail bed extension and changing the tone of the nail bed extension powder.

15 ML PNP0015

50 ML PNP0016

140 G PNP0048



GEL AND

Acrylic Kits



# Luxury Kit Gel Collections

■ Gel kit for trainees or as a trial set for Perfect Nails products

AVAILABLE  
IN SET AT A  
BETTER  
PRICE

## LUXURY PREMIUM KIT

■ Extra flexible gels for building size XS nails

CONTENTS	KIT	PNKG011
15 G Premium Gel	15 G Extreme White Gel	15 G Cover Gel
100 ML Gel Cleaner	15 ML Top Gel	15 ML Perfect Prep
		15 ML Perfect Bond Primer



## LUXURY PREMIUM - SMART KIT

■ Extra flexible gels for building size XS nails; includes a UV/LED lamp with 21 energy-saving LEDs

CONTENTS	KIT	PNKG072
15 G Premium Gel	15 G Extreme White Gel	15 G Cover Gel
100 ML Gel Cleaner	15 ML Top Gel	15 ML Perfect Prep
1 PC Smart Universal UV/LED Lamp		15 ML Perfect Bond Primer



## LUXURY PLATINUM KIT

■ Medium thick gels for building size M nails

CONTENTS	KIT	PNKG008
15 G Platinum Gel	15 G Extreme White Gel	15 G Cover Gel
100 ML Gel Cleaner	15 ML Top Gel	15 ML Perfect Prep
		15 ML Perfect Bond Primer

EUROPE'S  
FAVORITE



## LUXURY PLATINUM - UNICORN PINK KIT

■ Medium thick gels for building size M nails; includes a UV/LED lamp with 30 energy-saving LEDs

CONTENTS	KIT	PNKG069
15 G Platinum Gel	15 G Extreme White Gel	15 G Cover Gel
100 ML Gel Cleaner	15 ML Top Gel	15 ML Perfect Prep
1 PC Unicorn Pink UV/LED Lamp		15 ML Perfect Bond Primer







LUXURY CRYSTAL KIT

Thick gels for building size L nails

CONTENTS	KIT	PNKG010
----------	-----	---------

<b>15 G</b>	Crystal Clear Gel	<b>15 G</b>	Extreme White Gel	<b>15 G</b>	Cover Gel		
<b>100 ML</b>	Gel Cleaner	<b>15 ML</b>	Top Gel	<b>15 ML</b>	Perfect Prep	<b>15 ML</b>	Perfect Bond Primer

LUXURY CRYSTAL - SMART KIT

Thick gels for building size L nails; includes a UV/LED lamp with 21 energy-saving LEDs

CONTENTS	KIT	PNKG071
----------	-----	---------

15 G	Crystal Clear Gel	15 G	Extreme White Gel	15 G	Cover Gel		
100 ML	Gel Cleaner	15 ML	Top Gel	15 ML	Perfect Prep	15 ML	Perfect Bond Primer
1 PC	Smart Universal UV/LED Lamp						



LUXURY ICE KIT

Thick gels for building size L-XL nails

CONTENTS	KIT	PNKG009
----------	-----	---------

15 G	Ice Gel	15 G	Extreme White Gel	15 G	Cover Gel		
100 ML	Gel Cleaner	15 ML	Top Gel	15 ML	Perfect Prep	15 ML	Perfect Bond Primer

LUXURY ICE - UNICORN SILVER KIT

Thick gels for building size L-XL nails; includes a UV/LED lamp with 30 energy-saving LEDs

CONTENTS	KIT	PNKG070
----------	-----	---------

<b>15 G</b>	Ice Gel	<b>15 G</b>	Extreme White Gel	<b>15 G</b>	Cover Gel		
<b>100 ML</b>	Gel Cleaner	<b>15 ML</b>	Top Gel	<b>15 ML</b>	Perfect Prep	<b>15 ML</b>	Perfect Bond Primer
<b>1 PC</b>	Unicorn Silver UV/LED Lamp						



Luxury Kit Acrylic Collections

Acrylic kit for trainees or as a trial set for Perfect Nails products

AVAILABLE  
IN SET AT A  
BETTER  
PRICE

LUXURY FRENCH TRADITIONAL X KIT

Recommended for traditional French nails

Standard acrylic powders with high speed liquid.

CONTENTS	KIT	PNKP014
----------	-----	---------

15 ML	Clear Powder	15 ML	White Powder	15 ML	Pink Powder
100 ML	Intensive Liquid	30 ML	Brush Cleaner	30 ML	Perfect Prep
15 ML	Perfect Bond Primer				



LUXURY FRENCH TRADITIONAL KIT

Recommended for traditional French nails

Standard acrylic powders with standard speed liquid

CONTENTS	KIT	PNKP013
----------	-----	---------

15 ML	Clear Powder	15 ML	White Powder	15 ML	Pink Powder		
100 ML	Liquid	30 ML	Brush Cleaner	30 ML	Perfect Prep	15 ML	Perfect Bond Primer



LUXURY FRENCH SPEED KIT

Recommended for traditional French nails

Acrylic powders from the speed range with standard speed liquid.

CONTENTS	KIT	PNKP017
----------	-----	---------

15 ML	Speed Clear Powder	15 ML	Speed Extra White Powder	15 ML	Pink Powder		
100 ML	Liquid	30 ML	Brush Cleaner	30 ML	Perfect Prep	15 ML	Perfect Bond Primer





LUXURY FRENCH SPEED X KIT

■ Recommended for traditional French nails

Acrylic powders from the speed range with high speed liquid.

- CONTENTS
- KIT
- PNKP018
- 15 ML
- Speed Clear Powder
- 15 ML
- Speed Extra White Powder
- 15 ML
- Pink Powder
- 100 ML
- Intensive Liquid
- 30 ML
- Brush Cleaner
- 30 ML
- Perfect Prep
- 15 ML
- Perfect Bond Primer



LUXURY COVER TRADITIONAL KIT

■ Recommended for French nails with nail extension

Standard acrylic powders with standard speed liquid.

- CONTENTS
- KIT
- PNKP011
- 15 ML
- Clear Powder
- 15 ML
- White Powder
- 15 ML
- Pink Masque Powder
- 100 ML
- Liquid
- 30 ML
- Brush Cleaner
- 30 ML
- Perfect Prep
- 15 ML
- Perfect Bond Primer



LUXURY COVER TRADITIONAL X KIT

■ Recommended for French nails with nail extension

Standard acrylic powders with high speed liquid.

- CONTENTS
- KIT
- PNKP012
- 15 ML
- Clear Powder
- 15 ML
- White Powder
- 15 ML
- Pink Masque Powder
- 100 ML
- Intensive Liquid
- 30 ML
- Brush Cleaner
- 30 ML
- Perfect Prep
- 15 ML
- Perfect Bond Primer

LUXURY COVER SPEED KIT

■ Recommended for French nails with nail extension

Acrylic powders from the speed range with standard speed liquid.

- CONTENTS
- KIT
- PNKP015
- 15 ML
- Speed Clear Powder
- 15 ML
- Speed Extra White Powder
- 15 ML
- Pink Masque Powder
- 100 ML
- Liquid
- 30 ML
- Brush Cleaner
- 30 ML
- Perfect Prep
- 15 ML
- Perfect Bond Primer

LUXURY COVER SPEED X KIT

■ Recommended for French nails with nail extension

Acrylic powders from the speed range with high speed liquid.

- CONTENTS
- KIT
- PNKP016
- 15 ML
- Speed Clear Powder
- 15 ML
- Speed Extra White Powder
- 15 ML
- Pink Masque Powder
- 100 ML
- Intensive Liquid
- 30 ML
- Brush Cleaner
- 30 ML
- Perfect Prep
- 15 ML
- Perfect Bond Primer



NAILS:  
Évi Darabos





## Premium Nail Files

Very strong and durable, half moon shaped zebra files that last up to twice as long as traditional files. The foam-covered inner core (a central plastic sheet) guarantees a more flexible and softer filing surface.

### PREMIUM #80/80

For removing acrylic nails.

**PC** PNR0613

### PREMIUM #100/100

For removing acrylic/gel/AcrylicGel nails and gel polish.

**PC** PNR0614

### PREMIUM #150/150

For filing and shaping acrylic nails.

**PC** PNR0615

### PREMIUM #180/180

For filing and shaping gel nails, and refining acrylics.

**PC** PNR0616

### PREMIUM #100/180

For removing/filing/shaping acrylic/gel/AcrylicGel nails.

**PC** PNR0617

### PREMIUM MIX #180/220

A combined file and buffer for the gentle preparation of natural nails, surface finishing and shaping.

**PC** PNR0618



# Supreme Waterproof Nail Files

The surface of the Supreme files feature a special “sandpaper-like” coating, and have water-repellent qualities, allowing for sanitization. Any filing residue and dust can be almost completely removed with a wet nail brush. The Supreme Waterproof files last up to 4 times longer than traditional files.



## WATERPROOF #100/100

For removing acrylic/gel/AcrylicGel nails and gel polish.

PC PNR0622

## WATERPROOF #150/150

For filing and shaping acrylic nails.

PC PNR0623

## WATERPROOF #180/180

For filing and shaping gel nails, and refining acrylics.

PC PNR0624

## WATERPROOF #220/220

For refining acrylic/gel/AcrylicGel nail enhancements, and refining the surface of the natural nail.

PC PNR0625

## WATERPROOF #150/220

For filing and shaping acrylic nails, as well as refining acrylic/gel/AcrylicGel nail enhancements, and refining the surface of the natural nail.

PC PNR0626

## WATERPROOF LACGEL FINE/MEDIUM

For refining acrylic/gel/AcrylicGel nail enhancements, for filing and shaping gel nails, and refining the surface of the natural nail.

PC PNR0627

# Shaping, Refining

For shaping and refining nail enhancements and the surface of the natural nail.

## PURPLE FOAM, WIDE #80/80

For refining the acrylic nail surface.

PC PNR0604



## ORANGE FOAM, WIDE #100/100

For refining the acrylic/gel/AcrylicGel nail surface and prepping the natural nails.

PC PNR0606



## BLUE FOAM, WIDE #180/180

For refining the acrylic/gel/AcrylicGel nail surface.

PC PNR0605



## WHITE FOAM CURVED #100/100

For refining the acrylic/gel/AcrylicGel nail surface and prepping the natural nails.

PC PNR0601





RECTANGULAR BLACK #100/180

For refining acrylic/gel/AcrylGel nail enhancements, for filing, shaping and prepping the natural nail, and for gel polish removal.

PC PNR0301



TEARDROP #80/100

For shaping and refining acrylic/gel/AcrylGel nail enhancements, for gel polish removal, and for shaping the natural nail. The narrow side enables high precision filing even along the nail walls. The wider side is suitable for filing larger surfaces.

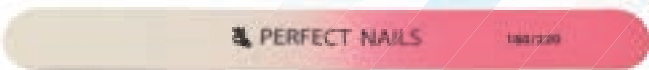
- BLACKPC PNR0010
- WHITEPC PNR0011



OMBRE WOODEN NAIL FILE #180/220

For shaping the natural nail and nail enhancements, and for filing the smile line. This slightly curved tool facilitates shaping, since the concave side enables you better access to the nail sides and corners. It is much easier to shape the smile line, to refine the sides and create the endings of the smile line with pinpoint accuracy.

PC PNR0628



ROBUST MIX #100/180

For refining acrylic/gel/AcrylGel nail enhancements, for filing, shaping and prepping the natural nail, and for gel polish removal.

PC PNR0610



BUFFER BLOCK

4-sided buffer block

Use it to remove surface shine from natural nails, and to refine the surface of nail extensions.

- WHITE #150/150PC PNRB001
- PINK #150/150PC PNRB002
- OMBRE #180/180PC PNRB026
- PURPLE #120/120PC PNRB027



THREE-WAY BUFFER BLOCK #100/180/180

3-sided buffer block

Use it to remove acrylic/gel/AcrylGel and gel polish residue.  
**CAUTION!** Do not use on the natural nail to remove surface shine.

- PURPLE #60/100/100PC PNRB003
- ORANGE #100/180/180PC PNRB004



# Polishing For Shine

Recommended for polishing acrylics and the natural nail to achieve surface shine. These tools are a perfect alternative for Japanese manicure or polisher kits to ensure long-lasting, high shine.

## BUFFER HALFMOON GREEN #280/280

■ Surface refiner with a halfmoon shape

As a last step for refining the surface of acrylics and the natural nail before final polishing for high shine.

PC PNR0612



## HALFMOON ORANGE SUPER SHINER #400/3000

■ Double-sided surface refiner/polisher with a halfmoon shape

Use the orange side for refining the nail surface, then polish the nails with the white side to achieve a long-lasting, high shine.

PC PNR0611



## THREE-WAY SHINER #240/800/3000

■ 3-sided surface refiner/polisher shaped like a nail file

Use the purple and the white side for refining the nail surface, then polish the nails with the grey side to achieve a long-lasting, high shine.

PC PNR0400



## TWO-WAY SUPER SHINER #600/3000

■ Double-sided surface refiner/polisher shaped like a block/nail file

Use the green side for refining the nail surface, then polish the nails with the white side to achieve a long-lasting, high shine.

NAIL FILE PC PNR0404

BUFFER PC PNRB012



## DISTRIBUTOR WANTED



We aim to form relationships with such talented and ambitious entrepreneur partners, who can embrace the highest standards, expectations and values to contribute to the brand's overall success.



# BUILDER & Nail Art Brushes



## Acrylic Builder Brushes

### BASIC LINE ACRYL

■ Acrylic builder brush with natural bristles

The special, flattened brush base and pointed tip facilitate the spreading of product and the creation of an elegant smile-line. This brush is suitable for short nails and working with a small amount of material. Recommended for trainees.

#6	PC	PNEP030
#8	PC	PNEP029



### ACRYL BUILDER

■ Acrylic builder brush with flattened head and natural bristles

This acrylic builder brush has a flattened head and a pointed tip. The bristles are more bendy, enabling a more flexible handling of product. The jewel brush features a diamond cut metal handle and cap. Recommended for daily salon work.

#6	PC	PNEP026
#8	PC	PNEP027
#10	PC	PNEP028



### DIAMOND MASTER ACRYL

■ Acrylic master brush with natural bristles

The extra thick, hard-packed, stronger bristles make this brush soak up liquid better, and facilitate the pushing and spreading of product. The brush has a precision tip that helps to achieve a perfect smile line. Recommended for championships, quick salon work, and for sculpting longer nails. The jewel brush features a diamond cut metal handle and cap.

#10	PC	PNEP018
#12	PC	PNEP019





WOOD ACRYL BRUSH - REGULAR

■ Designed for regular-length and short nails  
Recommended for nail tech students. The special, flattened brush base and pointed tip makes it easier to spread the material and create a nice smile-line. Given its smaller size, it is more suitable for short/extra short nails and working with a small amount of material.

- #6 PC PNEP037
- #8 PC PNEP038
- #10 PC PNEP039



WOOD ACRYL BRUSH - ADVANCED #6

■ Acrylic builder brush with natural bristles and the brushes have real wood handles  
Recommended for nail tech students and pros alike. The brush has a flattened ferrule and a pointed tip. It is suitable for small amounts of material and the application of colored products.

PC PNEP033



WOOD ACRYL BRUSH - ADVANCED #8

■ Acrylic builder brush with natural bristles and the brushes have real wood handles  
Precision cut bristles, pointed tip. Recommended for professional nail techs. The advanced, precision cut bristles make it easier to sculpt acrylic nails.

PC PNEP034



WOOD ACRYL BRUSH - ADVANCED #10

■ Acrylic builder brush with natural bristles and the brushes have real wood handles  
Designed for regular-length and longer nails. The advanced, precision cut bristles make it easier to sculpt acrylic nails.

PC PNEP035



WOOD ACRYL BRUSH - ADVANCED #12

■ Acrylic builder brush with natural bristles and the brushes have real wood handles  
Designed for regular-length and extra-long nails. The advanced, precision cut bristles make it easier to sculpt acrylic nails.

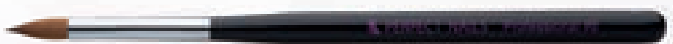
PC PNEP036



WOOD ACRYL BRUSH - PROFESSIONAL #8

■ Designed for regular-length and short nails  
The advanced, precision cut bristles made of 100% Kolinsky hair make it easier to sculpt acrylic nails. In sync with nature! The Wood Brush range is designed for professional use, and the brushes have real wood handles.

PC PNEP031



WOOD ACRYL BRUSH - PROFESSIONAL #10

■ Designed for regular-length and longer nails  
The advanced, precision cut bristles made of 100% Kolinsky hair make it easier to sculpt acrylic nails. In sync with nature! The Wood Brush range is designed for professional use, and the brushes have real wood handles.

PC PNEP032





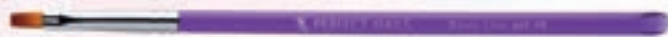
# Gel Builder Brushes

## BASIC LINE GEL #6

■ Straight-edge gel builder brush with synthetic bristles

Recommended specifically for trainees, and designed to facilitate the shaping of the smile line and the application of the right amount of product.

PC PNEZ023



## GEL BUILDER

■ Straight-edge gel builder brush with synthetic bristles

#4 has a smaller brush head that makes it ideal for shorter nails and for swiping the smile line. The larger brush head of #6 comes in handy when a larger amount of product needs to be applied and for extreme nail shapes.

#4 PC PNEZ020

#6 PC PNEZ021



## DIAMOND PROFESSIONAL GEL #6

■ Diamond handle gel builder brush with synthetic bristles

We recommend it for sculpting professional gel nails. Excellent choice for our clear and nail bed extension materials.

PC PNEZ022



## GEL LAQUER #6

■ Oval profile gel blder brush with synthetic bristles

The flattened and rounded tip facilitates pushing the builder gel towards the rear skin fold and wiping the French smile line.

PC PNEZ028



## GEL GRANDE

■ Larger, oval profile gel builder brush with natural bristles

Specially designed to conform to the nail bed in order to facilitate precise application and spreading of gels (including colored materials). The perfect choice for less experienced nail technicians. Also recommended for applying AcrylGel.

PC PNEZ026



## GEL PICCOLO

■ Smaller, oval profile gel builder brush with natural bristles

Special brush with shorter bristles. The design conforms to the nail bed in order to facilitate precise application and spreading of gels (including colored materials). Also recommended for applying AcrylGel.

PC PNEZ027



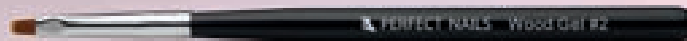
NAILS:  
Évi Darabos

**WOOD GEL BRUSH #2**

■ Regular straight-edge gel builder brush with synthetic bristles

Suitable for smaller surfaces, and it allows easy access to areas near the side walls; the narrower and smaller head makes this brush ideal for swiping the smile line.

PC PNEZ029

**WOOD GEL BRUSH #4**

■ Regular straight-edge gel builder brush with synthetic bristles

Suitable for smaller surfaces, and it allows easy access to areas near the side walls; the narrower and smaller head makes this brush ideal for swiping the smile line. This is a stronger, denser brush that facilitates the handling of thicker, harder products as well.

PC PNEZ030

**WOOD GEL BRUSH #6**

■ Regular straight-edge gel builder brush with synthetic bristles

Suitable for regular sized surfaces, and it allows easy access to areas near the side walls; the average width makes this brush ideal for applying product quantities for salon-length nails. This is a stronger, denser brush that facilitates the handling of thicker, harder products as well.

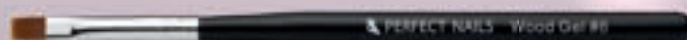
PC PNEZ031

**WOOD GEL BRUSH #8**

■ Regular straight-edge gel builder brush with synthetic bristles

Ideal for larger surfaces, longer extensions and for picking up a larger quantity of product.

PC PNEZ032



# Nail Art Brushes

**AQUARELLE #4**

■ Aquarelle nail art brush with natural bristles

Recommended for the aquarelle technique, gel painting and working with Plastiline Gel. The rounded base and the pointed tip make this brush ideal for painting smaller and larger designs as well.

PC PNED014

**ONEMOVE #1**

■ Wedge tip brush with natural bristles

Recommended for the one-move technique.

PC PNED030

**ONEMOVE REVO**

■ Wedge tip brush with natural bristles

The enhanced version of the OneMove #1 brush. A denser tip brush. Allows for more precise nail art designs even on larger areas.

PC PNED042







NAIL ART 3D

■ Flattened conical nail art brush with pointed tip and natural bristles

Recommended for gel painting, Plastiline Gel, and creating acrylic flowers and other 3D effects.



#2	PC	PNED032
#4	PC	PNED033



MINERAL ART

■ Snake tongue-shaped nail art brush with natural bristles

The synthetic bristles form a snake tongue shape and allow for the application of multiple colors at once, while maintaining the contours between colors. With the variation of colors and shapes, you can achieve a stone/geode effect on the nails.



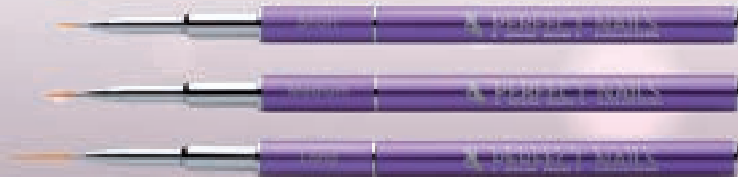
PC PNED051



NAIL ART

■ Extra slim nail art brush with synthetic bristles

Suitable for painting tendril designs, thin straight lines, gel contours and painting a narrow French edge.



SHORT	PC	PNED034
MEDIUM	PC	PNED035
LONG	PC	PNED036

MINI NATURAL #000

■ Super slim (4mm) nail art brush with natural bristles

Recommended for precision painting with the aquarelle technique, creating fine lines to decorate flowers and extra thin contours.

PC PNED039



NAIL ART 300 #1

■ Short nail art brush with natural bristles

Recommended specifically for acrylic paints and the aquarelle technique to create fine lines and tendrils.

PC PNED011



ART & PAINT

■ Nail art brush with natural bristles, a flattened head and a curved edge

Suitable for gel painting, as well as the One move and the Zhostovo techniques.

PC PNED044

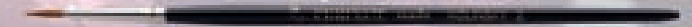


ACRYLIC NAIL ART #2

■ Thin, pointed tip brush with natural bristles

Excellent for acrylic nail art, smaller swirls, lace patterns and acrylic type painting.

PC PNEP002



ART & CORRECTOR PEN

■ Multifunctional silicone tool

Flexible, fine tip, steady neck. Suitable for removing materials from the skin, cleaning the cuticle, creating lace and 3D acrylic patterns, placing/arranging minor decorative elements on the nails, applying the AcrylGel and Spider Gel materials as well as applying rhinestones onto the nail surface.

PC PNED049

NAIL ART BRUSH SET

■ Extra slim nail art brush set with synthetic bristles

Suitable for creating designs with the finest details using Delux Gel, Cream Gel and other color gels, lacgels and acrylic paints.

3 PCS / PACKAGE PNED050

PERFECT LINE

■ Elongated, slim-tip nail art brush with natural bristles

The rigid neck and the flexible tip of the brush facilitate the painting of thin lines and fine tendrils.

S

PC PNED047

M

PC PNED046

OMBRE

■ Comb-like brush with thinned out tip and natural bristles

Suitable for creating seamless gradients with gel, gel polish and acrylic paints. Perfect for Ombre and Baby boomer effects.

PC PNED048

SHADING/OMBRE SPONGE

■ Double-headed sponge applicator for the Ombre technique

Allows for easier application of nail art powders and flakes. Use this sponge to achieve seamless color gradients. Ideal for Ombre, Baby boomer and Airbrush techniques. The 2 sponge heads are replaceable, and the handle features sparkly crystals.

**PERFECT TIP:** Please store this tool horizontally and clean thoroughly after use. Make sure to wait for the tool to dry completely before using it again. Aroma, Gel or Brush Cleaner is recommended for cleaning the tool heads.

SPONGE

PC PNSE650

REPLACEMENT  
HEADS

4 PCS / PACKAGE PNSE651

WOOD ART BRUSH #1

■ Regular straight-edge gel builder brush with synthetic bristles

A brush with a diameter of 0.7mm and the length of approx. 13mm, ideal for longer tendrils, curved and straight lines, and for painting the smile line.

PC PNED052

WOOD ART BRUSH #2

■ Regular straight-edge gel builder brush with synthetic bristles

A brush with a diameter of 2 mm and the length of approx. 12 mm, ideal for shorter tendrils, contouring, tiny details, and for painting the smile line. Ideal for painting extremely thin lines, contours, shading, color gradients, and also great for the “wet-on-wet” technique.

PC PNED053

WOOD ART BRUSH #3

■ Regular straight-edge gel builder brush with synthetic bristles

A brush with a diameter of 1 mm and the length of approx. 9 mm, ideal for shorter tendrils, contouring, tiny details, and for painting the smile line. Ideal for painting extremely thin lines, contours, shading, color gradients, and also great for the “wet-on-wet” technique.

PC PNED054



# TIPS AND

## Nail Forms

### Nail Tips

NEW

#### FULL COVERAGE GEL ARTIFICIAL NAIL TIP

Revolutionary innovation without stenciling and agglutination! Full Coverage Artificial Nail Tips have arrived in two different sizes with the trendiest shapes. Shorten your salon work with these tips that allow you to facilitate the process of fake nail building!



BALLERINA  
MEDIUM

120 PCS PNTFC01



ALMOND  
SHORT

120 PCS PNTFC02



SQUARE  
MEDIUM

120 PCS PNTFC03



OVAL  
SHORT

120 PCS PNTFC04







### ULTRA FORM TIP

Straight, rectangular tips with parallel sides and a shallow C-curve. They have a regular contact area and a medium size support surface. Ultra Form Tips are thinner, allowing for quicker filing when blending the nail enhancement with the natural nail. These tips are available from size #1 to #10 in natural and clear versions.

NATURAL KIT 100 PCS PNTUF00



### NAIL GLUE

Extra strong adhesion, quick setting, non-discoloring tip glue.

36 PNRA001 7,56 PNRA010



NAILS:  
Gabi Rusznák

# Nail Forms

### GALAXY NAIL FORM

This high-quality product has a strong grip and is easy to apply due to its wings. The latest trend accessories and tools should not be missing from the repertoire of a professional nail technician. In the galaxy collection, we also have the Artificial Nail Template, which is coming in the colors of outer space and will be an excellent companion to your modern salon environment.

50 PCS PNSE737 300 PCS PNSE736



### SALON NAIL FORM

High-quality, strong adhesion template with optimal arc position. Due to its rigid material, it retains its shape perfectly while being able to bend easily. Designed for minor extensions and corrections, it is essential for salon work. This template is ideal for cube-shaped nails with parallel sides due to guides and perforation; it keeps it's arch long and matches perfectly.

50 PCS PNSE725 300 PCS PNSE724



### BAT-SHAPE NAIL FORM

Premium quality nail form with strong adhesion and optimal curve retention. Once placed, it stays put and retains the curve as long as needed. The nail form allows extensions up to size XL, and the precision grid facilitates the sculpting of the desired shape and length.

50 PCS PNSE012 500 PCS PNSE011



### IRON NAIL FORM

Newly developed product with a thicker material. It is extremely easy to shape, keeps the desired cylindrical shape for hours, and provides excellent adhesion and strength. Using this nail form makes the job of trainees a lot easier as well. The uniqueness of our IRON nail form lies in the special layers that contain metal. Although this results in a thicker material than our other nail forms, the IRON form holds the desired shape as long as needed.

200 PCS PNSE6134





# PROFESSIONAL

## Metallic Tools & Accessories



### PERFECT MANICURE SCISSORS

■ Manicure scissors for professional use, made of medical grade Solingen stainless steel

These premium quality scissors feature a pair of precisely and smoothly closing cutting edges. The unique design of the blades allows a more comfortable and precise use, providing perfect cutting even at the tip of the scissors. The blades stay sharp for an extended time. Their surface has a silky-matte finish for extra comfort during use.



PC SPA2002

PC SPA2003

PC SPA2004

### TIP CLIPPER

■ A straight edge tip clipper

For nail enhancement with tips, and shortening the existing nail enhancements.

PC PNSE628





### CUTICLE PUSHER & SCRAPER 2 IN 1 – MANI

- Curved cuticle pusher & scraper

Recommended for professional manicure; pushing back the cuticle and scraping off the tethered skin from the nail surface before gel polish application. The spoon-shaped head is used for pushing back the cuticle, while the curved head is suitable for scraping.

PC PNSE6129



### CUTICLE PUSHER & SCRAPER 2 IN 1 – PRO

- Professional, curved cuticle pusher & scraper

Double-sided metallic cuticle pusher & scraper for preparing the natural nail for manicure and nail enhancements. The spoon head is used for pushing back the cuticle, while the curved head is used for scraping up the tethered skin from the nail surface.

PC PNSE623



### CUTICLE PUSHER & SCRAPER 2 IN 1 – FLAT

- Straight and flat cuticle pusher & scraper

Double-sided metallic cuticle pusher & scraper for preparing the natural nail for manicure and nail enhancements. The spoon head is used for pushing back the cuticle, while the straight/flat head is used for scraping up the tethered skin from the nail surface.

PC PNSE624



### C-CURVE PINCHER TOOL

- Sturdier construction with a firmer grip

Specially designed X-cross nail enhancement pincher for creating and retaining the perfect C-curve.

PC PNSE629



### NAIL ART TWEEZERS

- Curved Nail Art tweezers

Pair of curved tweezers with pointed tips making it easier to pick up the smaller nail art bits.

PC PNSE627



### DIAMOND DOTTING TOOL

- Decor and dotting tool with diamond-studded handle

This tool has a spike and a precision dotting end for various types of nail art with color gels, color acrylics and acrylic paints.

PC PNSE632



### NAIL ART PEN

- Nail art and dotting pen

Double-headed nail art pen with a pointy and a rounded head. Suitable for working on both natural nails and nail enhancements involving acrylic paint, color gels and acrylics.

PC PND10



### SPATULA

- Metallic mixing spatula

For stirring builder gels, mixing in glitter and acrylic powders, and positioning the AcrylGel on the nail.

PC PNSE626

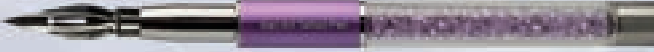


### NAIL ART TATTOO PEN

- Nail tattoo pen with replaceable nibs

Rigid and extremely pointy tip allows for drawing precise patterns and even text lines using properly thinned acrylic paint.

PC PNSE630





# Galaxy Accessories

NEW

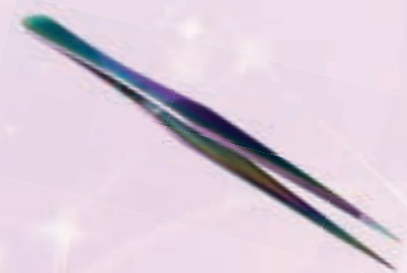


## TITANIUM NAIL AND CUTICLE CUTTER - GALAXY

■ Professional manicure cuticle cutter

Sharp and accurately cuts off surplus skin. The cuticle and calluses can be easily removed thanks to its sharp edge. Using the tip, the stones and ornaments can take out. This tool will fit perfectly with the other devices in the galaxy collection. It's an excellent alternative to scissors. Allows easy and simple shape design when cutting a template. It does not bounce or spark when using stones or ornaments like a drill machine.

PC PNSE732



## TITANIUM UNIVERSAL TWEEZER - GALAXY

■ Professional Nail Art tweezers

This wonderful tool makes putting ornaments, stones, and stickers much easier and faster. It's a straight and strong titanium tweezer. It closes perfectly and precisely with simple pressure. Due to its pointed end, it is perfect for smaller and larger ornaments too.

PC PNSE731



## TITANIUM UNIVERSAL SCISSORS – GALAXY CRANE BIRD

■ Universal manicure scissors

Its blade is thinner than that of nail scissors. It is safe to use due to its blunt tip. It is also excellent for cutting stickers and templates. We can substitute the skin cutting scissors with it, as with that, it is not recommended to cut paper, stencils, or stickers due to the possibility of shortening the life of the blade. In addition, the straight edge of the universal titanium scissors allows a more precise cut.

PC PNSE733

## TITANIUM CUTICLE PUSHER - GALAXY

■ Curved cuticle pusher & scraper

It helps lift the cuticle and scrape off adhering skin, an essential part of professional manicure.

PC PNSE730

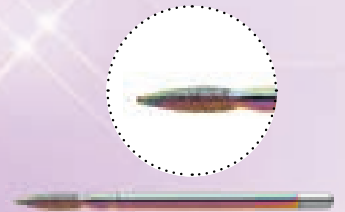


## DRILL BIT - GALAXY

■ Carbide bit for manicure

Not too sharp, so it does not cut, yet its thin tip cleans deeply. Laying on a natural nail plate, it mattees and lifts to cleanse the ramparts. We can easily clean the ramparts without damage, and it is also easy to thin and remove calluses. It is also suitable for fine matting of natural nail plates in addition to ramparts.

PC PNG4074





# DRILL BITS

## & Sanding Bits



## For Prepping

### DRILL BIT CLEANING BRUSH

■ The drill bit cleaning brush in gold is suitable for the removal of skin debris, nail dust and product residue.

It effectively removes gel, acrylic, acrylgel or gel polish residue. Carbide, diamond and stone drill bits can all be cleaned, so they can be used longer.

PC PNSE719

### SMALL CONE DRILL BIT

■ Small carbide cone drill bit with lozenge-pattern teeth

With fine teeth, recommended specifically for precision jobs, the quick removal of the cuticle (upon pushing back) and cleaning.

PC PNG4056

### PUSH UP DRILL BIT

■ Carbide bit for manicure

Recommended for lifting the pushed back cuticle and cleaning the nail plate. Also allows for the easy removal of the thickened skin at the nail folds. Also recommended for clients with sensitive skin.

PC PNG4073

### NARROW, CONICAL, DIAMOND-ENCROUTE DRILL BIT

■ Narrow, conical, diamond-encrusted drill bit for skin removal

This bit is ideal for cleaning up the cuticle areas that are hard to reach with a nail file. It removes the cuticle tethered to the nail plate and creates a matte nail surface. We recommend using this drill bit at a lower setting of your drill machine.

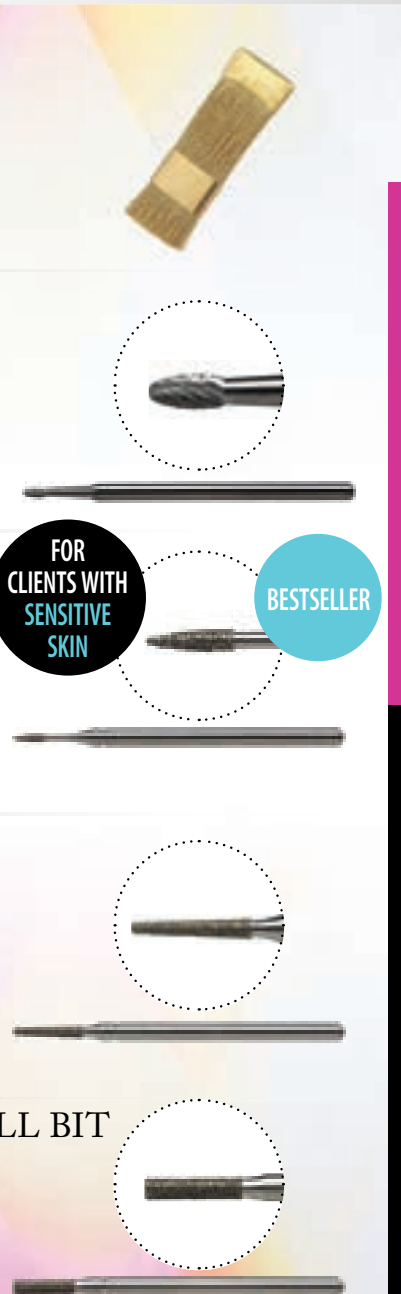
PC PNG4063

### NARROW, CYLINDRICAL, DIAMOND-ENCROUTE DRILL BIT

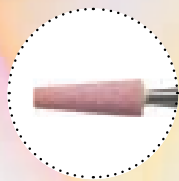
■ Cylindrical, diamond-encrusted carbide bit

Recommended for removing tethered skin at the cuticle area.

PC PNG4064





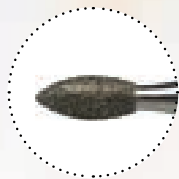


### CONE-SHAPED, STONE-ENCRUSTED DRILL BIT

■ Cone-shaped stone-encrusted carbide drill bit

Suitable for pushing back the cuticle and gently cleaning the nail plate at the cuticle area.

PC PNG4065



### FLAME-SHAPED, DIAMOND-ENCRUSTED DRILL BIT

■ Oblong, cylindrical, diamond-encrusted carbide bit with a pointed end

Suitable for deep cleaning the pushed back cuticle.

PC PNG4066



### BALL-SHAPED, DIAMOND-ENCRUSTED DRILL BIT

■ Ball-shaped, diamond-encrusted carbide bit

Suitable for buffing uneven skin edges and smoothing out the edges after the use of scissors.

PC PNG4067



### RUSSIAN MANICURE DRILL BIT SET

■ Set of 5 different carbide bits

A set especially selected for a technique combining several different Russian Manicure techniques.

CONTENTS KIT PNG4068

PC Narrow, cylindrical, diamond-encrusted drill bit

PC Flame-shaped, diamond-encrusted drill bit

PC Ball-shaped, diamond-encrusted drill bit

PC Cone-shaped, stone-encrusted drill bit

PC Narrow, conical, diamond-encrusted drill bit



NARROW, CYLINDRICAL,  
DIAMOND-ENCRUSTED  
DRILL BIT



NARROW, CONICAL,  
DIAMOND-ENCRUSTED  
DRILL BIT



FLAME-SHAPED,  
DIAMOND-ENCRUSTED  
DRILL BIT



CONE-SHAPED,  
STONE-ENCRUSTED  
DRILL BIT



BALL-SHAPED,  
DIAMOND-ENCRUSTED  
DRILL BIT

## For Surface Refining

### SILVER DRILL BIT

■ Medium rough, conical carbide drill bit

Suitable for refining and filing nail enhancements, and for infill. This bit is also suitable for pedicure: use it for dry or wet callus removal. Easy to sanitize.

PC PNG4054



### GOLD DRILL BIT

■ Medium rough, conical carbide drill bit

Suitable for refining and filing nail enhancements. This bit is also suitable for pedicure: use it for dry or wet callus removal. Easy to sanitize.

PC PNG4055

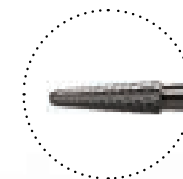


### POINTY, CONE-SHAPED DRILL BIT

■ Pointy, cone-shaped carbide drill bit with lozenge-pattern teeth

Fine teeth specifically for precision manicure, for thinning the gel or acrylic layer by the cuticle and cleaning the free edge under the nail at the prepping phase.

PC PNG4062

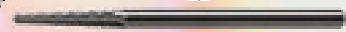
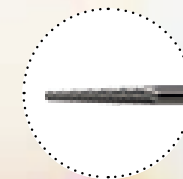


### CARBIDE DRILL BIT WITH A LOZENGE PATTERN

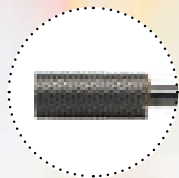
■ Cone-shaped carbide drill bit with a lozenge pattern for nail thinning

Perfect for the from-below cleaning of the free edge and nail thinning, filing out air bubbles as well as the filing of the smile line and cleaning the corners.

PC PNG4072



# For Removal and Shortening

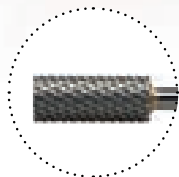


## SILVER DRILL BIT

■ Medium strength carbide bit for gels

Specifically for removing and shortening gel nail enhancements. For pedicure; use it for dry or wet callus removal; perfectly sanitizable.

PC PNG4052

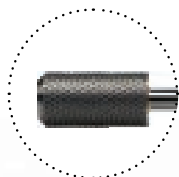


## SILVER DRILL BIT

■ Rough carbide drill bit for acrylic techniques

Specifically for removing and shortening acrylic nail enhancements. For pedicure; use it for dry or wet callus removal; perfectly sanitizable.

PC PNG4053

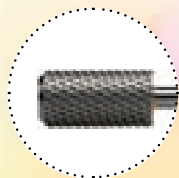


## ROUNDED HEAD, CYLINDRICAL DRILL BIT

■ Medium strength, cylindrical carbide bit for gels

Wider bit with rounded edge specifically for removing and shortening gel nail enhancements and surface refining. Also suitable for removing foot calluses (requires a special pedicure machine). Perfectly sanitizable.

PC PNG4058



## ROUNDED HEAD, CYLINDRICAL DRILL BIT

■ Rough, cylindrical carbide drill bit for acrylic techniques

Wider bit with rounded edge specifically for removing and shortening acrylic nail enhancements and surface refining. Also suitable for removing foot calluses (requires a special pedicure machine). Perfectly sanitizable.

PC PNG4059

## LARGE, LAMELLAR CARBIDE DRILL BIT

■ Large carbide drill bit with lamellar grit

The sharp lamellar grit is ideal for shortening, thinning and removing nail enhancements. Recommended for the quick removal of a large amount of material and buffing out the lifted parts. Also suitable for removing foot calluses (requires a special pedicure machine). Perfectly sanitizable.

PC PNG4060

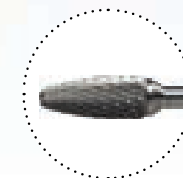


## LARGE DRILL BIT WITH RHOMBOID GRIT

■ Large carbide drill bit with rhomboid grit

The sharp teeth are ideal for shortening, thinning and removing nail enhancements, buffing out the lifted parts and surface buffing. Also suitable for removing foot calluses (requires a special pedicure machine). Perfectly sanitizable.

PC PNG4061



## CYLINDRICAL DRILL BIT WITH RHOMBOID GRIT

■ Cylindrical carbide bit with rhomboid grit for gel polish technique

Ideal for removing gel polish and gel, shortening for filling and general refining or complete surface thinning and surface refining. The product is safe to use and won't harm the skin.

PC PNG4071



## DRILL BIT - GALAXY

■ Carbide bit for manicure

Not too sharp, so it does not cut, yet its thin tip cleans deeply. Laying on a natural nail plate, it mattees and lifts to cleanse the ramparts. We can easily clean the ramparts without damage, and it is also easy to thin and remove calluses. It is also suitable for fine matting of natural nail plates in addition to ramparts.

PC PNG4074

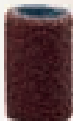




# Sanding Bands

■ Replaceable sanding bands

High quality sanding bands which will stay on the jack even at high rpm's. Various grain sizes to offer the right roughness sanding band for each phase.



## BASIC SANDING BAND #80

Suitable for the shortening and/or removal of nail enhancements.

5 PCS / PACKAGE PNG4100    50 PCS / PACKAGE PNG4103



## BASIC SANDING BAND #100

Suitable for the shortening and/or removal of nail enhancements.

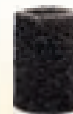
5 PCS / PACKAGE PNG4101    50 PCS / PACKAGE PNG4104



## BASIC SANDING BAND #120

Suitable for the shaping and refining of nail enhancements.

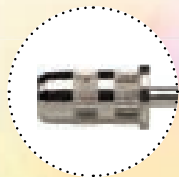
5 PCS / PACKAGE PNG4102



## PREMIUM SANDING BAND #80

Suitable for the shortening and/or removal of nail enhancements.

5 PCS / PACKAGE PNG4109    50 PCS / PACKAGE PNG4113



## SANDING BAND MANDREL

■ Stainless steel mandrel for sanding bands.

PC PNG4110



PASTEL PINK

PC PNG3046



PASTEL PURPLE

PC PNG3044

COMPACT  
NAIL DRILL



SCAN ME!

## Nail Drills

### PERFECT DRILL MACHINE

■ Professional drill machine with micromotor

Premium quality drill machine manufactured by a dental instrument manufacturer, featuring a professional handpiece equipped with a super silent micromotor. The machine has a holder for the handpiece and a flexible cable. A powerful, advanced micromotor provides seamless change of rotational speeds between 0 and 30 000 rpm for the handpiece, which does not wobble, and is particularly gentle on the nail surface. The direction of the rotation can be switched, and the operation is vibration-free. The advanced chuck of the handpiece makes the changing of drill bits quick and easy, saving you precious time during salon work. Recommended for beginner and advanced nail techs for manicure techniques and nail enhancements.

PC PNG3040



### BASIC DRILL MACHINE

■ Semi-professional drill machine with micromotor

A compact, streamlined, semi-professional drill machine that has a holder for the handpiece and a flexible cable. A strong, advanced micromotor provides seamless change of rotational speeds between 0 and 20 000 rpm for the handpiece, which does not wobble, and is particularly gentle on the nail surface. The direction of the rotation can be switched, and the operation is vibration-free. The advanced chuck of the handpiece makes the changing of drill bits quick and easy, saving you precious time during salon work. Recommended for trainees and advanced nail techs for nail extensions and manicure techniques. The compact size makes this machine an ideal choice as a first or on-the-go nail drill.

PC PNG3043



### SILICONE DUST CAP

■ Protects the handpiece of the nail drill machine against dust

Use our silicone dust caps to prevent dust from entering the handpiece of the drill during the filing process. As such, the chuck of the handpiece is protected, extending the lifecycle of the handpiece.

3 PCS / PACKAGE PNSE648







### COMPACT NAIL DRILL

■ The most compact and mobile nail drill machine

Practical and stylish with a streamlined design. It does not take up much space on your workstation, since you can charge the handpiece directly. It is an ideal tool if you are on the go. Convenience is ensured by a long cable (1.6m) and USB charging.



WITH  
SPEED  
CONTROL

PASTEL PURPLE

PC PNG3044

PASTEL PINK

PC PNG3046



### PROXY NAIL DUST COLLECTOR

■ Dust-free comfort

Here is one of the most convenient solutions with that you can even protect your health. Thanks to the Proxy nail dust collector, you can make your guests' time more pleasant, not only thanks to its quiet and powerful operation but also its soft hand rest.

LENGTH: 28.5cm | WIDTH: 30cm | HEIGHT: 12cm | POWER: 25W | INPUT VOLTAGE: 220-240V

PC PNG1043



### PERFECT NAILS AC ADAPTER

■ Universal adapter

Get the most out of your nail machines! Better quality, higher performance! Now available our universal charging head for the ideal performance! Compatible with all Perfect Nails hand-drill, (Compact Nail Drill - Portable Nail Drill) and with our nail UV/LED lights, Mouse UV/LED lights. Output power: 5V=2A.

PC PNG3004

## UV/LED Lamps

### UNIVERSAL UV/LED LAMP

■ Universal 48 Watt UV/LED lamp with various glossy surfaces / in different colors

Designed for nail technicians, this compact 48 Watt UV/LED lamp with 30 energy-saving LED bulbs and low-profile sensors helps to ensure perfect bonding of the material even on the thumb. The lamp has a half-down ("low" heat/ reduced speed) mode to protect the nailbed from a burning feeling induced by the sudden heat. This model is equipped with timer buttons (30-60-99 sec) and a smart sensor. The magnetized base of the lamp has a mirror surface and it is detachable

WIDTH: 18.5cm | HEIGHT: 8cm | DEPTH: 15cm

PINK	PC	PNG1036
SILVER	PC	PNG1037
ROSEGOLD	PC	PNG1042
PEGASUS	PC	PNG1041



NEW



NEW

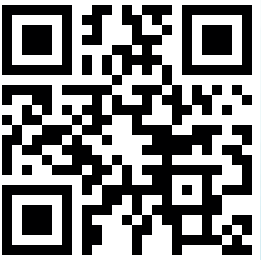


30 PCS  
UV/LED

TRENDY  
AND CUTE



SEE UNICORN  
BRUSHES ON  
PAGE 150.



SCAN ME!



### X UV/LED LAMP

■ 90W UV/LED lamp with multi-color LED band

Apart from an outstanding 90W output, the lamp has a multi-color LED band, as well as an integrated fan to avoid overheating. It has a dual light source and 45, well-arranged UV/LED lights, making sure that even the most challenging materials are perfectly cured. The lamp has a half-down ("low" heat / reduced speed) mode to protect the nailbed from a burning feeling induced by the sudden heat. This model is equipped with timer buttons (30–60–99 sec), a digital display, an infrared and smart sensor and timer memory. It has an extra long electronic cable. The lamp has a detachable mirror base, so this model is also ideal for pedicure.

**WIDTH:** 23.6cm | **HEIGHT:** 19.5cm | **DEPTH:** 11.5cm

**PC** PNG1039



### SMART UNIVERSAL UV/LED LAMP

■ 48W UV/LED lamp without a base

This lamp features a dual light source and 21, well-arranged UV/LED lights, providing an ultra quick cure time for products. The lamp's 48W output is much higher than the output of traditional 4-tube lamps. The lamp has a half-down ("low" heat / reduced speed) mode to protect the nailbed from a burning feeling induced by the sudden heat. This model is equipped with timer buttons (30–60–99 sec), a digital display, an infrared and smart sensor and timer memory. Having no base, this lamp is also ideal for pedicure.

**WIDTH:** 23cm | **HEIGHT:** 14.3cm | **DEPTH:** 9cm

**PC** PNG1034

### MOUSE GEL POLISH UV/LED LAMP

■ 6W UV/LED lamp for gel polish application

The extra small, highly portable 6W UV/LED lamp has a reduced output, timer buttons (45–60 sec) and is primarily recommended for curing gel polish. The lamp can be operated and charged via USB – from a mobile charger, a laptop, a powerbank or a desktop PC. The feet of the lamp can be folded in and out, without influencing the operation. Recommended for beginners, trainees and for at home use, although professional nail techs might also find this useful as a backup lamp or a temporary solution.

**WARNING!** Please apply gel polish in a thin layer to ensure complete curing.

**WIDTH:** 131mm | **HEIGHT:** 67mm | **DEPTH:** 19mm

**PC** PNG1038



### MASTER TABLE LED LAMP - EXTRA LED

■ Desktop lamp with 180 LEDs

Introducing the advanced, brighter desktop LED lamp that includes 180 energy-saving LEDs. An elongated design and bright LED lights deliver a clearly lit workstation for you. There are four levels of brightness to choose from, so you can customize your lighting for the different phases of salon work. The 15W desktop LED lamp has a fastening apparatus to safely lock the lamp in place on the workstation and save you valuable desktop space. The lamp has a flexible head allowing a 360-degree flexibility to achieve the perfect angle for your lighting. There are 180 energy-saving LED lights to provide a perfectly bright, white light for your workstation. This lighting does not produce vibrations on photos and videos.

**WIDTH:** 50cm | **HEIGHT:** 82cm

**PC** PNG1040





# STAMPING

## Accessories



### STAMPING NAIL POLISH

■ Nail polish for stamping

High-pigmentation nail polish colors designed for stamping. The extra pigmentation ensures that even the most intricate designs and the finest lines can all be seen on the end result. This nail polish is a bit thicker than regular nail polish to allow adequate drying time for stamping. It dries extremely quickly after application from the stamper. The stamping polish should be used on a cured, cleansed, and then buffed surface. A flexible top gel or top coat is needed as a finishing touch.

**PERFECT TIP:** Before application, make sure to shake the nail polish bottle to release pigments from the bottom.

**DRY TIME:** 1–2 minutes

**7 ML** PNDNY014-016 | PNDNY020-022 | PNDNY036-037



**NAILS:**  
Évi Darabos



### STAMPING SCRAPER

■ Plastic card for stamping

Extra slim, bendable, white plastic card that leaves an ideal amount of nail polish in the nooks and crannies of the stamping plates. Easy to clean.

**PC** PNDNY013







## STAMPING & PAINTING GEL 2 IN 1

■ No-cleanse gel for nail art

This no-cleanse, slightly flexible, high-pigmentation nail art gel provides complete coverage even if applied in a thin layer, making it an ideal choice for stamping, gel painting and the One Move technique. The gel-like consistency and the extra pigmentation ensure the visibility of the finest, most delicate lines on the end result. The stamping gel should be used on a no-cleanse, cured surface. The product cures to shiny, so there is no need for a finishing top gel.

**WARNING!** When used on a matte surface, a top gel is necessary as a finishing touch.

**CURE TIME:** UV 2 min., UV/LED 60 sec.

- 8 ML PNDNY017-019
- 8 ML PNDNY023-027
- 8 ML PNDNY030-035
- 8 ML PNDNY046-059
- 8 ML PNDNY075-079

THICKNESS	● ● ● ● ●
FLEXIBILITY	● ●
SOLUBILITY	●



## STAMPING PLATE

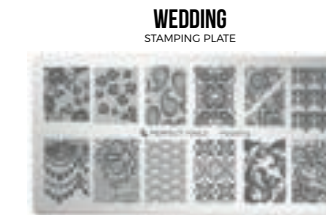
■ Stamping plate made of metal with various patterns

Each 6 x 12cm plate features a specific theme and has 12 different patterns that are all 100% usable. The stamping plates are ideal for stamping on the entire surface of the nail or for partial designs. They come in a colorful paper sleeve for practical storing.

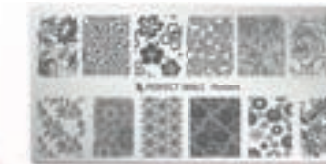
**PERFECT TIP:** Remove the protective foil before use, and thoroughly clean the plate's surface with acetone.



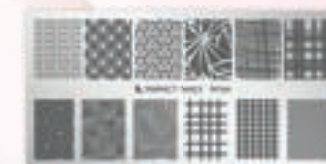
PNDNY001



PNDNY042



PNDNY007



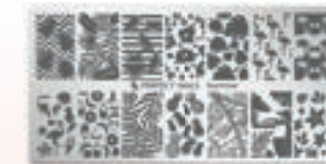
PNDNY010



PNDNY002



PNDNY005



PNDNY008



PNDNY038



PNDNY003



PNDNY006



PNDNY009



PNDNY043





BACKGROUNDS  
STAMPING PLATE

PNDNY062



LINE DRAWING  
STAMPING PLATE

PNDNY070



FUN FUN FUN  
STAMPING PLATE

PNDNY065



ANIMAL LOVE  
STAMPING PLATE

PNDNY039



CUTE & GIRLY  
STAMPING PLATE

PNDNY044



TINY MINI  
STAMPING PLATE

PNDNY072



WALLPAPER  
STAMPING PLATE

PNDNY041



ABSTRACT NATURE  
STAMPING PLATE

PNDNY060



NATURE LOVER  
STAMPING PLATE

PNDNY061

NEW

NEW



### HOLOGRAPHIC STAMPING PLATES CASE

Stamping Plate Organizer

Holographic, soft leather effect nail plate holder. Suitable for 6x12 cm printing plates, the 16 compartments allow you to keep your plates scratch-free. User friendly design.

PC PNSE734

### STAMPER - FROSTED CLEAR

Transparent stamper with a magnifying glass

Recommended for larger surfaces, though the integrated magnifying glass also helps with the positioning of smaller designs. The stamper is transparent, so you can place your design as accurately as possible. There is a see-through cap to protect the stamper when it is not in use.

**PERFECT TIP:** Gently clean the stamper with acetone-free nail polish remover before and after each use.

PC PNDNY012



### STAMPER - CLEAR

Transparent stamper

Recommended for smaller surfaces and smaller designs. The stamper is transparent, so you can place your design as accurately as possible. There is a see-through cap to protect the stamper when it is not in use.

**PERFECT TIP:** Gently clean the stamper with acetone-free nail polish remover before and after each use.

PC PNDNY011



TIPS:  
Gabi Rusznák



### Glitter Powders

■ Finely milled glitter dust for surface and encapsulated designs

These powders can be sprinkled onto top gel or color gel for sugaring designs, or encapsulated using builder gels, acrylics, Liquid Stone Gel and Glue Gel. They are also ideal for a French edge.

#### PIXIE POWDER

■ Colorful glitter powders

**MULTI WHITE**  
PIXIE POWDER



PNPP13

**RASPBERRY**  
PIXIE POWDER



PNPP20

**WHITE**  
PIXIE POWDER



PNPP21

#### STARDUST PIXIE POWDER

■ Finely milled glitter dust

**NEW**

**COLORFUL**  
PIXIE POWDER



PNP0116

**BLUE SKY**  
PIXIE POWDER



PNP0117

**GOLDEN SUN**  
PIXIE POWDER

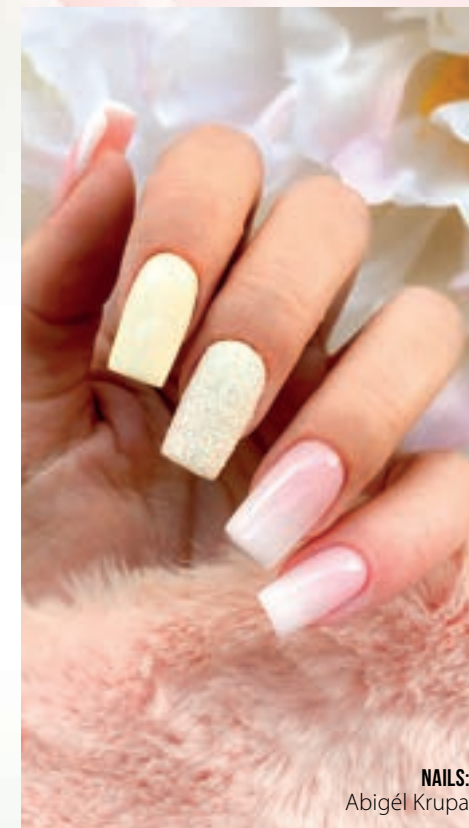


PNP0118

**SILVER**  
PIXIE POWDER



PNP0119



**NAILS:**  
Abigél Krupa

#### HOW TO USE

Sprinkle onto an uncured layer of color gel (e.g. Delux Gel) or no-cleans top gel (e.g. No Cleanse Top Shield), cure the nail, then gently remove the excess powder with a dusting brush.

**PERFECT TIP:** These powders can be mixed into the builder gel or acrylic powder before creating the nail enhancement for an encapsulated design.



## GLITTER POWDER

■ Finely milled glitter dust

NEW



## SNOW GRAINS

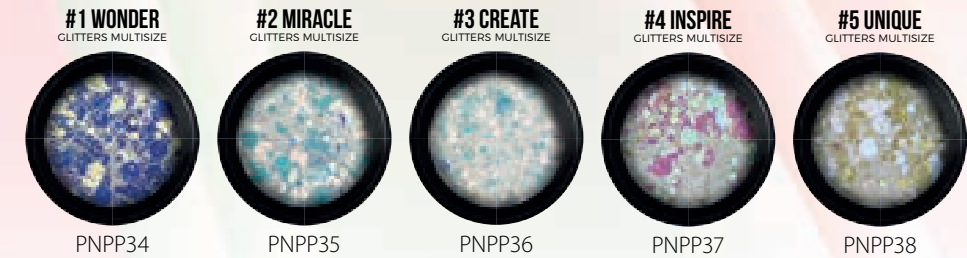
■ White glitter dust



## GLITTERS MULTISIZE

■ A mixture of two different sizes of glitter

NEW



# Chrome Powders

■ Extra finely milled, pixel-free chrome powders for surface nail art

These powders can be rubbed onto nail enhancements and gel polish, and they can also be used in combination with stamping.

## AURORA VEIL CHROME POWDER

■ Colorful northern lights effect chrome powder

NEW



## GALAXY CHROME POWDER

■ Extra finely milled, color-shifting chrome powders

NEW



## BLACK WIDOW

■ Extra finely milled, pixel-free chrome powders



## CHROME PEN

■ Real mirror chrome effect and exciting metallic sheen in a convenient pen.

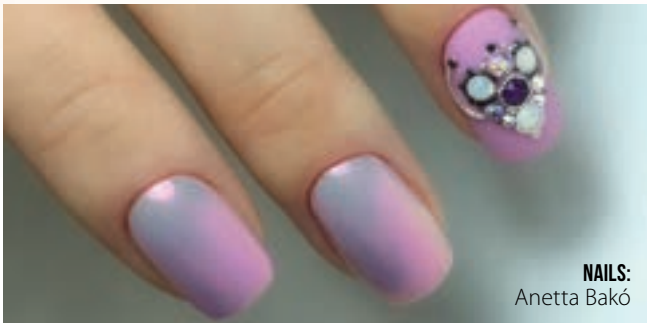
NEW





### UNICORN CHROME POWDER

■ Translucent chrome powders with a silky shine



### SCARABEUS CHROME POWDER

■ Iridescent, color-shifting chrome powder



### CHROME POWDER

■ Iridescent chrome powders



### HOW TO USE

Rub onto the surface of halfway cured no-cleanse top gel with an ombre sponge, then apply two layers of flexible top gel (e.g. Cool Shine Ever Gel). If used with stamping, gently press the powder into the halfway dried stamping polish or the halfway cured stamping gel, then apply a flexible top gel to seal your design.

**PERFECT TIP:** Sirene's Secret Holo Nail stickers are an ideal choice for masking to create quick and easy designs.

## Mermaid Powders

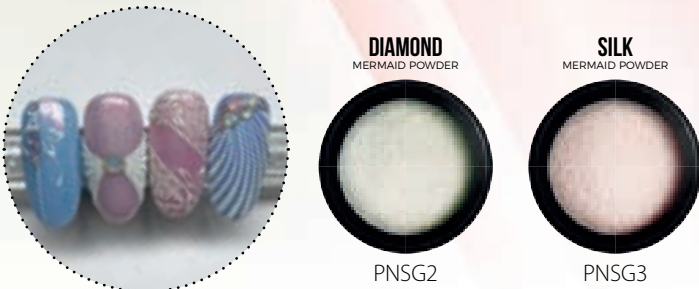
■ Finely milled, iridescent effect powders for surface nail art

Gently dab onto the surface of halfway cured gel polish or top gel that requires cleansing, then apply a thicker layer of flexible top gel.

**PERFECT TIP:** These powders can be sprinkled onto top gel or color gel for sugaring designs.

### MERMAID POWDER

■ Iridescent mermaid powder



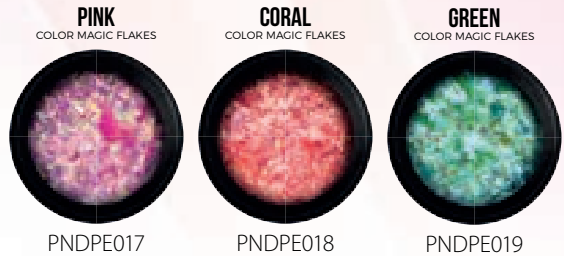
# Nail Art Flakes

■ Ultra thin, glittery nail art flakes for surface and encapsulated designs  
**PERFECT TIP:** When creating an encapsulated design, clear-capping can be done with builder gel, acrylic or a thicker coat of flexible top gel.

## COLOR MAGIC FLAKES

■ Semi-transparent, iridescent flakes in various colors

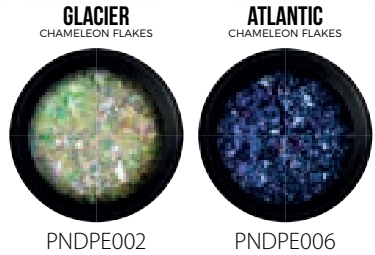
These flakes can be gently rubbed onto nail enhancements and gel polish or encapsulated using builder gels, acrylics, Glue Gel. They are also ideal for a French edge.



## CHAMELEON FLAKES

■ Multi-chrome, iridescent flakes

Ultra thin, glittery nail art flakes. These flakes can be gently rubbed onto nail enhancements and gel polish or encapsulated using builder gels, acrylics, Glue Gel. They are also ideal for a French edge.



## CHAMELEON CHROME FLAKES

■ Nail art flakes with chrome effect



## METAL CHROME FLAKES

■ Shiny, chrome-effect flakes



## WONDER FLAKES

Nail art flakes with a color-shifting metallic effect



## HOW TO USE

Rub onto the surface of cured no-cleanse top gel with an ombre sponge, then apply two layers of flexible top gel (e.g. Speed & Shine Top Gel).  
**PERFECT TIP:** When creating an encapsulated design, clear-capping can be done with builder gel, acrylic or a thicker coat of flexible top gel.



# Nail Art Flitters

■ Various shapes of flat flitters for encapsulated designs

These flakes can be encapsulated using builder gels, acrylics, Liquid Stone Gel or Glue Gel. Apply a generous layer of thicker consistency top gel (e.g. Nail Art Top Gel).



## NAIL CONFETTI

■ Round shaped flat confetti in various sizes and colors with a matte and pearly finish



# Water Decals Nail Art Stickers

■ Ideal for surface designs

## NAIL STICKERS

■ Water decals with various modern patterns and current holiday edition



## SELF-ADHESIVE STICKER

■ Various Patterns with pastel flowers



## HOW TO USE

Cut the chosen decal shape to size, and immerse it in water for 5 seconds. Take the decal out of the water, and remove the excess water by gently patting the surface of the decal with a dry paper towel. Then carefully remove the backing paper from the decal. Make sure to have a buffed, dry and dusted-off nail surface before you apply and gently smooth out the decal on it. Using vertical movements, gently remove the excess with a fine grit nail file (Premium #180) if needed. Apply a thicker coat of flexible top gel (e.g. Extreme Gloss Gel) as a finishing touch.

# Rhinestones for Nail Art

■ Ideal for surface designs

## 3D GEOMETRIC METALLIC NAIL ART

■ These amazing metallic shapes are ideal for accessorizing your nail designs.



## NAILSTAR STRASS

■ Premium quality rhinestones in various sizes and colors

20 PCS      100 PCS      1 440 PCS



SS3 Ø 1,3–1,5 mm    SS5 Ø 1,7–1,9 mm    SS10 Ø 2,7–2,9 mm    SS12 Ø 3–3,2 mm    SS16 Ø 3,2–3,4 mm

## MICRO PEARLS XS

■ Size XS metallic beads for jewel effect designs

NAIL  
TECHNICIANS'  
FAVORITE



NON-  
THINNING  
COLOR



## HOW TO USE

Apply a small amount of Glue Gel on the nail, then position the chosen pearl/rhinestone so that the Glue Gel surrounds it on all sides. Cure for 5-10 seconds. Finish your design by applying a flexible top gel onto the nail (e.g. Cool Shine Ever Gel or Velvet Matt Extra Gel). Do not apply the top gel onto the surface of the pearl/rhinestone itself.



# Transfer Foils

■ Ideal for surface designs

## TRANSFER FOIL KIT

■ Nail art foil for a patchwork effect

RAINBOW

PC PNTR026

METALLIC  
MANIA

PC PNTR025

SEE  
TRANSFERFOIL  
GEL ON  
PAGE 65.



NAILS:  
Noemi Hargitai

## HOW TO USE

Take scissors and cut out the desired shape from the foil roll. Apply Transferfoil Gel onto the nail in the desired shape, and cure it for min. 30 seconds. After curing, firmly press the foil piece onto the sticky surface, then quickly pull away. If you need to add more foil to the surface, repeat this step. Clear-capping can be done with builder gel or a thicker coat of flexible top gel (e.g. Extreme Gloss Gel).

**PERFECT TIP:** Try these with a matte top gel (e.g. Vevet Matt Extra Gel).

# YOU CAN NEVER HAVE ENOUGH!

## ELASTIC HARD MULTIPACK

## SPECIAL PRICE







### DISPOSABLE FACE MASK

■ Latex-free, disposable face mask

Protects against dust during the filing steps, and helps to avoid breathing in chemicals that might irritate the airways. The mask has an adjustable nose wire, a non-woven inner fabric layer and elastic ear loops for extra comfort.

**10 PCS / PACKAGE** PNV0104

**50 PCS / PACKAGE** PNV0107



### REUSABLE FACE MASK

■ Reusable and washable neoprene face mask with air chamber

The mask is elastic, so it fits any face shape perfectly. It features central stitching that allows for a comfortable air chamber between the nose and the mouth area. This prevents the mask from sticking to your lips, and eases your breathing and articulation. The nose bridge wire of the mask is padded to avoid chafing. Since the material is breathable, this mask gives noticeably more comfort for your skin. This unisex design is equally recommended for ladies and gentlemen.

**PC** PNV0106



### NITRILE GLOVES

■ Latex- and powder-free, disposable gloves

These gloves are elastic, flexible and thin enough to allow you to work comfortably. Compared to latex gloves, these are stronger, more durable and they do not tear easily. These gloves are resistant to chemicals and substances. The fingertips are micro textured, and this slightly coarse surface allows you to have a secure grip. Although the gloves are powder-free, they are designed to be put on and taken off easily. There is an added comfort in comparison with latex gloves: during wear, your hands will not get as sweaty. Also recommended for sensitive skin. All gloves are universal, so they are equally suitable for the left and the right hand.



S	<b>100 PCS / BOX</b>	PNV029
M	<b>100 PCS / BOX</b>	PNV028
L	<b>100 PCS / BOX</b>	PNV027



- Textile gloves with rubber-coated fingertips

S	PC	PNV035
M	PC	PNV036



- Self-adhesive, protective bandage

PINK	PC	PNV033
BROWN	PC	PNV034

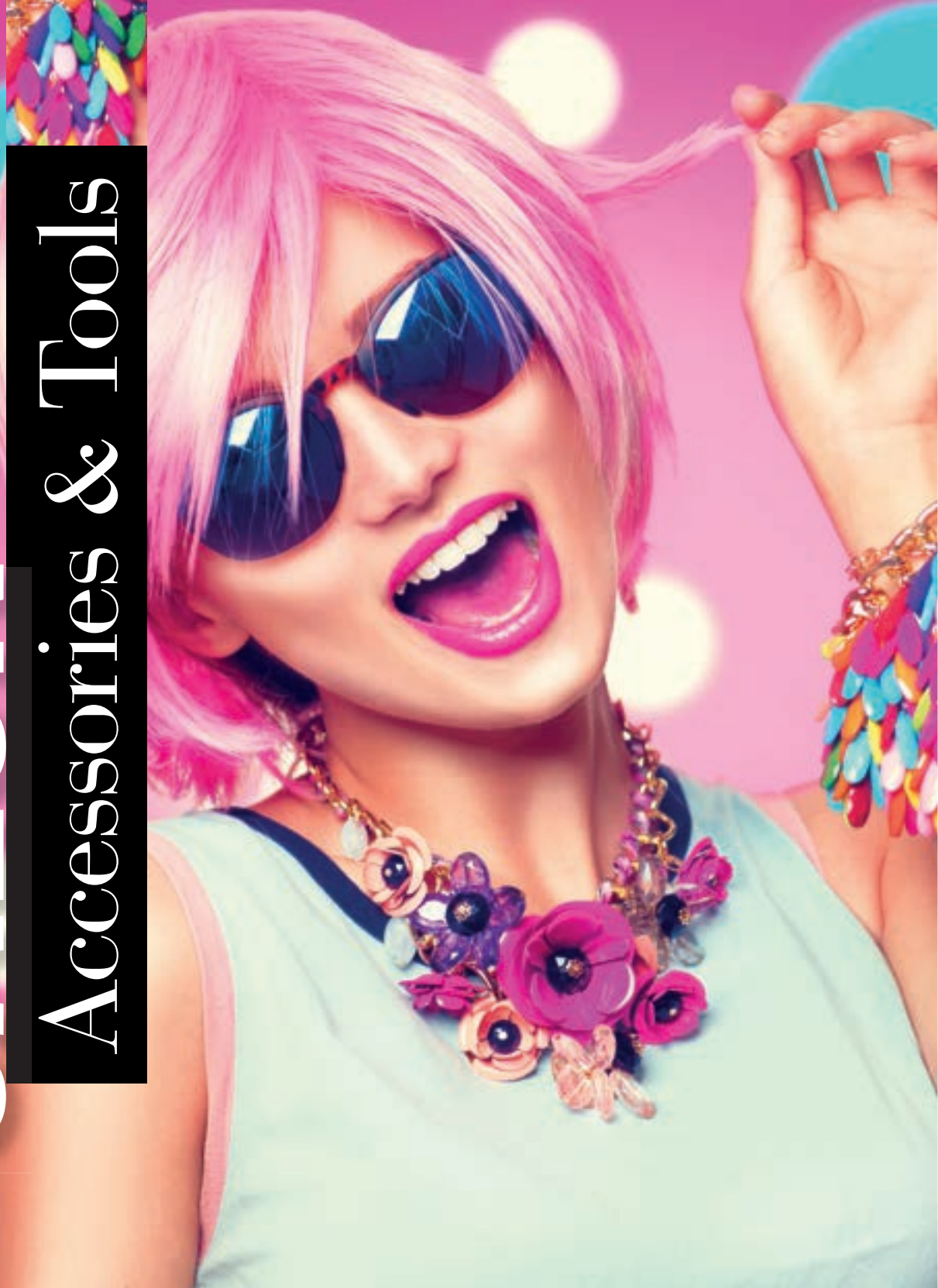


**CANDY POP LAQ X GEL POLISH COLLECTION**

**CUPCAKE LACGEL PLUS GEL POLISH COLLECTION**







### SILICONE MAT

■ Silicone mat for your workstation

This durable, water repellent and non-matting product is suitable for replacing regular and paper towels during salon work. Easy to clean and sanitize. You can put paints and colored gels directly onto the mat.

WASHABLE,  
SANITIZABLE

PURPLE

PC PNSE639

CLEAR

PC PNSE640



### SILICONE NAIL ART PAD

■ Transparent, mini silicone pad

Excellent table surface protector to put under gel jars. This transparent pad is perfect for mixing colors, while the softness of the silicone will prevent decor stones from bouncing off. It's easy to clean, durable and water repellent.

2 PCS / PACKAGE PNSE691



### ARM AND ELBOW REST

■ Multifunctional arm rest made of plastic

This durable hand rest provides comfortable support for the hand. The non-slip and water repellent surface makes it easy to clean and sanitize.

PC PNSE641



### HAND REST - SOFT

■ Hand rest made of memory foam with a terrycloth cover

This hand rest provides stable support for the hand. The cover is removable and machine-washable.

PC PNB0018



MEMORY  
FOAM

COVER IS  
MACHINE-  
WASHABLE





DUST MAGNET BRUSH

■ Double-sided dust removal brush with dust magnet effect

Special double-sided dust removal brush with dust magnet effect. The unique design and bristles help remove all the dust particles trapped on the nail bed. It contains roughly 3,000 silicone bristles which attract the dust particles like a magnet. For dry and wet use. Easy to clean and sanitize.

PC PNSE649



UNICORN BRUSH

■ Dusting brush with a unicorn shaped handle

The extra soft and densely packed bristles of this brush help you to completely remove dust particles from the nail after filing. This brush is gentle on the skin to make this dust-off phase a more pleasant experience for your clients. It is perfectly suitable for a Russian manicure to dust off sensitive skin and the area around the side walls.

GOLD PC PNSE709  
PINK PC PNSE710

GALAXY PC PNSE735



MARBLE DEMO PLATE

This is a handy accessory for your salon, allowing you to create artistic compositions and take amazing photos. These marbled plates are available in various colors, so you can select the most suitable background for your specific designs.

WHITE PC PNSE726  
PURPLE PC PNSE727

GREY PC PNSE728

CUTICLE PUSHER & SCRAPER 2 IN 1 – EASY

■ Plastic pusher/scraper tool with a rubber covered pusher edge

Suitable for prep work before nail polish or gel polish application. Gently push back the cuticle with the rubbery edge, then use the flattened scraper end to clean the nail plate.

PC PNSE6130



PEDICURE FILE – CLASSIC

■ Heel file with a handle, made of plastic

It is recommended for the finishing stages of a pedicure to smooth out the skin.

PC PNPE020



TOE SEPARATOR

■ Toe separator tool made of polyfoam

This handy tool gently keeps toes separate during gel polish or nail polish application and the treatment of the heel. It facilitates pedicure, gel polish or nail polish application steps at home or in the salon. This toe separator is made of double-layered polyfoam and it is also recommended for sensitive skin.

2 PCS / PACKAGE PNSE513



SANITIZABLE SILICONE TOE SEPARATOR

■ Reusable, sanitizable toe separator in Perfect Purple

It is made of silicone, so it is sanitizable.

2 PCS / PACKAGE PNSE721



PEDICURE SLIPPERS - POLYFOAM

■ Slippers for pedicure clients for multiple use

These slippers are made of soft, thin, washable, sanitizable and highly durable polyfoam.

2 PCS / PACKAGE PNPE010



# Nail Art Accessories



## CAT EYE LACGEL MAGNET – GREY

■ Double-sided magnet for magnetizable gel polish

The grains in Cat Eye LacGels react to the magnet placed over the nail, revealing a lighter color design on the nail. One side is suitable for creating straight lines, the other is for creating arched and wavy lines.

PC PNSE703



## 5D MAGIC CAT EYE LACGEL MAGNET - BLACK

■ Double-sided magnet for extra-pigmented magnetizable lacgels

The marked end of the magnet pulls the color grains together, whereas the unmarked end of the magnet spreads the particles. You can create a circle and several other shapes with this special magnet. This magnet is specifically recommended for 9D Cat Eye lacgels.

PC PNSE708



## CAT EYE DECOR MAGNET GEL POLISH PEN

■ Double-sided magnet pen

The grains in magnetic gel polish react to the magnet placed over the nail, revealing the design in a lighter color. One end of the pen creates a flower pattern, while the other end is suitable for creating parallel lines in the desired way.

PC PNSE716

## COLOR CHART WHEEL

■ Color chart wheel with 20 nail art tips arranged like the petals of a daisy

Suitable for displaying nail polish and gel polish colors, professional colored materials, and for demonstrating nail art techniques.

CLEAR

PC PNSE507

NATURAL

PC PNSE508

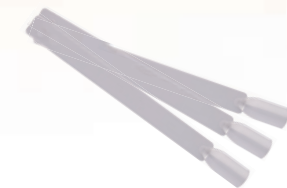


## COLOR CHART STICKS

■ Transparent color chart sticks

These are suitable for displaying nail polish, gel polish and various builder products, as well as nail art techniques.

10 PCS / PACK PNSE597



## COLOR CHART STICKS FAN WITH RING

■ Transparent color chart sticks with 30 nail art tips

30 color chart sticks arranged in a fan shape with a latched metallic ring.

30 STICKS / FAN PNSE598

EXPANDABLE



## COLOR CHART SPIRAL DISPLAY

■ Transparent color chart sticks arranged in a spiral

Display stand for arranging 120 color chart sticks in a spiral form. The spiral display features a stylish crystal at the top.  
HEIGHT: 35cm

120 STICKS / STAND PNSE642

EXPANDABLE







### SAMPLE TIP

■ Sample tip ring

Suitable for displaying nail polish and gel polish colors. The rings can easily be placed onto gel polish bottles for display.

CLEAR

50 PCS / PACK PNTGY003

WHITE

50 PCS / PACK PNTGY004



### MAGNETIC PALETTE RING

■ Mixing palette ring for gel painting

This mini palette is ideal during gel painting to quickly mix colors and store them until you finish the design. It is a practical solution, since your color mixes are all together and easy to reach.

PC PNSE596



### ORANGE WOOD STICK

■ Double-ended orange wood stick

The slanted end is suitable for pushing back the cuticle, while the pointed end allows for an easy positioning of nail art bits and pieces. It is also suitable for wiping any unwanted gel off the side walls, and for painting the smile line and mixing gel products.

LENGTH: 18cm

PC PNSE040



OUR  
INSTRUCTORS'  
FAVORITE

### NAIL ART TIP #03

■ Nail art tips in size #03

Suitable for displaying nail polish and gel polish colors, professional colored materials, and for demonstrating nail art techniques.

WHITE

50 PCS / PACK PNDT001

BLACK

50 PCS / PACK PNDT002

NUDE

50 PCS / PACK PNDT003

## Holders & Dispensers

### NAIL BRUSH CASE

■ Brush case with a zipper

Ideal for all brush sizes and holds up to 15 brushes. It can be propped up, so it is not only ideal as a travel case, it comes in handy during your salon work as well.

PC PNSE722



### NAIL BRUSH HOLDER

■ Cylindrical shaped brush holder with two snap-fasteners on the side

When opened, it serves as a convenient brush holder for your workstation. When closed, it is ideal for keeping your brushes and tools safe when you are on the move. Recommended for both professional and at home use.

PC PNSE723



### C-CURVE - DIAMOND STICK

■ Exclusive looking C-Curve - Diamond Stick

The two ends of the sticks are of different sizes, so the three sticks can be used to create six different curve sizes at the same time.

PC PNSE631





## NAIL POOL FOR DIPPING

- Dipping pool for quick and easy application of color acrylic powders

The finger guide rail allows the whole surface of the nail covered with nail hardener gel, to be dipped in the acrylic powder simply and smoothly. The special design drastically reduces the time needed for creating French ends. Use colored acrylic powders to create the desired colored nail design.

PC PNSE647



FOR STUDENTS

## MANICURE BOWL

- Soaking bowl made of plastic

Plastic manicure bowl of ergonomic design which conforms to the fingers perfectly, providing the hand with comfortable support.

PC PNSE638



## DAPPEN DISH - GLASS

- Dappen dish made of glass with a metallic lid

Ideal for rationing and applying the liquid ingredients during work. The metallic lid prevents the evaporation of the liquid. Easy to clean.

PC PNSE643

TEMPERATURE-COMPENSATING PORCELAIN



## DAPPEN DISH - PORCELAIN

- Dappen dish made of porcelain with a cork stopper

Liquid container with heat distributing double thickness walls preventing the premature setting of acrylic in warmer and a delayed setting in colder ambient temperatures. The container is corked for an odor-tight sealing. Easy to clean.

PC PNSE218

## PUMP DISPENSER BOTTLE

- Transparent pump dispenser bottle made of plastic

150ml pump dispenser suitable for the easy storing and economic dispensing of various liquids. The open and close lid ensures that your liquid is safely stored, without leaking or evaporating.

**PLEASE NOTE:** Do not use the Pump Dispenser Bottle to store liquids that contains acetone, because these will damage the bottle.

PC PNSE718



## TIP BOX

- Tip storage box made of plastic

This clear box has 12 slots to properly organize and store nail tips of various sizes.

PC PNSE540



## C-CURVE PLASTIC PINCHING TOOL

- Pinching tool made of plastic

Suitable for keeping the desired C-curve of the pinched nail enhancement. The C-curve is retained during the curing process of gel, acrylic and acrylgel as well. The strength of the pinching tool can be set by the included rubber bands.

PC PNSE720







## NAIL PADS HOLDER

■ Nail Pads storage box made of plastic

Plastic holder with two clear chambers with lid, designed for Nail Pads.  
**WIDTH:** 12cm | **HEIGHT:** 7.5cm | **DEPTH:** 6.5cm

**PC** PNSE717



## NAIL PADS

■ Lint-free nail pads made of fabric

Absolutely lint-free, strong, durable and tear-free nail pads – perfect for removing the sticky residue from nails and cleaning your brushes. They efficiently remove dust particles and leave no lint behind.

**400 PCS / PACKAGE** PNSE304



## NAIL WIPES

■ Lint-free, perforated nail wipes made of paper

Lint-free, perforated, extra absorbent nail wipes made of paper – suitable for removing the sticky residue from nails and removing nail polish.

**PREMIUM**

**100 PCS** PNSE301

**500 PCS** PNSE303

**BASIC**

**500 PCS** PNSE302



## NAIL WIPES

■ Lint-free, perforated nail wipes made of paper

Absolutely lint-free, strong, durable and tear-free nail pads – perfect for removing the sticky residue from nails and cleaning your brushes. They efficiently remove dust particles and leave no lint behind.

**100 PCS** PNSE305

**NEW**

## TUBE SQUEEZER

■ Plastic tube squeezer with metallic rollers

This tool helps you to „forward“ the remaining product at the bottom of the AcrylGel Prime tube, and you can squeeze out the whole content of the tube, leaving no product to waste. The rollers are made of aluminum, so this durable tool will last you a long time. Using this tool also helps to avoid getting air bubbles in the product.

**PC** PNDNY045



## HOLOGRAPHIC STAMPING PLATES CASE

■ Stamping Plate Organizer

Holographic, soft leather effect nail plate holder. Suitable for 6x12 cm printing plates, the 16 compartments allow you to keep your plates scratch-free. User friendly design.

**PC** PNSE734



**NEW**

## JEWELRY BOX-ROUND

■ Jewelry Box-Round-Small-White

Plastic, round rhinestone holder, the ideal solution for storing your nail decoration stones and jewelry. 12 compartments to keep your decorations neatly organized.

**PC** PNSE738



**NEW**

# Promo Products

## APRONS WITH LOGO

Recommended for nail techs and salon work

Machine-washable aprons with a neck loop and ties to go around the waist. The black apron is made of water-repellent material and it is somewhat shorter, down to the mid-thigh area. The pink and white aprons are made of cotton, and they are both knee-length.

BLACK: 59 x 70cm | PINK: 63 x 82cm | WHITE: 63 x 82cm

BLACK

PC PNRE55

WHITE

PC PNRE64

PINK

PC PNRE56



## T-SHIRTS WITH LOGO

Cotton T-shirts in purple, with logo

These T-shirts are ideal for salon work. They are slim fit, ensuring stylish elegance and comfortable wear.



SLIM-FIT  
DESIGN

LOGO WITH  
RHINESTONES

S PNRE145  
M PNRE146  
L PNRE147

LOGO WITH  
METALLIC PRINT

S PNRE166  
M PNRE167  
L PNRE168

## NECK STRAP WITH LOGO

PC PNRE45



## PEN WITH LOGO

PC PNRE12



## LIGHTER WITH LOGO

PC PNRE47







## PAPER BAG

■ Environmentally friendly paper bag

White paper bag with the Perfect Nails brand name and logo. Suitable for storing nail files, brushes and nail art tools.

**WIDTH:** 11.5cm | **HEIGHT:** 23cm | **DEPTH:** 5.5cm

**PC** PNRE170



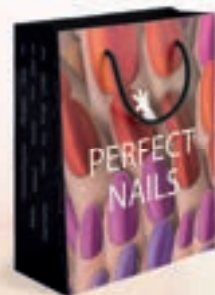
## PAPER BAG WITH FLAT HANDLES

■ Environmentally friendly paper bag in purple

Our reusable and recyclable paper bags promote Perfect sustainability. If you leave our stores with a paper bag full of goodies, you have already made a difference for the environment. When you are done using the bag, make sure to place it into the appropriate recycle bin.

**WIDTH:** 18cm | **HEIGHT:** 22cm | **DEPTH:** 8cm

**PC** PNRE149



## PAPER BAG WITH ROPE HANDLES

■ Decorative paper bag with a shiny finish

This decorative bag is ideal as a gift bag when you want to surprise someone with Perfect Nails products. No extra gift wrapping needed.

**WIDTH:** 27cm | **HEIGHT:** 35cm | **DEPTH:** 12cm

**PC** PNRE66



## FOLDER WITH LOGO

■ Size A4 paper folder

This premium quality, sturdy paper folder has a matte finish and features a colorful nails design and the Perfect Nails logo. It is an ideal solution for storing certificates.

**WIDTH:** 210mm | **HEIGHT:** 297mm

**PC** PNRE46



## PERFECT NAILS CATALOG

■ Annually published product catalog

Our complimentary catalog is published annually and it encompasses the current Perfect Nails product range. The catalog lists product features and descriptions, and contains comparison charts and "how to use" sections.

**PC** PNRE190



## TOWEL WITH LOGO

■ 30 x 50cm towel made of white terrycloth

This terrycloth towel is a great alternative to paper table mats on your workstation during salon work. It is also recommended for pedicure.

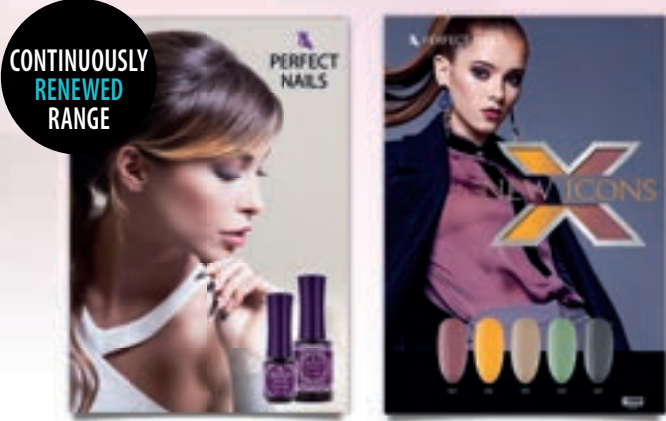
**PC** PNRE62



## WHITE TAPE WITH LOGO

**PC** PNRE2

# In-store Displays & Posters



PC PNRE183

## PERFECT NAILS POSTER

■ Size A2 posters

Continuously renewed range of artistic photos on premium paper.

**WIDTH:** 420mm | **HEIGHT:** 594mm

PERFECT GIRL

PC PNRE144

NEW ICONS

PC PNRE184

PC PNRE182



## COUNTERTOP DISPLAY FOR GEL POLISH

■ Display stand with 4 shelves and multiple slots for gel polish bottles

This countertop display offers a neat way to organize and showcase the Perfect Nails gel polish range. If you take 15ml bottles, the depth of the shelves allows maximum 3 of them in a row. The clear dividers can be moved horizontally, so 4ml, 8ml and 15ml bottles equally fit snugly into the slots.

**WIDTH:** 31cm | **HEIGHT:** 63cm | **DEPTH:** 19cm

PC PNSE404



## COUNTERTOP DISPLAY FOR NAIL FILES

■ Display stand for nail files made of plastic with 13 vertical slots

This countertop display is ideal for organizing and showcasing nail files and buffers offered by Perfect Nails. Although it does not take up a lot of space on the counter, it is definitely an eye-catching display.

**WIDTH:** 10cm | **HEIGHT:** 57cm | **DEPTH:** 11cm | **BASE:** 22 x 19cm

PC PNSE704





# PERFECT BEAUTY SHOP



THE IDEAL RETAIL FRANCHISE CONCEPT  
FOR NAIL TECH SUPPLIES THAT IS EASILY  
ADAPTABLE FOR VARIOUS LOCATIONS  
WORLDWIDE.

Our mission is to provide all-around assistance for our franchise partners, so they can focus 100% on their clients and revenue growth every day.

We aim to form relationships with such talented and ambitious entrepreneur partners, who can embrace the highest standards, expectations and values to contribute to the brand's overall success.



DISTRIBUTOR WANTED!

Go to our website or simply scan the QR Code with your smartphone.  
[www.perfectnailscompany.com/nail-products-whole-sale](http://www.perfectnailscompany.com/nail-products-whole-sale)

## Training for Nail Technicians



### PERFECT DAY WORLDWIDE QUICK, EASY, DAZZLING DESIGNS

Our training courses feature experienced salon nail technicians sharing all their knowledge with their young, less experienced colleagues eager to develop and get better. These young nail technicians will get information and useful tips regarding the use the materials, mainly our new products, from the best sources! In 10+ countries of Europe and in 20+ cities, nail tech professionals can gather to share experiences and learn about new trends.



HUNGARY



YOUR DISTRIBUTOR



PNRE190



This catalog is not to be distributed among residential consumers. We do not assume any liability for any printing errors.

© 1992 - 2022 Copyright | Perfect Nails Kft. | All rights reserved. | [perfectnailscompany.com](https://perfectnailscompany.com)